

MEADOWSLEA ANGUS SPRING BULL SALE



MEADOWSLEA
ANGUS & SHEEP GENETICS



27 2-year bulls
75 yearling bulls

On-Farm Helmsman Auction
Friday 4th October 2024, 1pm

and

Online at

www.meadowslea.co.nz

from Sunday Sept 29th



Register early online to qualify for
deferred payment option

NZ BREED TRAIT LEADERS FOR MATERNAL AND FERTILITY TRAITS - WITH LONGEVITY TO 14 YRS OF AGE

These two legendary senior sires have had a profound impact on the Meadowslea herd. They are both NZ Trait leaders for the important fertility and maternal traits of either short days to calving, short gestation length, or milk. You will find them featuring somewhere in the pedigrees of almost every bull in this catalogue, ensuring industry-leading fertility, maternal excellence, and incredible longevity.



MEADOWSLEA F540



TURIHAUA CRUMP E5

FRIDAY 4th OCTOBER 2024, 1pm, Mt Cook Road, Fairlie

VENDOR:

Meadowslea Genetics Ltd

Phone: 03 685 8027
Mobile: 027 2299 760
Email: giddingsfamily@xtra.co.nz

BOOKING COMPANY

Hazlett:

Callum Dunnett 027 462 0125
Madison Taylor 021 656 851
Hamish Zuppich 027 403 3025
Snow Buckley 027 561 4652
Don Borlase (Dairy) 027 561 4025
Dean Cox (Dairy) 027 561 5007
Greg Shearer (Fairlie) 027 476 6769
George Mannering 027 462 0182
Guy Martin 027 538 3741



PARTICIPATING COMPANIES:

PGG Wrightson

John McCone 027 229 9375
Simon Eddington 027 590 8612
Callum McDonald 027 433 6443
Joe Higgins 027 431 4041
Greg Uren 027 431 4051
Bruce Dunbar 027 595 6473
Barry Fox (Dairy) 027 439 3317

Carrfields Livestock:

Todd Wells Southland 027 236 7367
Matt McBain Southland 027 306 5807

Rural Livestock:

Anthony Cox Stud Stock 0272 083 071
Donald Cooke 0274 730 854
John Harrison 0272 262 964
Quinten Botha South Canterbury 0274 730 885
George Coull 0276 855 702
Aaron McCall 027 685 5702

NZ Farmers Livestock

Regan Laughton 027 440 6722

TB Status – C10

ATTENTION ALL BUYERS:

Can you please ensure you bring your NAIT Number to the sale.



MEADOWSLEA SPRING BULL SALE



Friday 4th October 2024 1pm

**Online and On-Farm,
State Highway 8, 5km west of Fairlie
Online Bidding opens with
Video Release Sunday 29th Sept, 7pm**

Sale Format

The sale will be conducted as a Helmsman-style auction, meaning that all lots are for sale simultaneously. This is to allow for the participation of those in attendance, as well as those online. The sale will be hosted on our own yourbid platform and accessed through our website www.meadowslea.co.nz. Prior to the sale, all lots will be filmed and available for viewing up until sale day on the Meadowslea website.

Bulls are available for viewing in the paddock anytime – just call 027 229 9760 to arrange a time.

Registration for those in attendance will be at the on-farm office, where a copy of the conditions of sale will be posted.

Registration for those online will be through the Meadowslea website, where the conditions of sale will also be available.

Buyers will receive a buyer number as they register which will accompany each bid. Buyers registering online will receive a buyer number when they register for the sale which will automatically accompany each bid they place, whether they do so at home on their computer, or through their smart phone while in attendance. Those in attendance may also bid by writing on the supplied bidding cards and handing them in to the on-farm office staff. All live bids and all lots will be visible at all times, both online and on a big screen on-farm.

Online registration is available now and we encourage everyone to visit our website www.meadowslea.co.nz, to register, and then place practice bids on the demonstration lots on the auction page.

Online videos of each lot with accompanying commentary will be released both on our website and on facebook on Sunday Sept 29th at 7pm. This video will include footage of every bull in the

catalogue with comments and background information from the Meadowslea team and will be available for viewing right up until the conclusion of the sale.

Online bidding will be open from 7pm on Sunday Sept 29th until the conclusion of the sale.

On Oct 4th, Sale Day, the on-farm registration and bidding will open at 11am. **Livestreaming with interactive viewing will commence at 12.30 pm** with a walk through of all the pens, with commentary from the vendors and genetic specialists. Requests to review particular bulls can be made through the web-site chat box or by telephone or text to the vendors or stock agents in attendance. This will continue throughout until the conclusion of the sale.

A live screen on the website will show all lots alongside their current prices and the buyer number of the bidder who holds that lot. On-farm attendees will be able to view on a big screen on site.

Bids will be displayed on a computer or smart phone screen in the following colours

Example:

\$2500 Displayed in **Red** denotes the Vendors reserve and indicates there has been no bid

\$3000 Displayed in **Blue** means an active bid has been received

\$3500 A new Bid has been Received within the last 2 minutes on this lot

\$3500 The holder of the leading bid will have the lot number highlighted in Green on their computer or their smart phone when logged in.

The sale will run until 2pm on Oct 4th. After this time the sale will conclude once there has been a period of at least 2 minutes without any bid being received on any lot. If another bid is placed on any lot during the 2-minute period, then time is extended and bids can be received on all lots for a further 2 minutes. This process will be repeated until a clear 2 minutes passes without any bids on any lot at which time the sale will conclude.

Final Time will be called clearly by the commentary team who will use their discretion to ensure all bidders are satisfied.

All updates will be posted on our website, as will an up-to-date version of this document.

Rebate Purchasing Commission. 6% purchasing rebate commission will be paid to all nominated buying companies or independent agents introducing clients prior to the sale.

FOREWORD

Meadowslea Angus Stud was established in 1985 with the purchase of capital stock females from Turihaua Station, Gisborne.

The herd today comprises 550 cows run on tussock country west of Fairlie at an altitude of 1500 to 2500 feet. The cows are run entirely under commercial conditions with all heifers calving as 2-year-olds or they are culled. Strong emphasis is placed on cow fertility and ease of calving with any dry cows culled.

Selection criteria is for easy-fleshing, moderate-framed cattle with plenty of meat and adequate fat cover, that will shift and perform in the South Island hill country. Sires used are all NZ-bred, with real emphasis placed on structural soundness, longevity, and fat cover. Over the last 13 years our stud cows have grazed next door on “Berkley Downs” native tussock blocks, and this has further tested their hardiness and constitution.

Sale bulls have spent 120 days on winter feed. The yearlings have been on fodderbeet where they have gained over 1kg / day while the 2-year bulls cruised through the winter on kale. Both mobs were shifted onto grass in the second week of September.

In 2023 we had a 98% conception rate across heifers and mixed aged cows. With very dry conditions we pulled the bulls out and preg tested a bit early thinking we might get a few extra empties processed, but that didn't happen! We believe it is the strong focus that we place on the maternal and fertility traits that is driving these outstanding results. Furthermore, the performance of our young R2-year heifers is leading the progress within the herd, and you will note that many of the bulls on offer are bred from these outstanding young cattle – either out of the 2-year heifers or bred by yearling bulls.

Strong maternal and fertility traits are the main driver of profitability in any beef herd, and they continue to be the major selection criteria in our breeding programme.

We always keep a selection of very good 2-year-old Angus bulls for this spring sale and this year is no exception, with some particularly meaty, easy-doing bulls on offer, many suited to heifer mating.

The yearlings include the first 10 sons to be offered from the \$81,000 Kincardine Rainstorme R25. These are very exciting prospects and are all heifer mating specialists with genomically enhanced EBV's. Rainstorme has bred exceptionally well and his progeny have the potential to be game-changers for the beef cow herd in NZ. He has exceptional calving ease coupled with very strong early growth while maintaining an unmatched efficient moderate cow size that the industry requires for sustainable and profitable hill country beef production. We have catalogued some top yearlings from all our major bloodlines as well as a good selection of bulls for our Dairy clients.

Meadowslea is a closed herd. All appropriate steps are being taken to ensure biosecurity is maintained at all times for ourselves and our clients.

All bulls tested clear and vaccinated for BVD. Scrotal contents and prepuce palpated with no abnormalities found.

We wish you well with your purchases and as always stand behind them 100%.

Deferred payment option is available – feel free to contact the vendors to discuss.

David and George Giddings

Disclaimer:

The BREEDPLAN Estimated Breeding Values (EBVs) contained within this sale catalogue were compiled by the Agricultural Business Research Institute (ABRI) from the data supplied by breeders. Neither Angus NZ nor ABRI oversee or audit the collection of this data.

Structural Assessment

The two-year bulls have undergone independent structural assessment by Bill Austin using the Australasian Beef Class system.

Results will be published online at
www.meadowslea.co.nz



17th September 2024

On the 17th September 2024

I palpated the scrotal contents and prepuce of the bulls.

There were no abnormalities found.

The scrotal circumferences were measured and recorded.

Glenda Kellahan (B.V.Sc.)

Accounts Office

Ph: 03 687 9381

Fax: 03 687 9380

Email: office@orangivet.co.nz

PO Box 4013,

Highfield, Timaru

Geraldine

Veterinary Centre

G.K. Kellahan B.V.Sc.

A.D. McCullough B.V.Sc

27 Wilson Street, Geraldine

Ph: 03 693 1163

Fax: 03 693 1161

Fairlie

Veterinary Centre

Allandale Road, Fairlie

PO Box 26, Fairlie

Ph: 03 685 8407

Fax: 03 685 8904

Highfield

Veterinary Centre

B.M. Gregor B.V.Sc.

G.A. Gregor V.S.

S.R. Newmarch B.Sc, B.V.Sc.

265 Otipua Road, Timaru

PO Box 4013, Highfield

Timaru

Ph: 03 684 5646

Fax: 03 688 4397

Aorangi Vets - Fairlie

"Your Animals Our Expertise"

Your first choice of vets in the Mackenzie District for all
your animal health requirements.

Phone 03 685-8407

ANGUS NZ BREED AVERAGE EBVS FOR 2022 BORN CALVES

CED	DTRS	GL	BW	200	400	600	MCW	Milk
+1.6	+0.9	-4.0	+4.3	+42	+78	+100	+91	+14

SS	DC	CW	EMA	Rib Fat	Rump	RBV (%)	IMF%
+2.0	-4.2	+48	+3.2	+1.1	+1.1	+0.4	+0.9

EBV tables in this catalogue represent the top 25% and 50% for each trait except where Mature cow weight is shaded it indicates desirable for under 600 Day weight and exceptional for under 400 Day weight.

INDEXES
SR
+\$ 113
HD
+\$ 105

Downlands Deer & **STUDSTOCK**

DEDICATED TO WORKING AS A TEAM



CONTACT: KRIS ORANGE
TELEPHONE 03 693 8013
MOBILE 021 322 622

NZ Stud Stock Specialists



Insurance

Livestock

Agronomy

Funding

Procurement

We are a business built on the belief that people come first

Our commitment to you is to provide quality advice and to optimise value for you at every opportunity. **Give us a call and we'll prove it.**

-
- › Hamish Zuppicich - 027 403 3025
 - › Wayne Andrews - 027 484 8232
 - › Callum Dunnett - 027 462 0126
 - › Snow Buckley - 027 561 4652
 - › Greg Shearer - 027 476 6769
 - › Travis Dalzell - 027 202 0196



SEPTEMBER 2024 TRANSTASMAN ANGUS CATTLE EVALUATION PERCENTILE BAND FOR ALL 2022 BORN CALVES

	Calv-Ease				Birth				Growth				Fertility				Carcass				Index						
	Dir	Dtrs	GL	Bwt	200	400	600	Mwt	Milk	SS	DC	Cwt	EMA	Rib	P8	RBV	IMF	SRI	API	HDT							
	%				kg				kg				cm				mm				%				\$		
Top 1%	+10.1	+8.5	-9.3	+0.0	+63	+111	+147	+150	+27	+4.4	-7.8	+85	+10.9	+5.1	+6.5	+1.9	+4.0	+185	+205	+144							
Top 5%	+8.2	+6.8	-7.5	+1.3	+56	+100	+131	+130	+23	+3.6	-6.7	+74	+8.3	+3.8	+4.7	+1.4	+3.0	+163	+177	+135							
Top 10%	+7.1	+5.8	-6.6	+2.0	+53	+95	+124	+121	+21	+3.2	-6.0	+68	+7.0	+3.1	+3.8	+1.1	+2.5	+151	+162	+129							
Top 20%	+5.5	+4.3	-5.7	+2.8	+49	+88	+116	+110	+18	+2.7	-5.3	+61	+5.5	+2.4	+2.8	+0.9	+1.9	+137	+144	+122							
Top 30%	+4.2	+3.1	-5.0	+3.4	+46	+84	+110	+103	+17	+2.5	-4.9	+56	+4.6	+1.9	+2.1	+0.7	+1.5	+127	+132	+117							
Top 40%	+3.1	+2.1	-4.4	+3.9	+43	+80	+105	+96	+16	+2.2	-4.5	+52	+3.8	+1.5	+1.6	+0.5	+1.2	+119	+121	+112							
Top 50%	+2.0	+1.1	-3.9	+4.3	+41	+77	+100	+91	+14	+2.0	-4.2	+48	+3.0	+1.1	+1.1	+0.4	+0.9	+112	+112	+107							
Top 60%	+0.8	+0.1	-3.4	+4.7	+39	+74	+96	+85	+13	+1.8	-3.8	+44	+2.3	+0.7	+0.6	+0.3	+0.6	+105	+102	+101							
Top 70%	-0.4	-1.0	-2.9	+5.2	+37	+71	+91	+79	+12	+1.5	-3.5	+40	+1.6	+0.3	+0.1	+0.1	+0.3	+97	+91	+95							
Top 80%	-2.0	-2.3	-2.2	+5.7	+35	+67	+85	+71	+10	+1.3	-3.0	+36	+0.7	-0.2	-0.6	-0.1	-0.1	+89	+79	+88							
Top 90%	-4.5	-4.2	-1.3	+6.5	+31	+61	+77	+60	+8	+0.8	-2.4	+30	-0.5	-1.0	-1.7	-0.3	-0.6	+76	+61	+78							
Top 95%	-6.7	-6.0	-0.5	+7.1	+28	+56	+70	+51	+6	+0.4	-1.9	+24	-1.5	-1.7	-2.5	-0.6	-1.0	+64	+45	+67							
Top 99%	-12.2	-10.2	+1.3	+8.4	+22	+46	+56	+32	+3	-0.3	-0.7	+11	-3.6	-3.1	-4.3	-1.1	-1.9	+42	+16	+45							

Based on the results of the August 2024 TACE analysis

▲ Negative (lower) values more favourable

▲ Negative (lower) values more favourable

2 YEAR OLD ANGUS BULLS

Lot: 1 MEADOWSLEA T206 ^{PV}

Birth Date: 18/09/22 ID No: 19134022206

KAHARAU ATLANTIC 454 ^{SV}

KAHARAU OLYMPIC Q327 ^{SV}

KAHARAU 1058

RATANUI LAD 21

MEADOWSLEA L201

MEADOWSLEA G814

INDEXES	
SR	HD
+\$115	+\$93

SEPTEMBER 2024 TRANSTASMAN ANGUS CATTLE EVALUATION

CED	DTRS	GL	BW	200	400	600	MCW	Milk
+0.9	+1.9	-3.6	+4.9	+37	+65	+85	+100	+7
54%	40%	82%	76%	72%	72%	75%	69%	54%
SS	DC	CW	EMA	Rib Fat	Rump	RBV %	IMF %	
+3.1	-5.3	+31	+1.0	+2.6	+2.5	+0.0	+0.5	
73%	38%	61%	56%	59%	59%	55%	56%	

Comments: We start this year's offering with a powerful son of the \$106,000 Kaharau Olympic. He shows all the strength and bone we get from that Kaharau pedigree. As a 2-year heifer his mother bred a stud bull sold to Picton Park Angus and she has had good calves every year. T 206 is a moderate birthweight bull with good fertility and easy fleshing. His scrotal size is in the top 10% of the breed with good days to calving and plenty of fat, plus a great actual IMF scan. He was the heaviest calf weaned at Meadowslea in 2023, at 400 days was 6th heaviest with the second-best rib fat measurement, and is now well over 800kg. He has a tremendous top, wonderful hindquarter, and powerful foot and bone.

Purchaser:

Price: \$

Lot: 2 MEADOWSLEA T433 ^{PV}

Birth Date: 04/10/22 ID No: 19134022433

MEADOWSLEA M429

MEADOWSLEA R646 ^{PV}

MEADOWSLEA M542

MEADOWSLEA L226 ^{SV}

MEADOWSLEA P524 ^{SV}

MEADOWSLEA M1039

INDEXES	
SR	HD
+\$111	+\$93

SEPTEMBER 2024 TRANSTASMAN ANGUS CATTLE EVALUATION

CED	DTRS	GL	BW	200	400	600	MCW	Milk
-1.9	-3.1	-2.7	+6.0	+43	+86	+118	+122	+12
53%	42%	60%	75%	71%	72%	74%	69%	57%
SS	DC	CW	EMA	Rib Fat	Rump	RBV %	IMF %	
+2.9	-5.1	+47	-2.8	+1.9	+2.6	+0.0	-0.1	
73%	39%	61%	56%	59%	59%	54%	58%	

Comments: Another similarly powerful bull. Sire R646 is breeding very well as you'll see in the yearling catalogue and will have some top 2-year old sons offered in 2025. This bull has a powerful pedigree going back to Crump, F540, Braveheart and the \$100,000 Rangataria 13-38. Exceptional growth here with good fertility, great length, terrific width across the top, and powerful foot and bone again. Will make a terrific hill country herd sire. Good fat EBVs and another strong actual fat and IMF scanner.

Purchaser:

Price: \$

2 YEAR OLD ANGUS BULLS

Lot: 3 MEADOWSLEA T400 ^{PV}

Birth Date: 30/09/22 ID No: 19134022400

TURIHAUA CRUMP E5 (ET) ^{SV}

MEADOWSLEA N166 ^{SV}

MEADOWSLEA G922 ^{SV}

MEADOWSLEA M444

MEADOWSLEA P636 ^{SV}

MEADOWSLEA J555

INDEXES	
SR	HD
+\$116	+\$84

SEPTEMBER 2024 TRANSTASMAN ANGUS CATTLE EVALUATION

CED	DTRS	GL	BW	200	400	600	MCW	Milk
-1.8	+2.8	-4.7	+4.7	+37	+75	+93	+83	+18
56%	46%	65%	76%	72%	73%	75%	70%	61%
SS	DC	CW	EMA	Rib Fat	Rump	RBY %	IMF %	
+1.8	-5.3	+39	+3.4	+3.0	+2.1	+0.2	+0.2	
74%	46%	63%	60%	62%	62%	58%	62%	

Comments: Power and strength once again, this time in a son of N166 with the classic Crump x F540 cross in his background, and with shots of Rangatira 13-38 and Glanworth 0816 too. Another powerful bull with a strong top, very good backend, strength of head and bone to round out this pen. Top actual scan - his EMA, fats, and IMF were right up there. His growth is strong while the all-important days to calving is in the top 15% and rib fat in the top 10% of the Angus breed.

Purchaser:

Price: \$

Lot: 4 MEADOWSLEA T193 ^{SV}

Birth Date: 16/09/22 ID No: 19134022193

TURIROA MAVERICK L945 (ET)

RANGATIRA REBEL 19-798 ^{SV}

RANGATIRA 15-134

GLANWORTH WAIGROUP 0816 ^{SV}

MEADOWSLEA H191

MEADOWSLEA D248

INDEXES	
SR	HD
+\$92	+\$82

SEPTEMBER 2024 TRANSTASMAN ANGUS CATTLE EVALUATION

CED	DTRS	GL	BW	200	400	600	MCW	Milk
-2.3	-3.9	-4.3	+6.0	+38	+73	+97	+97	+10
55%	44%	65%	76%	72%	73%	75%	69%	61%
SS	DC	CW	EMA	Rib Fat	Rump	RBY %	IMF %	
+1.0	-4.0	+41	+0.7	+1.4	+0.8	+0.5	-0.8	
75%	41%	62%	58%	61%	60%	56%	61%	

Comments: A powerful, easy-doing bull by Rangatira Rebel. Out of a great old cow by the Glanworth 0816 bull who bred a top bull sold in 2023 to Mount Potts Station. Plenty of strength and power, ample growth, and a terrific hindquarter. His actual EMA and IMF were very good once again.

Purchaser:

Price: \$

2 YEAR OLD ANGUS BULLS

Lot: 5 MEADOWSLEA T557 ^{PV}

Birth Date: 19/10/22 ID No: 19134022557

MEADOWSLEA M429

MEADOWSLEA R646 ^{PV}

MEADOWSLEA M542

MEADOWSLEA K018

MEADOWSLEA M1014

MEADOWSLEA K950

INDEXES	
SR	HD
+\$117	+\$87

SEPTEMBER 2024 TRANSTASMAN ANGUS CATTLE EVALUATION

CED	DTRS	GL	BW	200	400	600	MCW	Milk
-3.1	-2.9	-2.8	+5.8	+41	+80	+107	+96	+16
53%	42%	61%	75%	71%	71%	74%	68%	57%
SS	DC	CW	EMA	Rib Fat	Rump	RBY %	IMF %	
+3.1	-4.9	+41	+1.2	+0.6	+0.5	+0.8	+0.8	
74%	37%	60%	55%	59%	59%	53%	58%	

Comments: Another very good R646 son out of cow who is breeding well. Strong top, very wide across the loin with a great backend on him. Powerful growth with plenty of fertility - short days to calving and a scrotal EBV in the top 10%. Strong hill country bull with plenty of bone.

Purchaser:

Price: \$

Lot: 6 MEADOWSLEA T393 ^{PV}

Birth Date: 29/09/22 ID No: 19134022393

TAIMATE LAZARUS L12 ^{PV}

MEADOWSLEA P565 ^{SV}

MEADOWSLEA G943

TURIHAUA CRUMP E5 (ET) ^{SV}

MEADOWSLEA P862 ^{SV}

MEADOWSLEA G1066

INDEXES	
SR	HD
+\$122	+\$90

SEPTEMBER 2024 TRANSTASMAN ANGUS CATTLE EVALUATION

CED	DTRS	GL	BW	200	400	600	MCW	Milk
+0.5	-0.4	-5.3	+3.5	+33	+62	+82	+82	+14
55%	46%	59%	75%	72%	72%	75%	69%	58%
SS	DC	CW	EMA	Rib Fat	Rump	RBY %	IMF %	
+2.1	-6.7	+29	+1.4	+2.1	+1.3	+0.2	+1.0	
75%	43%	62%	58%	61%	61%	56%	59%	

Comments: A grandson of the well-known Taimate Lazarus, out of a good cow by Crump who produced another good sale bull last year. Grand-dam bred a stud bull transferred to Okaka Angus in Taihape. Low birthweight and clean shoulders make him very suitable for heifers. Top fertility traits with short gestation and a days to calving figure in the top 1% of the breed! He also had terrific actual IMF and EMA scans and big fats. Upstanding outlook with scope and scale.

Purchaser:

Price: \$

2 YEAR OLD ANGUS BULLS

Lot: 7 MEADOWSLEA T382 ^{PV}

Birth Date: 27/09/22 ID No: 19134022382

TURIHAUA TORPEDO M27 (ET) ^{SV}

TURIHAUA TORNADO Q336 ^{PV}

TURIHAUA L112

MEADOWSLEA K703 ^{SV}

MEADOWSLEA Q152 ^{PV}

MEADOWSLEA H227

INDEXES	
SR	HD
+\$140	+\$78

SEPTEMBER 2024 TRANSTASMAN ANGUS CATTLE EVALUATION

CED	DTRS	GL	BW	200	400	600	MCW	Milk
-3.4	-0.6	-2.4	+5.6	+38	+73	+93	+87	+8
54%	43%	59%	74%	70%	71%	68%	65%	57%
SS	DC	CW	EMA	Rib Fat	Rump	RBY %	IMF %	
+2.9	-5.7	+34	+2.7	+3.0	+2.4	+0.3	+0.6	
73%	40%	59%	56%	59%	59%	54%	59%	

Comments: Beautifully put together son of Turihaua Tornado who we used in the stud ourselves. Structurally very sound with terrific feet and legs. Out of very nice productive young cow, while the grandmother did the full 10 years in the herd. Deep, square type ideally suited for hill country with easy doing fats and a good self-replacing index reflecting a nice balance of data. Days to calving and rib fat are both in the top 10% of the breed and he had another top actual EMA and IMF scan. This is a bull to have a very close look at.

Purchaser:

Price: \$

Lot: 8 MEADOWSLEA T531 ^{PV}

Birth Date: 15/10/22 ID No: 19134022531

MEADOWSLEA P674 ^{SV}

MEADOWSLEA R609 ^{PV}

MEADOWSLEA P666 ^{SV}

MEADOWSLEA M565

MEADOWSLEA P511 ^{SV}

MEADOWSLEA M469

INDEXES	
SR	HD
+\$153	+\$64

SEPTEMBER 2024 TRANSTASMAN ANGUS CATTLE EVALUATION

CED	DTRS	GL	BW	200	400	600	MCW	Milk
-5.4	-3.0	-7.1	+4.3	+36	+74	+87	+74	+10
62%	51%	79%	80%	81%	79%	80%	76%	69%
SS	DC	CW	EMA	Rib Fat	Rump	RBY %	IMF %	
+0.9	-6.9	+31	-1.0	+1.9	+2.7	+0.0	+0.3	
77%	42%	67%	66%	67%	68%	60%	71%	

Comments: A nice low birthweight bull who we rank as one of the stars. Thick, deep, square type with incredible easy fleshing. He is very similarly bred to the lot 1 bull sold to Glen R Angus for the top price in the June sale, and is a very similar type of bull too. This pedigree is stacked with 3 shots of Braveheart, 2 shots of Crump and 2 shots of F540! There is top data here with short gestation in the best 10% of the breed and days to calving in the top 1%, giving that terrific self-replacing index! He has strong fats, had one of the top actual EMA scans and plenty of actual marbling as well.

Purchaser:

Price: \$



FMG
Advice & Insurance

BULL-PROOF

YOUR ASSETS AGAINST RURAL THEFT.

Theft and burglaries occur more often than you might think, and the number of theft claims is increasing.

Over the last five years we have paid \$48 million in theft claims – including \$620k in fuel claims alone, that's doubled since 2019 and equates to over 300,000 litres!*

We have teamed up with NZ Police to create a Rural Crime Prevention Guide to help prevent theft and burglaries at your rural property – find out more at fmg.co.nz/rural-theft

We're here for the good of the country.

*FMG Data 2019 to 2023

2 YEAR OLD ANGUS BULLS

Lot: 9 MEADOWSLEA T348 ^{SV}

Birth Date: 25/09/22 ID No: 19134022348

TURIHAUA APOLLO L383

TURIHAUA JUPITER Q353 ^{PV}

TURIHAUA L84

TURIHAUA CRUMP E5 (ET) ^{SV}

MEADOWSLEA Q265 ^{PV}

MEADOWSLEA J428

INDEXES	
SR	HD
+\$175	+\$87

SEPTEMBER 2024 TRANSTASMAN ANGUS CATTLE EVALUATION

CED	DTRS	GL	BW	200	400	600	MCW	Milk
+0.6	+0.6	-4.8	+3.6	+28	+54	+62	+44	+10
56%	46%	64%	75%	71%	72%	74%	69%	58%
SS	DC	CW	EMA	Rib Fat	Rump	RBY %	IMF %	
+0.4	-7.6	+19	+5.4	+2.9	+2.8	+0.6	+1.6	
74%	42%	61%	59%	61%	61%	56%	62%	

Comments: A son of Turihaua Jupiter with a nice low birthweight. He has good balance and a lovely easy gait. Out of another great Crump cow while his mother bred L202 sold to David Baker and a top bull sold to Mount View. Strong fertility here with days to calving in the top 1%, very good muscle with a massive actual EMA and strong EBV, big fats, and top IMF give a self-replacing index in the top 1%!

Purchaser:	Price: \$
------------	-----------

Lot: 10 MEADOWSLEA T518 ^{PV}

Birth Date: 13/10/22 ID No: 19134022518

MEADOWSLEA P674 ^{SV}

MEADOWSLEA R619 ^{PV}

MEADOWSLEA P777 ^{SV}

TURIHAUA CRUMP E5 (ET) ^{SV}

MEADOWSLEA N143

MEADOWSLEA D088

INDEXES	
SR	HD
+\$113	+\$100

SEPTEMBER 2024 TRANSTASMAN ANGUS CATTLE EVALUATION

CED	DTRS	GL	BW	200	400	600	MCW	Milk
+0.5	-1.3	-5.1	+4.3	+37	+67	+92	+87	+11
50%	40%	53%	72%	68%	70%	67%	63%	52%
SS	DC	CW	EMA	Rib Fat	Rump	RBY %	IMF %	
+0.7	-4.1	+33	+6.3	+0.2	-0.5	+1.6	+0.2	
74%	37%	57%	54%	57%	57%	53%	54%	

Comments: Very nice style of bull here, another one closely related to our lot 1 bull from the June sale. Dam bred a good bull in the 2023 winter sale. Moderate birth and growth, very good muscle with a massive EMA scan, lovely balance and depth to him. Good cut of a bull ideal for heifers with a nice clean shoulder setup.

Purchaser:	Price: \$
------------	-----------

2 YEAR OLD ANGUS BULLS

Lot: 11 MEADOWSLEA T395 ^{PV}

Birth Date: 29/09/22 ID No: 19134022395

MEADOWSLEA MEAT MACHINE G914 ^{SV}

MEADOWSLEA K703 ^{SV}

MEADOWSLEA H126 ^{SV}

MATAURI REALITY 839

MEADOWSLEA J417 ^{SV}

MEADOWSLEA C851

INDEXES	
SR	HD
+\$124	+\$120

SEPTEMBER 2024 TRANSTASMAN ANGUS CATTLE EVALUATION

CED	DTRS	GL	BW	200	400	600	MCW	Milk
+7.5	+5.8	-3.6	+1.2	+28	+58	+75	+55	+17
57%	49%	62%	75%	72%	73%	75%	70%	62%
SS	DC	CW	EMA	Rib Fat	Rump	RBY %	IMF %	
+2.1	-4.8	+28	+2.5	+5.0	+5.2	+0.0	+1.1	
74%	49%	63%	60%	62%	62%	58%	59%	

Comments: A deep, thick, well fleshed son of K703. Like all his progeny he is moderate framed with a strong top and square backend. Out of a direct Reality daughter who featured in the 2023 Female Sale. Exceptional calving ease with low birthweight in the best 5%, moderate cow weight, good milk, and tremendous fats with the rib EBV in the top 1%! An unbeatable option for heifer mating and breeding efficient females.

Purchaser:

Price: \$

Lot: 12 MEADOWSLEA T516 ^{PV}

Birth Date: 13/10/22 ID No: 19134022516

GOLDWYN H817 ^{SV}

TURIROA PANTHER 18P241 (ET) ^{PV}

TURIROA L120 (ET)

MEADOWSLEA L252

MEADOWSLEA N251

MEADOWSLEA L057

INDEXES	
SR	HD
+\$128	+\$88

SEPTEMBER 2024 TRANSTASMAN ANGUS CATTLE EVALUATION

CED	DTRS	GL	BW	200	400	600	MCW	Milk
+0.4	+2.6	-4.2	+3.8	+34	+68	+81	+57	+15
50%	41%	56%	75%	71%	72%	74%	68%	55%
SS	DC	CW	EMA	Rib Fat	Rump	RBY %	IMF %	
+2.1	-4.7	+35	-1.6	+5.1	+5.8	-0.6	+0.8	
74%	38%	61%	56%	60%	59%	55%	55%	

Comments: Moderate framed, deep, thick and easy doing with a very good hindquarter, good top, and massive fats. A son of Panther, out of a good cow by L252 who has bred three very good bulls previously, including the top N166 son S582 sold in 2023. Low birthweight suitable for heifers with short days to calving and unbelievable fats again - both in the top 1% of the breed!

Purchaser:

Price: \$

2 YEAR OLD ANGUS BULLS

Lot: 13 MEADOWSLEA T471 ^{PV}

Birth Date: 08/10/22 ID No: 19134022471

TAIMATE LAZARUS L12 ^{PV}

MEADOWSLEA P565 ^{SV}

MEADOWSLEA G943

MEADOWSLEA N465 ^{SV}

MEADOWSLEA Q256 ^{PV}

MEADOWSLEA N426

INDEXES	
SR	HD
+\$113	+\$91

SEPTEMBER 2024 TRANSTASMAN ANGUS CATTLE EVALUATION

CED	DTRS	GL	BW	200	400	600	MCW	Milk
-0.4	-1.8	-3.6	+5.2	+39	+75	+96	+87	+16
52%	43%	55%	75%	71%	72%	74%	69%	55%
SS	DC	CW	EMA	Rib Fat	Rump	RBV %	IMF %	
+2.2	-5.5	+43	-0.3	+1.2	+0.9	-0.1	+1.4	
74%	40%	61%	57%	60%	60%	55%	56%	

Comments: An upstanding, clean shouldered Lazarus grandson with a nice top, deep body, and good balance. The crucial days to calving figure is in the top 10% of the breed, he has good fats and plenty of IMF. Paperwork also shows a nicely balanced growth curve and a good milk figure.

Purchaser:

Price: \$

Lot: 14 MEADOWSLEA T434 ^{PV}

Birth Date: 04/10/22 ID No: 19134022434

TAIMATE LAZARUS L12 ^{PV}

MEADOWSLEA P565 ^{SV}

MEADOWSLEA G943

MEADOWSLEA M452

MEADOWSLEA P686 ^{SV}

MEADOWSLEA M1042

INDEXES	
SR	HD
+\$124	+\$91

SEPTEMBER 2024 TRANSTASMAN ANGUS CATTLE EVALUATION

CED	DTRS	GL	BW	200	400	600	MCW	Milk
-0.2	-1.5	-4.5	+5.6	+38	+72	+95	+86	+11
53%	44%	56%	76%	72%	73%	76%	70%	57%
SS	DC	CW	EMA	Rib Fat	Rump	RBV %	IMF %	
+3.6	-5.6	+38	+1.0	+1.7	+1.6	+0.0	+0.8	
75%	41%	62%	58%	61%	61%	56%	57%	

Comments: Similar type once again by the same sire as the last, going back to Crump and Rangatira 13-38 as well as Red Oak 378 and Meat Machine. Mother has bred 3 good sale bulls already. Very good hindquarter with depth through the flank. Terrific fertility again - days to calving in the top 10% and scrotal size the top 5%.

Purchaser:

Price: \$

2 YEAR OLD ANGUS BULLS

Lot: 15 MEADOWSLEA T123 ^{PV}

Birth Date: 03/09/22 ID No: 19134022123

MEADOWSLEA P556 ^{SV}

MEADOWSLEA R565 ^{PV}

MEADOWSLEA P882 ^{SV}

MEADOWSLEA M564 ^{SV}

MEADOWSLEA R754 ^{PV}

MEADOWSLEA M588

INDEXES	
SR	HD
+\$165	+\$109

SEPTEMBER 2024 TRANSTASMAN ANGUS CATTLE EVALUATION

CED	DTRS	GL	BW	200	400	600	MCW	Milk
+1.7	-3.4	-4.4	+3.4	+38	+80	+106	+80	+15
61%	50%	79%	80%	81%	79%	80%	76%	69%
SS	DC	CW	EMA	Rib Fat	Rump	RBY %	IMF %	
+2.4	-7.0	+49	+4.6	+2.3	+2.1	+0.3	+2.2	
77%	42%	67%	65%	66%	67%	59%	70%	

Comments: Exceptional data here, a top heifer option. Clean shoulders with calving ease and low birthweight followed by a sharp growth curve. Scrotal size is strong, days to calving in the top 1% again, with big EMA, plenty of fat, IMF in the top 10% and indexes in the top 5%! There aren't many animals with good figures right across the page but this is one of them!

Purchaser:

Price: \$

Lot: 16 MEADOWSLEA T457 ^{PV}

Birth Date: 07/10/22 ID No: 19134022457

TURIHAUA CRUMP E5 (ET) ^{SV}

MEADOWSLEA N166 ^{SV}

MEADOWSLEA G922 ^{SV}

MEADOWSLEA H122

MEADOWSLEA K933

MEADOWSLEA 251

INDEXES	
SR	HD
+\$81	+\$58

SEPTEMBER 2024 TRANSTASMAN ANGUS CATTLE EVALUATION

CED	DTRS	GL	BW	200	400	600	MCW	Milk
-8.7	-1.7	-2.6	+7.1	+39	+74	+104	+108	+14
55%	45%	61%	76%	73%	73%	75%	70%	62%
SS	DC	CW	EMA	Rib Fat	Rump	RBY %	IMF %	
+0.9	-4.0	+42	+4.9	+2.1	+0.7	+1.3	-1.3	
75%	45%	63%	59%	62%	62%	57%	61%	

Comments: Plenty of style and scale about this N166 son. Lovely clean shoulder with a good top and nice balance. Is a second-generation Crump x F540 cross which always works well. Plenty of muscle with a top EMA scan, plenty of fat, and a bit more growth.

Purchaser:

Price: \$

2 YEAR OLD ANGUS BULLS

Lot: 17 MEADOWSLEA T362 ^{PV}

Birth Date: 27/09/22 ID No: 19134022362

RANGATIRA 16209 ^{SV}

MEADOWSLEA Q178 ^{PV}

MEADOWSLEA M475

MEADOWSLEA K703 ^{SV}

MEADOWSLEA R698 ^{PV}

MEADOWSLEA J478

INDEXES	
SR	HD
+\$131	+\$80

SEPTEMBER 2024 TRANSTASMAN ANGUS CATTLE EVALUATION

CED	DTRS	GL	BW	200	400	600	MCW	Milk
-2.7	-0.6	-2.7	+5.4	+34	+72	+94	+95	+11
53%	41%	62%	68%	70%	72%	74%	67%	57%
SS	DC	CW	EMA	Rib Fat	Rump	RBY %	IMF %	
+2.1	-6.4	+31	-0.7	+2.4	+2.5	+0.2	+0.3	
74%	38%	61%	57%	60%	60%	55%	59%	

Comments: Nicely balanced bull by Q178, going back to Crump and Meat Machine. Grand-dam bred 3 good sale bulls and is still going. Clean shoulders, a good top, and great depth of flank with some style about him. Fertility is strong again with days to calving in the top 5% in the breed, with good fats and an impressive index.

Purchaser:

Price: \$

Lot: 18 MEADOWSLEA T535 ^{PV}

Birth Date: 15/10/22 ID No: 19134022535

TURIROA RAMBLE 11541 (ET)

TURIROA 14830 (ET) ^{SV}

TURIROA TULIP 459

RED OAK 378

MEADOWSLEA L057

MEADOWSLEA C808

INDEXES	
SR	HD
+\$96	+\$58

SEPTEMBER 2024 TRANSTASMAN ANGUS CATTLE EVALUATION

CED	DTRS	GL	BW	200	400	600	MCW	Milk
-5.9	-0.2	-1.6	+5.9	+30	+63	+74	+74	+11
53%	44%	53%	76%	72%	73%	75%	70%	60%
SS	DC	CW	EMA	Rib Fat	Rump	RBY %	IMF %	
+1.2	-3.7	+24	+0.2	+1.4	+2.7	+0.4	+0.2	
75%	45%	63%	59%	62%	62%	57%	58%	

Comments: Another clean shouldered, well-balanced bull sired by Turiroa 14830 this time, going back to the Red Oak bull for a different bloodline. Some scope and style about him with strong fats.

Purchaser:

Price: \$

2 YEAR OLD ANGUS BULLS

Lot: 19 MEADOWSLEA T271 ^{PV}

Birth Date: 20/09/22 ID No: 19134022271

GOLDWYN H817 ^{SV}

TURIROA PANTHER 18P241 (ET) ^{PV}

TURIROA L120 (ET)

TAIMATE LAZARUS L12 ^{PV}

MEADOWSLEA Q213 ^{PV}

MEADOWSLEA G911

INDEXES	
SR	HD
+\$137	+\$96

SEPTEMBER 2024 TRANSTASMAN ANGUS CATTLE EVALUATION

CED	DTRS	GL	BW	200	400	600	MCW	Milk
-0.5	+2.9	-4.7	+5.8	+40	+84	+103	+94	+14
55%	46%	65%	74%	70%	71%	68%	65%	56%
SS	DC	CW	EMA	Rib Fat	Rump	RBY %	IMF %	
+1.5	-5.3	+50	+2.2	+2.6	+2.7	+0.1	+0.7	
74%	40%	59%	57%	59%	59%	55%	58%	

Comments: A deep bodied, easy fleshing son of Panther, out of a Lazarus daughter who also bred lot 45 in the yearling catalogue. Grand dam was a high performing Glanworth 0816 who did the full 10 years. Strong early growth through 400 days particularly, his fertility is strong with short days to calving, big fats, and a good actual IMF measurement.

Purchaser:

Price: \$

Lot: 20 MEADOWSLEA T416 ^{PV}

Birth Date: 30/09/22 ID No: 19134022416

GOLDWYN H817 ^{SV}

TURIROA PANTHER 18P241 (ET) ^{PV}

TURIROA L120 (ET)

MEADOWSLEA M564 ^{SV}

MEADOWSLEA Q112 ^{PV}

MEADOWSLEA N197

INDEXES	
SR	HD
+\$132	+\$91

SEPTEMBER 2024 TRANSTASMAN ANGUS CATTLE EVALUATION

CED	DTRS	GL	BW	200	400	600	MCW	Milk
-0.2	+1.0	-4.4	+3.9	+35	+76	+94	+78	+15
52%	42%	61%	75%	71%	72%	73%	68%	54%
SS	DC	CW	EMA	Rib Fat	Rump	RBY %	IMF %	
+2.6	-5.2	+38	-0.5	+4.5	+4.9	-0.3	+0.4	
74%	38%	60%	57%	60%	59%	55%	56%	

Comments: Another moderate framed, deep bodied, easy fleshing Panther with a good outlook. Out of an M564 daughter from where he gets his good data. Low birthweight followed by plenty of growth, strong fertility with good scrotal and short days to calving, and fats in the top 5% of the breed give a big index.

Purchaser:

Price: \$

2 YEAR OLD ANGUS BULLS

Lot: 21 MEADOWSLEA T260 ^{PV}

Birth Date: 19/09/22 ID No: 19134022260

MEADOWSLEA P674 ^{SV}

MEADOWSLEA R609 ^{PV}

MEADOWSLEA P666 ^{SV}

MEADOWSLEA K811

MEADOWSLEA P816 ^{SV}

MEADOWSLEA L085

INDEXES	
SR	HD
+\$112	+\$64

SEPTEMBER 2024 TRANSTASMAN ANGUS CATTLE EVALUATION

CED	DTRS	GL	BW	200	400	600	MCW	Milk
-7.0	-6.1	-3.5	+5.8	+40	+77	+98	+88	+13
48%	38%	51%	71%	66%	65%	64%	61%	49%
SS	DC	CW	EMA	Rib Fat	Rump	RBY %	IMF %	
+1.7	-4.7	+39	+3.6	+0.6	+0.5	+0.7	+0.6	
66%	35%	54%	50%	54%	53%	49%	50%	

Comments: Strong hindquarter, square type, deep and thick. Another of these P674 grandsons with fertility and carcass traits. This bull was born a twin and is on the up and up!

Purchaser:

Price: \$

Lot: 22 MEADOWSLEA T225 ^{PV}

Birth Date: 17/09/22 ID No: 19134022225

RANGATIRA 16209 ^{SV}

MEADOWSLEA Q347 ^{PV}

MEADOWSLEA K944 ^{SV}

MEADOWSLEA K018

MEADOWSLEA N401

MEADOWSLEA A460

INDEXES	
SR	HD
+\$105	+\$95

SEPTEMBER 2024 TRANSTASMAN ANGUS CATTLE EVALUATION

CED	DTRS	GL	BW	200	400	600	MCW	Milk
+2.3	+2.7	-4.3	+2.8	+30	+60	+72	+67	+17
48%	38%	82%	75%	71%	71%	75%	69%	53%
SS	DC	CW	EMA	Rib Fat	Rump	RBY %	IMF %	
+1.5	-4.9	+23	-0.2	+1.4	+1.8	+0.0	+2.0	
74%	37%	61%	56%	58%	57%	53%	55%	

Comments: Thickset, big barreled bull here with depth of body. Very good low birthweight and positive calving ease figures. Fertility is strong and he has plenty of IMF.

Purchaser:

Price: \$

2 YEAR OLD ANGUS BULLS

Lot: 23 MEADOWSLEA T130 ^{PV}

Birth Date: 04/09/22 ID No: 19134022130

RANGATIRA 16209 ^{SV}

MEADOWSLEA Q178 ^{PV}

MEADOWSLEA M475

MEADOWSLEA F540

MEADOWSLEA R747 ^{PV}

MEADOWSLEA H190

INDEXES	
SR	HD
+\$115	+\$103

SEPTEMBER 2024 TRANSTASMAN ANGUS CATTLE EVALUATION

CED	DTRS	GL	BW	200	400	600	MCW	Milk
+3.8	+3.1	-5.5	+2.1	+25	+59	+72	+71	+15
55%	43%	65%	75%	72%	72%	74%	69%	58%
SS	DC	CW	EMA	Rib Fat	Rump	RBY %	IMF %	
+1.8	-5.1	+15	+3.1	+1.8	+1.8	+0.5	+1.1	
73%	39%	61%	58%	60%	60%	55%	60%	

Comments: A well-bred bull here by Q178 out of a 2-year heifer by F540. Grandmother bred a stud bull transferred to Turihaua Angus. Great strong hindquarter, deep, thick, and will keep coming on. Terrific heifer mating figures with strong calving ease, short gestation and very low birthweight. Days to calving is short indicating fertility and his carcass scan showed good EMA, fats, and IMF.

Purchaser:

Price: \$

Lot: 24 MEADOWSLEA T430 ^{PV}

Birth Date: 04/10/22 ID No: 19134022430

TAIMATE LAZARUS L12 ^{PV}

MEADOWSLEA P565 ^{SV}

MEADOWSLEA G943

MEADOWSLEA N157 ^{SV}

MEADOWSLEA Q101 ^{PV}

MEADOWSLEA N310

INDEXES	
SR	HD
+\$115	+\$98

SEPTEMBER 2024 TRANSTASMAN ANGUS CATTLE EVALUATION

CED	DTRS	GL	BW	200	400	600	MCW	Milk
+1.3	+0.0	-4.7	+5.1	+35	+68	+94	+89	+11
51%	42%	53%	75%	71%	72%	74%	69%	55%
SS	DC	CW	EMA	Rib Fat	Rump	RBY %	IMF %	
+3.1	-5.5	+37	+0.1	+1.2	+0.6	+0.2	+1.2	
74%	39%	61%	57%	60%	60%	55%	56%	

Comments: Another clean shouldered bull with a deep body, strong hindquarter, and moderate frame. A Lazarus grandson that also goes back to Crump and Meat Machine. Outstanding fertility with days to calving and scrotal size both in the top 10%.

Purchaser:

Price: \$

2 YEAR OLD ANGUS BULLS

Lot: 25 MEADOWSLEA T228 ^{PV}

Birth Date: 17/09/22 ID No: 19134022228

RANGATIRA COMMODORE 13-19

RANGATIRA 16209 ^{SV}

KAHARAU 09-8703

MEADOWSLEA K018

MEADOWSLEA M475

MEADOWSLEA K920

INDEXES	
SR	HD
+\$107	+\$93

SEPTEMBER 2024 TRANSTASMAN ANGUS CATTLE EVALUATION

CED	DTRS	GL	BW	200	400	600	MCW	Milk
+2.3	+1.7	-5.2	+2.9	+23	+57	+70	+69	+15
50%	36%	83%	75%	70%	67%	67%	65%	56%
SS	DC	CW	EMA	Rib Fat	Rump	RBY %	IMF %	
+2.0	-5.0	+15	+0.3	+1.9	+2.3	+0.5	+0.2	
60%	35%	58%	52%	54%	54%	50%	53%	

Comments: This bull is a full brother to our stud sire Q178. He was left behind to fend for himself on the tussock as a young calf due to a mustering mistake, so was never handled much and missed scanning. Structurally very sound and correct with real potential given that pedigree! Low birthweight with positive calving ease, short days to calving, and positive predicted rib fats.

Purchaser:

Price: \$

Lot: 26 MEADOWSLEA T454 ^{PV}

Birth Date: 07/10/22 ID No: 19134022454

MEADOWSLEA M564 ^{SV}

MEADOWSLEA R684 ^{PV}

MEADOWSLEA H315

MEADOWSLEA P539 ^{SV}

MEADOWSLEA R824 ^{PV}

MEADOWSLEA H118

INDEXES	
SR	HD
+\$123	+\$89

SEPTEMBER 2024 TRANSTASMAN ANGUS CATTLE EVALUATION

CED	DTRS	GL	BW	200	400	600	MCW	Milk
+0.5	+2.0	-4.9	+2.8	+29	+60	+73	+64	+15
46%	36%	52%	73%	69%	69%	73%	67%	49%
SS	DC	CW	EMA	Rib Fat	Rump	RBY %	IMF %	
+2.4	-4.9	+23	+3.1	+3.2	+3.4	+0.6	+0.3	
72%	37%	58%	52%	56%	56%	51%	51%	

Comments: Thick and deep bull in a moderate frame. Very good low birthweight suitable for heifers, strong fertility, good EMA, and massive fats in the top 10% generate an impressive index.

Purchaser:

Price: \$

2 YEAR OLD ANGUS BULLS

Lot: 27 MEADOWSLEA T566^{PV}

Birth Date: 22/10/22 **ID No:** 19134022566

TAIMATE LAZARUS L12^{PV}

TIMPERLEA QUAIN 763^{PV}

TIMPERLEA NAERI 578^{SV}

MEADOWSLEA M564^{SV}

MEADOWSLEA R810^{PV}

MEADOWSLEA H274

INDEXES	
SR	HD
+\$160	+\$109

SEPTEMBER 2024 TRANSTASMAN ANGUS CATTLE EVALUATION

CED	DTRS	GL	BW	200	400	600	MCW	Milk
+4.4	+1.9	-3.8	+2.7	+38	+67	+79	+71	+5
56%	47%	64%	72%	69%	67%	67%	67%	59%
SS	DC	CW	EMA	Rib Fat	Rump	RBV %	IMF %	
+1.5	-6.1	+28	+3.8	+3.3	+3.0	-0.4	+2.4	
64%	40%	58%	58%	60%	60%	55%	61%	

Comments: Super safe heifer mating option with low birthweight, moderate frame, and clean shoulders. Days to calving is exceptional, he has massive fats, IMF in the top 10%, and a terrific self replacing index!

Purchaser:	Price: \$
-------------------	------------------



Proven performance.



Error free, convenient
DNA sampling with Allflex TSU
(tissue sampling unit).

Allflex[®]

Livestock Intelligence

Duncan Steans 027446 5508 (Upper North)
Mark McManaway 027 517 6693 (Lower North)
Steve Kelly 027 560 2699 (South Island)

www.allflex.co.nz

YEARLING ANGUS BULLS

Lot: 28 MEADOWSLEA U338 ^{PV}

Birth Date: 24/09/23 ID No: 19134023338

BASIN RAINMAKER 4404 ^{PV}

KINCARDINE RAINSTORME R25 ^{PV}

KINCARDINE 17-759

MEADOWSLEA M452

MEADOWSLEA Q454 ^{PV}

MEADOWSLEA H131 ^{PV}

INDEXES	
SR	HD
+\$127	+\$124

SEPTEMBER 2024 TRANSTASMAN ANGUS CATTLE EVALUATION

CED	DTRS	GL	BW	200	400	600	MCW	Milk
+5.6	+3.3	-5.7	+4.4	+42	+81	+101	+74	+23
55%	44%	65%	74%	69%	67%	67%	65%	57%
SS	DC	CW	EMA	Rib Fat	Rump	RBY %	IMF %	
+3.4	-4.8	+43	+4.8	+0.7	+0.2	+0.8	+0.0	
61%	37%	58%	57%	59%	59%	53%	60%	

Comments: First of the Rainstorme sons to hit the market. Out of an exceptional cow sold in the 2023 female sale to Jade Park Angus, Australia, who went back to the \$100,000 Rangatira 13-38. Grandmother H131 was transferred to Glengyle Angus in the 2022 female sale as a 10-year-old cow. His pedigree features two shots of Crump, two shots of the legendary Hingaia 469, and the great old cow Meadowslea A300, dam of F540. Exemplifies the Rainstorme bloodline with great topline, length, scope and scale about him with lovely soft skin. Terrific spread of maternal data, with calving ease, short gestation, short days to calving, and moderate cow weight. Milk and scrotal size EBVs are in the top 5%. He has inherited Rainstorme's strong EMA and was the second heaviest bull out of 250 weighed at 400 days. A quality bull with real presence and balance! Jointly owned with Jade Park Angus.

Purchaser:

Price: \$

Lot: 29 MEADOWSLEA U123 ^{PV}

Birth Date: 08/09/23 ID No: 19134023123

BASIN RAINMAKER 4404 ^{PV}

KINCARDINE RAINSTORME R25 ^{PV}

KINCARDINE 17-759

TURIROA PANTHER 18P241 (ET) ^{PV}

MEADOWSLEA S230 ^{PV}

MEADOWSLEA N401

INDEXES	
SR	HD
+\$96	+\$117

SEPTEMBER 2024 TRANSTASMAN ANGUS CATTLE EVALUATION

CED	DTRS	GL	BW	200	400	600	MCW	Milk
+4.2	+5.0	-6.3	+4.5	+46	+87	+108	+81	+29
62%	49%	80%	81%	81%	79%	79%	75%	70%
SS	DC	CW	EMA	Rib Fat	Rump	RBY %	IMF %	
+1.7	-4.3	+69	-0.5	+1.7	+1.4	-0.3	+0.7	
76%	38%	67%	66%	66%	67%	58%	70%	

Comments: Another beautifully balanced Rainstorme. Lovely topline, length, and balance about him again with depth and thickness. Maternal traits are again outstanding with plenty of calving ease, short gestation, and a milk EBV in the top 1% of the breed. His growth is strong coupled with a moderate mature cow weight. Is out of a 2-year-old daughter by Panther.

Purchaser:

Price: \$

YEARLING ANGUS BULLS

Lot: 30 MEADOWSLEA U390 ^{PV}

Birth Date: 27/09/23 ID No: 19134023390

BASIN RAINMAKER 4404 ^{PV}

KINCARDINE RAINSTORME R25 ^{PV}

KINCARDINE 17-759

MEADOWSLEA M452

MEADOWSLEA R708 ^{PV}

MEADOWSLEA L339

INDEXES	
SR	HD
+\$153	+\$135

SEPTEMBER 2024 TRANSTASMAN ANGUS CATTLE EVALUATION

CED	DTRS	GL	BW	200	400	600	MCW	Milk
+8.2	+2.2	-6.3	+3.8	+46	+85	+92	+76	+21
62%	50%	80%	81%	82%	79%	80%	76%	70%
SS	DC	CW	EMA	Rib Fat	Rump	RBY %	IMF %	
+4.1	-5.2	+39	+6.5	-0.5	-1.2	+1.5	-1.1	
76%	40%	67%	66%	67%	67%	59%	71%	

Comments: Rainstorme again! Terrific depth and hindquarter, clean shoulder, real quality about him. Same way bred as lot 1, being out of an M452 daughter going back to Crump, Meat Machine, and Rangatira 13-38. Calving ease is in the top 10% this time, with low birthweight, very strong early growth, milk and scrotal EBVs in the top 5%, EMA in the top 10%, and short days to calving. This is backed up by actual data with the 4th best actual EMA and 400-day weight in the top 5%. All this combines to generate that outstanding index which is in the top 5% of the breed! Great presence and pullup with some scope and scale.

Purchaser:

Price: \$

Lot: 31 MEADOWSLEA U224 ^{PV}

Birth Date: 17/09/23 ID No: 19134023224

BASIN RAINMAKER 4404 ^{PV}

KINCARDINE RAINSTORME R25 ^{PV}

KINCARDINE 17-759

MEADOWSLEA N362

MEADOWSLEA Q403 ^{PV}

MEADOWSLEA N159

INDEXES	
SR	HD
+\$151	+\$105

SEPTEMBER 2024 TRANSTASMAN ANGUS CATTLE EVALUATION

CED	DTRS	GL	BW	200	400	600	MCW	Milk
+2.7	+3.4	-7.3	+2.4	+39	+77	+89	+39	+27
62%	49%	80%	81%	81%	79%	79%	76%	70%
SS	DC	CW	EMA	Rib Fat	Rump	RBY %	IMF %	
+4.5	-5.9	+50	+2.5	+2.8	+2.2	+0.4	-0.2	
76%	38%	67%	65%	66%	67%	58%	70%	

Comments: Powerful head to this well balanced Rainstorme son who has thickness, depth, and a very strong backend. His mother goes back to Meat Machine and bred a good son in the 2023 Bull Sale. EBVs are in the top 1% of the breed for moderate cow weight, milk, and scrotal size with days-to-calving in the top 5%, gestation length in the top 10%, and low birthweight - what an outstanding package for investing in your cow herd! Very good actual EMA, strong rib and rump fats, and the third best scrotal size. This gives a self-replacing index right up there in the top 5%!

Purchaser:

Price: \$

YEARLING ANGUS BULLS

Lot: 32 MEADOWSLEA U415 ^{PV}

Birth Date: 28/09/23 ID No: 19134023415

BASIN RAINMAKER 4404 ^{PV}

KINCARDINE RAINSTORME R25 ^{PV}

KINCARDINE 17-759

GOLDWYN 017 ^{SV}

MEADOWSLEA K965 ^{SV}

MEADOWSLEA 244

INDEXES	
SR	HD
+\$127	+\$113

SEPTEMBER 2024 TRANSTASMAN ANGUS CATTLE EVALUATION

CED	DTRS	GL	BW	200	400	600	MCW	Milk
+6.4	+6.2	-2.5	+2.8	+27	+61	+71	+41	+26
64%	52%	81%	82%	82%	80%	81%	77%	73%
SS	DC	CW	EMA	Rib Fat	Rump	RBY %	IMF %	
+2.5	-5.8	+30	+0.1	+3.3	+3.8	-0.4	+2.9	
78%	42%	69%	67%	68%	69%	60%	72%	

Comments: Like peas in a pod these Rainstorme sons! Very similar bull with great topline, balance, and style. Strong NZ pedigree going back to the \$23,000 Red Oak 378. Terrific maternal data set once again, with outstanding calving ease and low birthweight. His mature cow weight and days to calving are in the best 5% while his milk is again in the top 1% so you can be assured of productive daughters! Strong fats in the top 10% with terrific IMF at plus 3.0, ranking him in the top 5%!

Purchaser:

Price: \$

Lot: 33 MEADOWSLEA U384 ^{PV}

Birth Date: 26/09/23 ID No: 19134023384

BASIN RAINMAKER 4404 ^{PV}

KINCARDINE RAINSTORME R25 ^{PV}

KINCARDINE 17-759

TURIHAUA CRUMP E5 (ET) ^{SV}

MEADOWSLEA H153

MEADOWSLEA C879

INDEXES	
SR	HD
+\$91	+\$131

SEPTEMBER 2024 TRANSTASMAN ANGUS CATTLE EVALUATION

CED	DTRS	GL	BW	200	400	600	MCW	Milk
+7.1	+8.2	-6.3	+3.9	+42	+82	+105	+98	+19
63%	52%	81%	82%	82%	80%	80%	77%	72%
SS	DC	CW	EMA	Rib Fat	Rump	RBY %	IMF %	
+1.1	-2.9	+51	+2.2	+2.1	+1.0	+0.3	+0.7	
77%	44%	69%	67%	68%	69%	61%	72%	

Comments: Great head, smooth topline, great shoulder balance and style. Dam was a good old Crump cow who lasted 12 years in the herd, and the grandmother 16 years so proven longevity here! We bought Rainstorme with a view to giving him these Crump daughters and that cross is everything we had hoped for. Calving ease and short gestation are again excellent, with low birthweight, excellent 400-day growth, strong milk and fats.

Purchaser:

Price: \$

YEARLING ANGUS BULLS

Lot: 34 MEADOWSLEA U124 ^{PV}

Birth Date: 08/09/23 ID No: 19134023124

BASIN RAINMAKER 4404 ^{PV}

KINCARDINE RAINSTORME R25 ^{PV}

KINCARDINE 17-759

MEADOWSLEA Q178 ^{PV}

MEADOWSLEA S162 ^{PV}

MEADOWSLEA Q460 ^{PV}

INDEXES	
SR	HD
+\$138	+\$122

SEPTEMBER 2024 TRANSTASMAN ANGUS CATTLE EVALUATION

CED	DTRS	GL	BW	200	400	600	MCW	Milk
+6.7	+5.7	-3.0	+2.9	+37	+69	+76	+39	+18
62%	49%	80%	81%	81%	79%	79%	75%	70%

SS	DC	CW	EMA	Rib Fat	Rump	RBV %	IMF %
+3.8	-3.3	+21	+9.0	+1.4	+1.9	+0.5	+2.2
76%	38%	67%	66%	67%	67%	59%	71%

Comments: Last in this early run of 7 Rainstormes! Beautifully balanced, slightly more moderate framed, terrific depth, clean shoulder, and a lovely topline. Out of a 2-year heifer by our highly rated homebred bull Q178. Also goes back to Crump, Rangatira 13-38, and our F540 - what a pedigree! Has data to match with terrific calving ease, low birthweight, moderate cow size in the best 1%, and both scrotal and EMA in the top 5% giving a great index. Top cut of a bull!

Purchaser:

Price: \$

Lot: 35 MEADOWSLEA U208 ^{PV}

Birth Date: 14/09/23 ID No: 19134023208

TAIMATE L 38 ^{SV}

TAIMATE ROY R38 (ET) ^{PV}

TAIMATE 1506 ^{SV}

MEADOWSLEA P879 ^{SV}

MEADOWSLEA R898 ^{PV}

MEADOWSLEA P562 ^{SV}

INDEXES	
SR	HD
+\$137	+\$118

SEPTEMBER 2024 TRANSTASMAN ANGUS CATTLE EVALUATION

CED	DTRS	GL	BW	200	400	600	MCW	Milk
+4.5	+2.6	-4.9	+2.3	+43	+79	+101	+89	+15
58%	45%	65%	70%	69%	67%	66%	64%	55%

SS	DC	CW	EMA	Rib Fat	Rump	RBV %	IMF %
+3.1	-5.4	+43	+2.9	+2.6	+2.4	+0.1	+0.7
62%	37%	57%	57%	59%	59%	54%	59%

Comments: First son of Taimate Roy. Plenty of style and scope with a good head, clean shoulders, and nice outlook. This bull was born and reared a twin - the mother was a Crump grand-daughter who weaned 430kg of calves this year! Meat Machine and Rangatira 13-38 also feature in the pedigree. Calving ease and low birthweight are strong once again, and fertility outstanding with both scrotal size and days to calving in the best 10% along with very strong fats.

Purchaser:

Price: \$

YEARLING ANGUS BULLS

Lot: 36 MEADOWSLEA U101 ^{SV}

Birth Date: 25/08/23 ID No: 19134023101

MEADOWSLEA Q223 ^{PV}

MEADOWSLEA S116 ^{PV}

MEADOWSLEA Q173 ^{PV}

MEADOWSLEA P700 ^{SV}

MEADOWSLEA S218 ^{PV}

MEADOWSLEA K874 ^{SV}

INDEXES	
SR	HD
+\$121	+\$102

SEPTEMBER 2024 TRANSTASMAN ANGUS CATTLE EVALUATION

CED	DTRS	GL	BW	200	400	600	MCW	Milk
+4.0	-0.8	-5.4	+1.8	+27	+61	+69	+55	+21
47%	37%	54%	72%	67%	63%	63%	60%	50%
SS	DC	CW	EMA	Rib Fat	Rump	RBY %	IMF %	
+2.4	-5.6	+25	+0.7	+4.3	+4.2	-0.5	+2.7	
54%	33%	54%	49%	52%	52%	47%	51%	

Comments: Terrific power and strength to this lovely low birthweight bull. This was the first calf born in 2023 as expected with the very good short gestation and days to calving figures he has. Low birthweight is in the best 10%. His milk and moderate cow weight EBVs are in the top 5% and he was our 6th heaviest bull out of 250 at 400 days! Carcase data is equally impressive with rib fat, rump fat, and IMF all in the top 5%! Terrific soundness with plenty of scope and scale, an ideal heifer option.

Purchaser:

Price: \$

Lot: 37 MEADOWSLEA U153 ^{PV}

Birth Date: 11/09/23 ID No: 19134023153

GOLDWYN H817 ^{SV}

TURIROA PANTHER 18P241 (ET) ^{PV}

TURIROA L120 (ET)

MEADOWSLEA P539 ^{SV}

MEADOWSLEA R824 ^{PV}

MEADOWSLEA H118

INDEXES	
SR	HD
+\$120	+\$54

SEPTEMBER 2024 TRANSTASMAN ANGUS CATTLE EVALUATION

CED	DTRS	GL	BW	200	400	600	MCW	Milk
-6.2	+5.4	-4.3	+3.9	+28	+55	+68	+49	+15
62%	51%	80%	81%	81%	79%	80%	76%	70%
SS	DC	CW	EMA	Rib Fat	Rump	RBY %	IMF %	
+0.7	-5.4	+34	+1.2	+4.8	+5.2	+0.1	+0.6	
77%	43%	67%	67%	68%	68%	61%	71%	

Comments: Wonderful depth and thickness to this Panther son. Terrific hindquarter, deep flank, strong across the spine with quality and jaw. Will leave efficient productive females with mature cow weight in the best 5% and very good days to calving. Massive rib fat in the top 1% of the breed!

Purchaser:

Price: \$

YEARLING ANGUS BULLS

Lot: 38 MEADOWSLEA U213 ^{PV}

Birth Date: 16/09/23 ID No: 19134023213

MEADOWSLEA L226 ^{SV}

MEADOWSLEA P700 ^{SV}

MEADOWSLEA H117 ^{SV}

MEADOWSLEA MEAT MACHINE G914 ^S

MEADOWSLEA P744 ^{SV}

MEADOWSLEA L139

INDEXES	
SR	HD
+\$112	+\$98

SEPTEMBER 2024 TRANSTASMAN ANGUS CATTLE EVALUATION

CED	DTRS	GL	BW	200	400	600	MCW	Milk
+3.0	-2.9	-4.1	+3.5	+29	+60	+73	+46	+19
55%	44%	61%	75%	70%	68%	68%	67%	61%
SS	DC	CW	EMA	Rib Fat	Rump	RBY %	IMF %	
+2.5	-4.6	+25	+2.3	+4.0	+3.6	-0.2	+1.8	
63%	42%	59%	58%	61%	60%	55%	60%	

Comments: First of the P700 sons, all nice moderate, deep, thick, easy doing bulls. Lovely clean shoulders for heifer mating. The mother is a Meat Machine daughter who also bred a good yearling we used in the stud in 2023. That double up of easy doing bloodlines gives a rib fat EBV in the top 5% with some IMF as well. Quality moderate framed bull.

Purchaser:

Price: \$

Lot: 39 MEADOWSLEA U299 ^{PV}

Birth Date: 21/09/23 ID No: 19134023299

TIMPERLEA QUAIN 763 ^{PV}

MEADOWSLEA S108 ^{PV}

MEADOWSLEA Q181 ^{SV}

MEADOWSLEA K703 ^{SV}

MEADOWSLEA S441 ^{PV}

MEADOWSLEA K041

INDEXES	
SR	HD
+\$108	+\$103

SEPTEMBER 2024 TRANSTASMAN ANGUS CATTLE EVALUATION

CED	DTRS	GL	BW	200	400	600	MCW	Milk
+1.9	-2.9	-3.8	+5.5	+42	+77	+91	+107	+9
59%	48%	78%	79%	80%	77%	78%	74%	68%
SS	DC	CW	EMA	Rib Fat	Rump	RBY %	IMF %	
+2.4	-3.4	+35	+3.0	+2.3	+2.1	+0.5	-0.3	
74%	39%	64%	64%	65%	65%	56%	69%	

Comments: Has some presence and outlook. Goes back to Lazarus, Meat Machine, and Crump. Very strong hindquarter with a lot of visual muscle. Fats, scrotal size, and EMA are strong with a very good actual eye muscle scan. Great topline to him- a good prospect!

Purchaser:

Price: \$

YEARLING ANGUS BULLS

Lot: 40 MEADOWSLEA U211 ^{PV}

Birth Date: 16/09/23 ID No: 19134023211

GOLDWYN H817 ^{SV}

TURIROA PANTHER 18P241 (ET) ^{PV}

TURIROA L120 (ET)

MEADOWSLEA F540

MEADOWSLEA H118

MEADOWSLEA F704

INDEXES	
SR	HD
+\$131	+\$95

SEPTEMBER 2024 TRANSTASMAN ANGUS CATTLE EVALUATION

CED	DTRS	GL	BW	200	400	600	MCW	Milk
+0.9	+3.1	-5.7	+3.5	+33	+70	+82	+71	+18
54%	46%	63%	75%	71%	68%	68%	65%	60%
SS	DC	CW	EMA	Rib Fat	Rump	RBY %	IMF %	
+0.9	-5.3	+34	+2.9	+4.3	+4.7	-0.1	+1.5	
62%	43%	59%	57%	59%	59%	55%	58%	

Comments: Another of these impressive Panther sons, out of a 12-year-old F540 cow - giving that terrific Crump x F540 cross. Great length, width across the top, and a strong hindquarter. Short gestation and low birthweight plus strong DtC give a good maternal package, while his IMF scan was strong and his fat EBVs are in the top 5%. Lovely clean shoulders for heifer mating with nice head and outlook.

Purchaser:

Price: \$

Lot: 41 MEADOWSLEA U433 ^{PV}

Birth Date: 30/09/23 ID No: 19134023433

MEADOWSLEA L226 ^{SV}

MEADOWSLEA P700 ^{SV}

MEADOWSLEA H117 ^{SV}

TURIHAUA LOYALTY L44 (ET)

MEADOWSLEA P594 ^{SV}

MEADOWSLEA H229

INDEXES	
SR	HD
+\$90	+\$108

SEPTEMBER 2024 TRANSTASMAN ANGUS CATTLE EVALUATION

CED	DTRS	GL	BW	200	400	600	MCW	Milk
+3.2	-1.8	-1.6	+3.5	+35	+70	+91	+66	+23
63%	52%	80%	82%	82%	80%	81%	77%	72%
SS	DC	CW	EMA	Rib Fat	Rump	RBY %	IMF %	
+4.6	-3.7	+33	+3.9	+2.0	+0.5	+0.2	+1.9	
78%	45%	69%	68%	69%	69%	62%	72%	

Comments: Another of these good P700s showing the usual attributes. Easy fleshing, good hindquarter, plenty of scope and scale with clean shoulders and outlook. Low birthweight with a moderate cow size, a milk EBV in the top 5% and scrotal in the top 1%! Rib fat is strong and we get the customary P700 IMF as well.

Purchaser:

Price: \$

YEARLING ANGUS BULLS

Lot: 42 MEADOWSLEA U386 PV

Birth Date: 26/09/23 ID No: 19134023386

WAITAWHETA N41 SV

ROCKLEY R41 PV

TE ATARANGI MISSY P802 SV

RANGATIRA 16209 SV

MEADOWSLEA S165 PV

MEADOWSLEA K804 SV

INDEXES	
SR	HD
+\$144	+\$103

SEPTEMBER 2024 TRANSTASMAN ANGUS CATTLE EVALUATION

CED	DTRS	GL	BW	200	400	600	MCW	Milk
+2.5	+1.4	-7.5	+4.2	+39	+67	+84	+85	+14
52%	41%	60%	72%	67%	64%	64%	62%	55%
SS	DC	CW	EMA	Rib Fat	Rump	RBY %	IMF %	
+4.1	-6.8	+23	+2.3	+2.0	+1.8	+0.4	+0.7	
58%	33%	55%	55%	57%	57%	51%	57%	

Comments: Thick, deep bodied bull with scope and scale about him. First Rockley son for this year, out of a 2-year-old heifer. Goes back to F540 and Rangatira 16209. Grandmother was a top F540 daughter transferred to Sarah Catherwood in our 2024 female sale. Short gestation and scrotal size are in the top 5%, and days to calving the top 1% - so unbeatable fertility traits! Actual EMA was strong, he has positive fats, and that is a more than handy IMF figure. All this gives an impressive self-replacing index. Good skin on him, nice topline, strong hindquarter.

Purchaser:

Price: \$

Lot: 43 MEADOWSLEA U104 PV

Birth Date: 28/08/23 ID No: 19134023104

BASIN RAINMAKER 4404 PV

KINCARDINE RAINSTORME R25 PV

KINCARDINE 17-759

MEADOWSLEA N166 SV

MEADOWSLEA S284 PV

MEADOWSLEA H144 SV

INDEXES	
SR	HD
+\$188	+\$118

SEPTEMBER 2024 TRANSTASMAN ANGUS CATTLE EVALUATION

CED	DTRS	GL	BW	200	400	600	MCW	Milk
+10.1	+7.0	-9.5	+0.4	+16	+41	+39	-5	+19
63%	51%	81%	82%	82%	80%	80%	77%	71%
SS	DC	CW	EMA	Rib Fat	Rump	RBY %	IMF %	
+2.3	-7.6	+9	+7.0	+5.5	+6.9	+0.4	+0.5	
77%	41%	68%	67%	67%	68%	60%	72%	

Comments: Lovely moderate framed, beautifully balanced Rainstorme son showing all the attributes we have very quickly come to expect. Clean shoulder, smooth skinned, easy fleshing bull with balance and style. Calving ease and low birthweight are in the top 5%, while short gestation mature cow size, days to calving, rib fat, and rump fat are all in the top 1%, together with an unbelievable index! Plenty of EMA as well. His actual 200- and 400-day growth as well as daily weight gain were well above the mob average - every now and then genomic EBVs do just seem to miss the mark on a trait and it will be interesting to see how the EBVs respond to his actual growth data.

Purchaser:

Price: \$

YEARLING ANGUS BULLS

Lot: 44 MEADOWSLEA U254 ^{PV}

Birth Date: 18/09/23 ID No: 19134023254

TAIMATE LAZARUS L12 ^{PV}

MEADOWSLEA P565 ^{SV}

MEADOWSLEA G943

GOLDWYN 017 ^{SV}

MEADOWSLEA L192

MEADOWSLEA H146

INDEXES	
SR	HD
+\$114	+\$95

SEPTEMBER 2024 TRANSTASMAN ANGUS CATTLE EVALUATION

CED	DTRS	GL	BW	200	400	600	MCW	Milk
+0.0	-0.2	-4.8	+4.6	+36	+75	+102	+102	+16
54%	46%	59%	75%	70%	67%	68%	65%	59%
SS	DC	CW	EMA	Rib Fat	Rump	RBY %	IMF %	
+2.8	-6.5	+41	-0.9	+0.5	-0.1	+0.0	+1.7	
62%	42%	59%	57%	59%	58%	54%	58%	

Comments: Well balanced, deep bodied bull with clean shoulders and a strong coat. Outstanding fertility with good scrotal EBV and days to calving in the top 5%, while having old Goldwyn in the background ensures a strong IMF EBV. Mother has bred a couple of top bulls including lot 8 in this year's sale whom we had used as a yearling, and grandmother has also bred a couple of very good sons.

Purchaser:

Price: \$

Lot: 45 MEADOWSLEA U135 ^{PV}

Birth Date: 10/09/23 ID No: 19134023135

RANGATIRA 16209 ^{SV}

MEADOWSLEA Q347 ^{PV}

MEADOWSLEA K944 ^{SV}

TAIMATE LAZARUS L12 ^{PV}

MEADOWSLEA Q213 ^{PV}

MEADOWSLEA G911

INDEXES	
SR	HD
+\$122	+\$97

SEPTEMBER 2024 TRANSTASMAN ANGUS CATTLE EVALUATION

CED	DTRS	GL	BW	200	400	600	MCW	Milk
+1.6	+2.5	-3.6	+3.9	+33	+65	+82	+83	+12
54%	43%	64%	74%	69%	64%	65%	63%	54%
SS	DC	CW	EMA	Rib Fat	Rump	RBY %	IMF %	
+2.4	-5.3	+26	+2.8	+1.5	+1.7	+0.3	+1.4	
59%	38%	56%	53%	55%	55%	51%	56%	

Comments: Compact, deep bodied bull with a strong coat and clean shoulders again. Interesting pedigree - sire Q347 was sold to Glen R Angus for \$32,000 in 2021, and he is out of a direct Lazarus daughter who also bred a good bull the previous year. Strong fertility traits with impressive scrotal size and days to calving, plus IMF in the top 30% of the breed, which generate a very good index.

Purchaser:

Price: \$

YEARLING ANGUS BULLS

Lot: 46 MEADOWSLEA U256 ^{PV}

Birth Date: 19/09/23 ID No: 19134023256

KAHARAU ATLANTIC 454 ^{SV}

KAHARAU OLYMPIC Q327 ^{SV}

KAHARAU 1058

TURIHAU CRUMP E5 (ET) ^{SV}

MEADOWSLEA L062

MEADOWSLEA F562

INDEXES	
SR	HD
+\$105	+\$85

SEPTEMBER 2024 TRANSTASMAN ANGUS CATTLE EVALUATION

CED	DTRS	GL	BW	200	400	600	MCW	Milk
-1.8	-7.0	-2.9	+3.9	+34	+68	+97	+102	+10
64%	53%	82%	82%	82%	80%	81%	77%	71%
SS	DC	CW	EMA	Rib Fat	Rump	RBV %	IMF %	
+0.8	-5.9	+47	+1.5	+1.9	+0.9	+0.2	+1.2	
78%	45%	70%	69%	69%	70%	63%	73%	

Comments: Solid thick type by Kaharau Olympic who sold for \$106,000 in 2021. Deep bodied, great outlook, with the strong head and bone we expect of the Kaharau prefix. Low birthweight followed by strong growth with rib fat in the top 30%.

Purchaser:

Price: \$

Lot: 47 MEADOWSLEA U114 ^{PV}

Birth Date: 06/09/23 ID No: 19134023114

MEADOWSLEA MEAT MACHINE G914 ^{SV}

MEADOWSLEA R818 ^{PV}

MEADOWSLEA N108

MEADOWSLEA P565 ^{SV}

MEADOWSLEA S252 ^{PV}

MEADOWSLEA H246

INDEXES	
SR	HD
+\$113	+\$98

SEPTEMBER 2024 TRANSTASMAN ANGUS CATTLE EVALUATION

CED	DTRS	GL	BW	200	400	600	MCW	Milk
+1.1	+0.0	-4.6	+4.1	+37	+73	+96	+84	+14
56%	44%	65%	74%	70%	66%	67%	65%	57%
SS	DC	CW	EMA	Rib Fat	Rump	RBV %	IMF %	
+3.1	-4.7	+45	-1.2	+1.8	+1.9	+0.1	+0.5	
62%	39%	58%	57%	59%	59%	54%	60%	

Comments: First of a very good draft of R818 sons this year. R818 was sold to Jade Park Angus in Australia in 2022. U114 is out of a 2-year-old heifer who goes back to Lazarus and Crump. His grandmother bred stud sire L256 and a top son sold to Ben McLaughlan. Moderate birthweight suitable for heifers with outstanding fats and fertility - with the largest-equal actual scrotal size. Great thick, square type with a nice topline, clean shoulder, and good outlook.

Purchaser:

Price: \$



The award-winning [yourbid](#) online selling platform was developed by the Giddings Family for their 2020 Angus Female Sale which was held during the first Covid Lockdown.

The system was further developed to incorporate on-farm and online bidding, and has been used successfully for 16 further sales at Meadowslea.

It has also been use to run a number of sheep and cattle sales for other studs both in NZ and the UK.

For all enquiries to use [yourbid](#) please contact george@yourbid.org



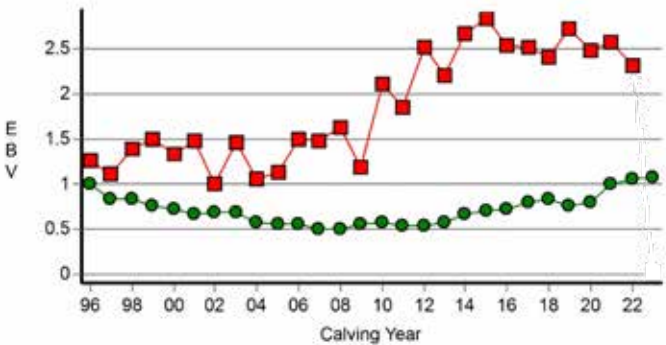
The development of the “Meadowslea Hill Country Type”

has been the result of 25 years of selecting animals that perform the best in our hash hill country environment. Cows that can winter easily on the hill without supplements, stay in good order, calve easily and get back in calf early every year for 10 years has been the focus of our breeding programme.

Ultra-sound scanning has confirmed to us that these easy doing cattle have higher levels of Rib and Rump fat. Science has now recognised that these higher fat levels result in heifers getting in calf earlier with higher conception rates. These higher fat levels also result in increased fertility in the whole herd with earlier rebreeding and less dry cows.

These great positive fat EBV's in the Meadowslea herd have come about simply by selecting animals that suit the Hill Country environment.

Carcase Rib Fat (mm)



- Meadowslea herd
- Australasian herd average

Graph showing improvement in fat EBVs at Meadowslea while running the herd on hill country, compared with Australasian average. From TransTasman Angus Cattle Evaluation, April 2022.

The average rib fat EBVs of the bulls in this catalogue ranks in the top 25% of the breed in NZ.

Meadowslea Proven Herd Sires



Meadowslea F540

Trait leader for short gestation and milk, with a days to calving figure in the top 5% of the breed. He ranks in the top 10% for rib fat, rump fat, and IMF. He was ranked 3rd for short gestation in the BLNZ Dairy Beef Progeny Test in in 2018. His progeny also performed very strongly in the BLNZ Beef Progeny Test cohort 2 -for both growth and carcass traits. He is no longer with us but shows up in the pedigrees of most of the bulls in this catalogue.



Turihaua Crump E5

Trait leader for the all important Days to Calving at an incredible -10.1 days, as proven with over 500 recorded progeny across Australia and NZ. His daughters and grand-daughters are among the best females we have ever had. He has low birthweight, massive fat EBVs, and good IMF giving a self-replacing index in the top 10% of the breed. His progeny crossed with F540 have become legendary, and the cross with Rainstorne might be even better!

- Breed Trait Leaders for Maternal and Fertility Traits



Meadowslea Meat Machine G914

Exceptional thickness and fertility traits. He has terrific calving ease and low birthweight in the best 10% of the breed making his descendants ideal for mating heifers or dairy cows. His days to calving is strong reflecting fertility, fats are off the scale, and the all important self-replacing index in the top 5% of the breed! His son R818 was sold to Jade Park Angus, Australia, and will have a big impact on the 2025 winter catalogue.



Meadowslea P700

A product of the great F540 x Crump cross, this bull has emerged as a trait leader for IMF with an incredible EBV of +5.0 – ranking him in the top echelon anywhere! Him and his sons have ideal heifer mating figures with strong calving ease and low birthweight. His scrotal size EBV is right up there reflecting early maturity and his rib fat is also in the top 1%! He has some outstanding yearling sons on offer.

The

• **FAIRLIE BAKEHOUSE** •

South Canterbury

Meadowslea proudly supplies

FAIRLIE BAKEHOUSE

With the finest Angus beef

*Come and taste these
fantastic pies at our*

**BULL SALE
FRIDAY 4th
OCTOBER**



DEFER-A-BULL.

Farm smarter.

**BUY BULLS NOW,
PAY LATER!**

**Contact your local livestock rep to get the best genetics
for your business.**

JOE HIGGINS

Mid/Sth Canterbury -
Regional Livestock Manager
027 289 9872

JOHN MCKONE

Canterbury - Genetics Rep / Auctioneer
027 289 9872

SIMON EDDINGTON

Upper South Island - Genetics Rep
027 590 8612

CALLUM MCDONALD

Lower South Island - Genetics Rep
027 433 6443

GREG UREN

Mid/Sth Canterbury - Livestock Rep
027 431 4051

NEIL CARTER

Mid/Sth Canterbury - Livestock Rep
027 282 1104

BRUCE DUNBAR

Mid/Sth Canterbury - Livestock Rep
027 595 6473

BERNIE COX

Mid/Sth Canterbury - Livestock Rep
027 477 0551

CAM GRAY

Mid/Sth Canterbury - Livestock Rep
027 494 0572

ANDY CUNNINGHAM

Mid/Sth Canterbury - Livestock Rep
027 566 8243

BARRY FOX

Otago - Livestock / Dairy Rep
027 439 3317

www.pggwrightson.co.nz/defer-a-bull

 [fb.com/pgwlivestock](https://www.facebook.com/pgwlivestock)
 [@instagram.com/pgwlivestock](https://www.instagram.com/pgwlivestock)

scan to see
the sale dates



YEARLING ANGUS BULLS

Lot: 48 MEADOWSLEA U215 ^{PV}

Birth Date: 16/09/23 ID No: 19134023215

TAIMATE LAZARUS L12 ^{PV}

MEADOWSLEA P556 ^{SV}

MEADOWSLEA F530

MEADOWSLEA L226 ^{SV}

MEADOWSLEA N264

MEADOWSLEA E293

INDEXES	
SR	HD
+\$139	+\$102

SEPTEMBER 2024 TRANSTASMAN ANGUS CATTLE EVALUATION

CED	DTRS	GL	BW	200	400	600	MCW	Milk
+1.4	-6.0	-0.7	+4.8	+41	+82	+93	+105	+3
64%	54%	80%	81%	82%	80%	80%	77%	72%
SS	DC	CW	EMA	Rib Fat	Rump	RBY %	IMF %	
+2.5	-3.6	+40	+0.3	+1.7	+5.1	-0.2	+1.1	
77%	45%	69%	68%	68%	69%	61%	72%	

Comments: A yearling bred by AI to P556 who was a stud bull sold to Helmsdale Angus in 2020. Clean shouldered and well balanced, with scope, scale, and good outlook. Mother is a good L226 daughter who also bred T441, used in the stud then sold at lot 19 this year. Very strong early growth with good scrotal size and rump fat in the top 5% and an impressive actual IMF of 4.6 which help generate that good index.

Purchaser:

Price: \$

Lot: 49 MEADOWSLEA U156 ^{PV}

Birth Date: 11/09/23 ID No: 19134023156

WAITAWHETA N41 ^{SV}

ROCKLEY R41 ^{PV}

TE ATARANGI MISSY P802 ^{SV}

TURIHAUA RHINESTONE P186 ^{PV}

MEADOWSLEA S314 ^{PV}

MEADOWSLEA P826 ^{SV}

INDEXES	
SR	HD
+\$95	+\$79

SEPTEMBER 2024 TRANSTASMAN ANGUS CATTLE EVALUATION

CED	DTRS	GL	BW	200	400	600	MCW	Milk
-4.0	-0.5	-4.2	+7.2	+48	+84	+109	+100	+17
62%	50%	79%	81%	81%	79%	80%	76%	70%
SS	DC	CW	EMA	Rib Fat	Rump	RBY %	IMF %	
+4.2	-4.8	+46	+0.7	-0.5	-1.2	-0.3	+1.9	
76%	39%	67%	66%	67%	68%	59%	71%	

Comments: First of a trio of Rockley sons penned up together, this one out of a 2-year heifer by Turihaua Rhinestone. Deep barrelled and upstanding with good length to him. Terrific growth with short days to calving, impressive IMF, and a scrotal EBV in the top 1% for the Angus breed. Actual EMA and IMF were right at the top of the mob.

Purchaser:

Price: \$

YEARLING ANGUS BULLS

Lot: 50 MEADOWSLEA U283 ^{PV}

Birth Date: 20/09/23 ID No: 19134023283

WAITAWHETA N41 ^{SV}

ROCKLEY R41 ^{PV}

TE ATARANGI MISSY P802 ^{SV}

TURIHAUA RHINESTONE P186 ^{PV}

MEADOWSLEA S533 ^{PV}

MEADOWSLEA N198

INDEXES	
SR	HD
+\$147	+\$105

SEPTEMBER 2024 TRANSTASMAN ANGUS CATTLE EVALUATION

CED	DTRS	GL	BW	200	400	600	MCW	Milk
+3.0	+1.8	-7.0	+4.2	+38	+69	+85	+79	+13
52%	41%	60%	72%	67%	64%	64%	62%	55%
SS	DC	CW	EMA	Rib Fat	Rump	RBY %	IMF %	
+4.2	-6.5	+22	+1.7	+1.6	+1.6	+0.1	+1.7	
59%	32%	55%	55%	57%	57%	51%	58%	

Comments: Similar type by the same cross with a wide top, clean shoulders, and good backend. Grand dam bred a top son used in the stud in 2023. Fertility traits are outstanding with short gestation in the top 10%, days to calving in the top 5%, and scrotal size the top 1%. He also scanned very well for actual IMF and all that gives him an index in the top 10% of the breed.

Purchaser:

Price: \$

Lot: 51 MEADOWSLEA U183 ^{PV}

Birth Date: 13/09/23 ID No: 19134023183

WAITAWHETA N41 ^{SV}

ROCKLEY R41 ^{PV}

TE ATARANGI MISSY P802 ^{SV}

MEADOWSLEA Q295 ^{PV}

MEADOWSLEA S152 ^{PV}

MEADOWSLEA Q381 ^{PV}

INDEXES	
SR	HD
+\$112	+\$107

SEPTEMBER 2024 TRANSTASMAN ANGUS CATTLE EVALUATION

CED	DTRS	GL	BW	200	400	600	MCW	Milk
+3.0	+0.8	-6.3	+3.3	+42	+72	+93	+92	+11
61%	49%	79%	80%	81%	78%	79%	75%	70%
SS	DC	CW	EMA	Rib Fat	Rump	RBY %	IMF %	
+3.5	-5.0	+34	+0.2	+0.9	-1.1	-0.1	+2.5	
76%	37%	66%	65%	66%	67%	57%	70%	

Comments: Impressive upstanding bull with a lot of width across the top. By Rockley again and back to Meat Machine on the dam side, with the sire of dam sold to McFadzean Angus. His short gestation, low birthweight, and days to calving figures are very strong while his scrotal size is in the top 5%. Actual EMA was very good and his IMF is in the top 10% of the breed too!

Purchaser:

Price: \$

YEARLING ANGUS BULLS

Lot: 52 MEADOWSLEA U240 ^{PV}

Birth Date: 17/09/23 ID No: 19134023240

BASIN RAINMAKER 4404 ^{PV}

KINCARDINE RAINSTORME R25 ^{PV}

KINCARDINE 17-759

GOLDWYN 017 ^{SV}

MEADOWSLEA M626

MEADOWSLEA H126 ^{SV}

INDEXES	
SR	HD
+\$119	+\$118

SEPTEMBER 2024 TRANSTASMAN ANGUS CATTLE EVALUATION

CED	DTRS	GL	BW	200	400	600	MCW	Milk
+5.4	+2.0	-4.8	+3.0	+44	+69	+88	+54	+23
63%	51%	81%	81%	82%	79%	80%	77%	72%
SS	DC	CW	EMA	Rib Fat	Rump	RBV %	IMF %	
+3.4	-4.9	+36	+6.4	+1.9	+1.0	+0.1	+2.0	
77%	42%	68%	67%	67%	68%	59%	71%	

Comments: Back to Rainstorme again. Goes back to the great Crump daughter H126 who was the mother of K703 and was eventually sold as a 10-year-old to Picton Park Angus. Calving ease and low birthweight are very good, while milk, scrotal size, and MCW are in the top 5% - with the mature cow size closer to the 200-day than the 400-day figure! Carcase data is outstanding with the big EMA in the top 10%, good rib fat, and terrific IMF coming through from old Goldwyn. Very sound, upstanding, clean shouldered bull with plenty of presence and style.

Purchaser:

Price: \$

Lot: 53 MEADOWSLEA U474 ^{PV}

Birth Date: 04/10/23 ID No: 19134023474

MEADOWSLEA L226 ^{SV}

MEADOWSLEA P700 ^{SV}

MEADOWSLEA H117 ^{SV}

MEADOWSLEA P539 ^{SV}

MEADOWSLEA R816 ^{PV}

MEADOWSLEA M406

INDEXES	
SR	HD
+\$96	+\$87

SEPTEMBER 2024 TRANSTASMAN ANGUS CATTLE EVALUATION

CED	DTRS	GL	BW	200	400	600	MCW	Milk
-1.8	-6.3	-4.3	+6.0	+41	+76	+103	+84	+19
54%	42%	61%	74%	70%	67%	68%	67%	59%
SS	DC	CW	EMA	Rib Fat	Rump	RBV %	IMF %	
+3.4	-4.9	+41	-0.5	+2.6	+1.4	-0.4	+2.1	
63%	39%	58%	57%	60%	60%	55%	59%	

Comments: Classic P700 showing lovely width across the top, great skin and coat, strong hindquarter, and a clean shoulder. Goes back to Red Oak and has Crump in the background. Fertility is excellent with big fats, short days to calving and scrotal size in the top 5% of the breed, strong rib, and terrific IMF. Actual adjusted EMA was very good.

Purchaser:

Price: \$

YEARLING ANGUS BULLS

Lot: 54 MEADOWSLEA U158 ^{PV}

Birth Date: 12/09/23 ID No: 19134023158

TURIROA 14830 (ET) ^{SV}

MEADOWSLEA N210 ^{SV}

MEADOWSLEA H283 ^{SV}

MEADOWSLEA N119 ^{SV}

MEADOWSLEA Q203 ^{PV}

MEADOWSLEA M581

INDEXES	
SR	HD
+\$132	+\$58

SEPTEMBER 2024 TRANSTASMAN ANGUS CATTLE EVALUATION

CED	DTRS	GL	BW	200	400	600	MCW	Milk
-5.0	+2.3	-5.3	+4.9	+25	+55	+68	+47	+13
61%	51%	79%	80%	81%	79%	79%	76%	70%
SS	DC	CW	EMA	Rib Fat	Rump	RBY %	IMF %	
+1.9	-6.2	+21	+0.6	+4.0	+5.8	-0.5	+1.6	
76%	43%	67%	66%	67%	68%	60%	71%	

Comments: Nice blocky type of bull with very good balance, style and pull up, and a strong hindquarter. Goes back to Braveheart and Crump. Expect efficient, productive daughters with moderate mature cow weight and short days to calving. Rib fat is in the top 5% of the breed and rump fat in the top 1%! IMF was also strong with one of the top actual scans.

Purchaser:

Price: \$

Lot: 55 MEADOWSLEA U334 ^{PV}

Birth Date: 24/09/23 ID No: 19134023334

MEADOWSLEA L226 ^{SV}

MEADOWSLEA P700 ^{SV}

MEADOWSLEA H117 ^{SV}

MEADOWSLEA K018

MEADOWSLEA N401

MEADOWSLEA A460

INDEXES	
SR	HD
+\$118	+\$110

SEPTEMBER 2024 TRANSTASMAN ANGUS CATTLE EVALUATION

CED	DTRS	GL	BW	200	400	600	MCW	Milk
+7.5	+4.2	-4.7	+0.8	+22	+49	+55	+11	+21
62%	51%	79%	81%	81%	79%	80%	76%	71%
SS	DC	CW	EMA	Rib Fat	Rump	RBY %	IMF %	
+1.0	-4.4	+15	+0.0	+5.4	+6.8	-1.2	+3.9	
77%	43%	68%	67%	68%	68%	60%	71%	

Comments: Great thick pen of bulls here, leading off with this P700 son. Goes back to Goldwyn on the dam side which has always been a top cross. IMF is in the top 1%, as are his rib fats and mature cow weight, with milk not far behind. His actual EMA ratio was very good. If you're looking for calving ease and low birthweight to mate heifers you couldn't do much better! Thick, deep and square with a lovely coat, great head and outlook.

Purchaser:

Price: \$

YEARLING ANGUS BULLS

Lot: 56 MEADOWSLEA U376 ^{PV}

Birth Date: 26/09/23 ID No: 19134023376

MEADOWSLEA K904

MEADOWSLEA N119 ^{SV}

MEADOWSLEA E350

MEADOWSLEA N166 ^{SV}

MEADOWSLEA R675 ^{PV}

MEADOWSLEA N406

INDEXES	
SR	HD
+\$135	+\$107

SEPTEMBER 2024 TRANSTASMAN ANGUS CATTLE EVALUATION

CED	DTRS	GL	BW	200	400	600	MCW	Milk
+7.0	+6.8	-3.9	+2.5	+18	+35	+48	+13	+23
64%	52%	81%	82%	82%	80%	81%	78%	72%
SS	DC	CW	EMA	Rib Fat	Rump	RBY %	IMF %	
+3.4	-7.0	-2	+7.2	+4.2	+4.0	+0.6	+0.9	
78%	46%	70%	69%	70%	70%	63%	73%	

Comments: Great barrel to this N119 son. Thick and deep with a square top and a great backend. Terrific calving ease and low birthweight again, with days to calving and mature cow weight in the top 1% of the breed! His scrotal size, milk, and rib fats are in the top 5% and he has outstanding EMA too as well as a very impressive actual IMF of 4.4. As you'd expect he ends up with a very good SRI.

Purchaser:

Price: \$

Lot: 57 MEADOWSLEA U418 ^{PV}

Birth Date: 29/09/23 ID No: 19134023418

MEADOWSLEA M429

MEADOWSLEA R646 ^{PV}

MEADOWSLEA M542

MEADOWSLEA K961

MEADOWSLEA M587

MEADOWSLEA K781

INDEXES	
SR	HD
+\$94	+\$86

SEPTEMBER 2024 TRANSTASMAN ANGUS CATTLE EVALUATION

CED	DTRS	GL	BW	200	400	600	MCW	Milk
-0.3	+4.6	-4.2	+3.7	+30	+64	+86	+83	+19
62%	50%	79%	81%	82%	79%	80%	76%	71%
SS	DC	CW	EMA	Rib Fat	Rump	RBY %	IMF %	
+0.2	-5.3	+27	-3.8	+3.4	+3.3	-0.2	+1.3	
77%	42%	67%	66%	68%	68%	60%	71%	

Comments: Strong coat on this R646 son with plenty of depth and thickness. Low birthweight with decent growth, massive fats, and plenty of IMF here. Daughters should perform with milk and days to calving in the top 15%.

Purchaser:

Price: \$

YEARLING ANGUS BULLS

Lot: 58 MEADOWSLEA U519 ^{PV}

Birth Date: 10/10/23 **ID No:** 19134023519

TAIMATE LAZARUS L12 ^{PV}

MEADOWSLEA P565 ^{SV}

MEADOWSLEA G943

TURIHAUA CRUMP E5 (ET) ^{SV}

MEADOWSLEA J646

MEADOWSLEA F704

INDEXES	
SR	HD
+\$95	+\$112

SEPTEMBER 2024 TRANSTASMAN ANGUS CATTLE EVALUATION

CED	DTRS	GL	BW	200	400	600	MCW	Milk
+6.3	+3.5	-6.6	+2.5	+29	+58	+75	+75	+14
65%	55%	81%	82%	83%	81%	81%	78%	74%
SS	DC	CW	EMA	Rib Fat	Rump	RBY %	IMF %	
+2.7	-4.4	+16	+0.2	+2.0	+2.0	-0.3	+2.3	
78%	48%	70%	70%	70%	71%	64%	73%	

Comments: Nice deep-bodied bull with a bit more scale and stretch about him. Good head and clean shoulder. By our Lazarus son P565, out of a Crump cow who bred Q141, sold to Glanworth Angus for \$24,000. Terrific heifer mating figures with big calving ease and very low birthweight, scrotal EBV in the top 20%, strong fats, and IMF in the top 10%. Plenty to recommend him!

Purchaser:

Price: \$

Lot: 59 MEADOWSLEA U404 ^{PV}

Birth Date: 28/09/23 **ID No:** 19134023404

MEADOWSLEA K703 ^{SV}

MEADOWSLEA S273 ^{PV}

MEADOWSLEA K767 ^{SV}

TIMPERLEA QUAIN 763 ^{PV}

MEADOWSLEA S107 ^{PV}

MEADOWSLEA Q484 ^{PV}

INDEXES	
SR	HD
+\$112	+\$127

SEPTEMBER 2024 TRANSTASMAN ANGUS CATTLE EVALUATION

CED	DTRS	GL	BW	200	400	600	MCW	Milk
+9.3	+7.7	-5.6	+1.9	+32	+58	+74	+59	+9
62%	52%	80%	81%	82%	79%	80%	76%	71%
SS	DC	CW	EMA	Rib Fat	Rump	RBY %	IMF %	
-0.4	-4.1	+34	+2.1	+1.9	-1.5	+0.8	+0.6	
77%	42%	67%	67%	67%	68%	59%	72%	

Comments: Good backend on this fellow. Wide across the top with clean shoulders and good outlook. Out of a 2-year-old heifer by Quain, with another shot of Reality in the sire line as well. Exceptional calving ease - in the top 5% - with super low birthweight and short gestation. Actual EMA was very strong and he has plenty of rib fat.

Purchaser:

Price: \$

YEARLING ANGUS BULLS

Lot: 60 MEADOWSLEA U527 ^{PV}

Birth Date: 13/10/23 ID No: 19134023527

RANGATIRA 13-38

MEADOWSLEA R650 ^{PV}

MEADOWSLEA H117 ^{SV}

TURIHAUA CRUMP E5 (ET) ^{SV}

MEADOWSLEA H146

MEADOWSLEA F536

INDEXES	
SR	HD
+\$93	+\$101

SEPTEMBER 2024 TRANSTASMAN ANGUS CATTLE EVALUATION

CED	DTRS	GL	BW	200	400	600	MCW	Milk
+2.9	+4.0	-3.1	+4.1	+34	+60	+83	+62	+19
64%	54%	80%	81%	81%	79%	80%	77%	72%

SS	DC	CW	EMA	Rib Fat	Rump	RBY %	IMF %
+1.6	-4.5	+34	-1.4	+2.5	+2.4	-0.3	+2.2
77%	47%	69%	68%	69%	69%	62%	72%

Comments: Deep, strong coated bull with clean shoulders and width across the loin. Out of a top breeding Crump cow who gave us several sale bulls, and going back to the \$100,000 Rangatira 13-38 as well. The key rib fat and days to calving EBVs will take you forward and he has IMF in the top 10% as well! Actual EMA was very good too.

Purchaser:	Price: \$
------------	-----------

Lot: 61 MEADOWSLEA U345 ^{PV}

Birth Date: 25/09/23 ID No: 19134023345

MEADOWSLEA K703 ^{SV}

MEADOWSLEA S273 ^{PV}

MEADOWSLEA K767 ^{SV}

TURIHAUA RHINESTONE P186 ^{PV}

MEADOWSLEA S534 ^{PV}

MEADOWSLEA L111

INDEXES	
SR	HD
+\$121	+\$103

SEPTEMBER 2024 TRANSTASMAN ANGUS CATTLE EVALUATION

CED	DTRS	GL	BW	200	400	600	MCW	Milk
+2.9	+3.8	-3.1	+3.7	+33	+66	+82	+58	+15
51%	41%	59%	72%	66%	63%	63%	62%	55%

SS	DC	CW	EMA	Rib Fat	Rump	RBY %	IMF %
+1.7	-4.4	+32	+1.3	+1.4	+0.9	+0.5	+1.1
58%	36%	54%	54%	57%	56%	51%	57%

Comments: Big barrel on this bull. Thick, deep, square, gutsy type that goes back to Meat Machine, Crump, Reality, and Turihaua Rhino. Low birthweight and calving ease suitable for heifer mating and a self-replacing index in the top 30% of the breed.

Purchaser:	Price: \$
------------	-----------

YEARLING ANGUS BULLS

Lot: 62 MEADOWSLEA U255 PV

Birth Date: 18/09/23 ID No: 19134023255

RANGATIRA 16209 SV

MEADOWSLEA Q178 PV

MEADOWSLEA M475

MEADOWSLEA L141

MEADOWSLEA N193

MEADOWSLEA L079

INDEXES	
SR	HD
+\$154	+\$103

SEPTEMBER 2024 TRANSTASMAN ANGUS CATTLE EVALUATION

CED	DTRS	GL	BW	200	400	600	MCW	Milk
+4.4	+0.0	-6.1	+4.2	+29	+55	+62	+48	+9
61%	50%	79%	81%	81%	79%	79%	76%	70%
SS	DC	CW	EMA	Rib Fat	Rump	RBY %	IMF %	
+3.4	-5.9	+8	+1.4	+1.3	+1.3	+0.7	+1.1	
76%	42%	67%	67%	68%	68%	61%	71%	

Comments: Nice compact, deep bodied, clean shouldered type with a good head and strong hindquarter. A son of Q178 with some Reality on the dam side which should be a good cross. Terrific short gestation, with mature cow weight and the fertility traits of scrotal size and days to calving in the top 5% of the breed - hence the outstandingly good index!

Purchaser:	Price: \$
------------	-----------

Lot: 63 MEADOWSLEA U435 PV

Birth Date: 30/09/23 ID No: 19134023435

RANGATIRA 16209 SV

MEADOWSLEA Q178 PV

MEADOWSLEA M475

MEADOWSLEA L123

MEADOWSLEA N310

MEADOWSLEA L335

INDEXES	
SR	HD
+\$115	+\$83

SEPTEMBER 2024 TRANSTASMAN ANGUS CATTLE EVALUATION

CED	DTRS	GL	BW	200	400	600	MCW	Milk
-1.9	-0.4	-4.6	+4.2	+35	+70	+95	+103	+12
53%	40%	62%	75%	70%	67%	68%	66%	58%
SS	DC	CW	EMA	Rib Fat	Rump	RBY %	IMF %	
+2.5	-6.3	+30	-1.8	+1.7	+1.5	+0.2	+0.3	
61%	37%	57%	57%	59%	59%	54%	59%	

Comments: Another compact, deep bodied bull with a good backend by Q178, with F540 and Goldwyn in there too. Moderate birthweight suitable for heifers with strong scrotal size and days to calving in the top 5% - so plenty of fertility!

Purchaser:	Price: \$
------------	-----------

YEARLING ANGUS BULLS

Lot: 64 MEADOWSLEA U501 ^{PV}

Birth Date: 08/10/23 ID No: 19134023501

RANGATIRA 16209 ^{SV}

MEADOWSLEA Q178 ^{PV}

MEADOWSLEA M475

MEADOWSLEA M429

MEADOWSLEA P589 ^{SV}

MEADOWSLEA M626

INDEXES	
SR	HD
+\$114	+\$86

SEPTEMBER 2024 TRANSTASMAN ANGUS CATTLE EVALUATION

CED	DTRS	GL	BW	200	400	600	MCW	Milk
-1.2	+1.0	-4.0	+4.5	+34	+68	+90	+92	+10
55%	42%	66%	75%	70%	68%	69%	67%	58%
SS	DC	CW	EMA	Rib Fat	Rump	RBY %	IMF %	
+2.6	-5.2	+25	+0.0	+1.3	+0.9	+0.5	+0.3	
64%	37%	59%	58%	60%	60%	55%	61%	

Comments: Another very good Q178 son to start this second mob. Sire-of-dam M429 was a Rangatira 13-38 son sold to Red Oak Stud where he bred well. Great-grandam H126 was a great Crump cow and the mother of stud sire K703. Thick, deep, square type of bull with great head, bone, and very good feet. Real width across the loin and a terrific hindquarter. The key fertility traits of scrotal size and days to calving are both strong and his actual scrotal was right up there. Solid bull.

Purchaser:

Price: \$

Lot: 65 MEADOWSLEA U591 ^{PV}

Birth Date: 29/10/23 ID No: 19134023591

TURIHAUA CRUMP E5 (ET) ^{SV}

MEADOWSLEA N166 ^{SV}

MEADOWSLEA G922 ^{SV}

TURIHAUA LOYALTY L44 (ET)

MEADOWSLEA R691 ^{PV}

MEADOWSLEA G844

INDEXES	
SR	HD
+\$111	+\$74

SEPTEMBER 2024 TRANSTASMAN ANGUS CATTLE EVALUATION

CED	DTRS	GL	BW	200	400	600	MCW	Milk
-4.4	+1.7	-2.9	+5.3	+41	+74	+95	+84	+12
57%	47%	66%	73%	70%	68%	68%	66%	60%
SS	DC	CW	EMA	Rib Fat	Rump	RBY %	IMF %	
+1.1	-4.5	+44	+2.3	+2.3	+1.4	+0.3	+0.5	
66%	45%	60%	60%	62%	62%	57%	63%	

Comments: Another super thick yearling of very similar type, this time a son of the powerful N166. Wonderful hindquarter, big barrel, and terrific width and thickness. The crucial days to calving and rib fat figures are both very strong which are crucial for breeding daughters that will be productive on hill country.

Purchaser:

Price: \$

YEARLING ANGUS BULLS

Lot: 66 MEADOWSLEA U112 PV

Birth Date: 02/09/23 ID No: 19134023112

MEADOWSLEA P700 SV

MEADOWSLEA S184 PV

MEADOWSLEA N475

WOODBANK 7017 SV

MEADOWSLEA S195 PV

MEADOWSLEA K944 SV

INDEXES	
SR	HD
+\$122	+\$106

SEPTEMBER 2024 TRANSTASMAN ANGUS CATTLE EVALUATION

CED	DTRS	GL	BW	200	400	600	MCW	Milk
+7.5	+6.0	-8.0	-0.2	+19	+40	+48	+45	+17
58%	47%	78%	79%	80%	78%	78%	74%	68%

SS	DC	CW	EMA	Rib Fat	Rump	RBY %	IMF %
+2.0	-6.9	-7	+0.5	+5.7	+6.6	-1.5	+5.0
75%	38%	65%	64%	65%	66%	57%	69%

Comments: Nice clean-shouldered, upstanding bull. Very good shape about him with balance, style, and another very good hindquarter. Incredible set of data here - calving ease is in the top 10%, his short gestation is in the top 5%, and he is in the top 1% of the breed for low birthweight, short days to calving, fats, and IMF! Grand-dam K944 was a great Crump cow sold to Alan Fielding in the 2024 female sale and she bred the \$32,000 Q347.

Purchaser:	Price: \$
-------------------	------------------

Lot: 67 MEADOWSLEA U560 PV

Birth Date: 21/10/23 ID No: 19134023560

BASIN RAINMAKER 4404 PV

KINCARDINE RAINSTORME R25 PV

KINCARDINE 17-759

MEADOWSLEA K902

MEADOWSLEA M579

MEADOWSLEA K898 SV

INDEXES	
SR	HD
+\$69	+\$122

SEPTEMBER 2024 TRANSTASMAN ANGUS CATTLE EVALUATION

CED	DTRS	GL	BW	200	400	600	MCW	Milk
+5.3	+2.6	-7.8	+3.3	+40	+75	+100	+82	+28
63%	51%	80%	82%	82%	80%	80%	77%	71%

SS	DC	CW	EMA	Rib Fat	Rump	RBY %	IMF %
+1.5	-2.7	+40	+6.2	+2.1	+1.5	+0.5	+0.7
77%	41%	68%	67%	67%	68%	59%	71%

Comments: A classic Rainstorme son with beautiful clean shoulders, lovely topline, great outlook and style about him. Beautifully balanced with incredible muscle. As always with Rainstorme progeny we get great calving ease and low birthweight. Gestation length is in the best 5%, and milk in the top 1%, so expect tremendously productive daughters and trouble free heifer calving! Carcase data was strong too with good rib fat, EMA in the top 15% of the breed, and actual IMF of 4.5!

Purchaser:	Price: \$
-------------------	------------------

YEARLING ANGUS BULLS

Lot: 68 MEADOWSLEA U400 ^{PV}

Birth Date: 27/09/23 **ID No:** 19134023400

TAIMATE LAZARUS L12 ^{PV}

MEADOWSLEA P565 ^{SV}

MEADOWSLEA G943

TURIHAUA CRUMP E5 (ET) ^{SV}

MEADOWSLEA N341

MEADOWSLEA G931

INDEXES	
SR	HD
+\$116	+\$117

SEPTEMBER 2024 TRANSTASMAN ANGUS CATTLE EVALUATION

CED	DTRS	GL	BW	200	400	600	MCW	Milk
+5.2	+4.8	-7.2	+3.0	+34	+71	+105	+104	+18
64%	55%	80%	81%	82%	80%	80%	77%	72%
SS	DC	CW	EMA	Rib Fat	Rump	RBY %	IMF %	
+3.3	-6.9	+37	-0.2	+4.4	+3.9	-0.2	-0.6	
77%	47%	69%	69%	69%	70%	63%	73%	

Comments: Another nice well-balanced bull with a strong head and clean shoulders. Upstanding, good deep type. Tremendous heifer mating figures again with top calving ease and low birthweight followed by plenty of growth. Fertility is incredible with scrotal size in the top 10%, rib fat in the top 5%, and days to calving in the top 1%! Actual IMF was even better this time at 4.8.

Purchaser:

Price: \$

Lot: 69 MEADOWSLEA U597 ^{PV}

Birth Date: 31/10/23 **ID No:** 19134023597

TAIMATE LAZARUS L12 ^{PV}

MEADOWSLEA P565 ^{SV}

MEADOWSLEA G943

MEADOWSLEA K890 ^{DV}

MEADOWSLEA N110

MEADOWSLEA H118

INDEXES	
SR	HD
+\$126	+\$89

SEPTEMBER 2024 TRANSTASMAN ANGUS CATTLE EVALUATION

CED	DTRS	GL	BW	200	400	600	MCW	Milk
-1.3	+2.3	-6.9	+5.7	+39	+79	+96	+103	+14
63%	52%	81%	81%	82%	80%	80%	77%	72%
SS	DC	CW	EMA	Rib Fat	Rump	RBY %	IMF %	
+2.2	-6.0	+46	+1.7	+0.1	-0.7	+0.7	+0.0	
78%	45%	69%	68%	69%	70%	62%	72%	

Comments: Another clean shouldered bull with a very good topline. Deep, thick, with a strong hindquarter and will develop into a good bull. Short days to calving in the top 5% of the breed and short gestation help boost his index. A top pedigree includes Lazarus, Glanworth 0816, Crump, and F540.

Purchaser:

Price: \$

YEARLING ANGUS BULLS

Lot: 70 MEADOWSLEA U324 ^{PV}

Birth Date: 23/09/23 ID No: 19134023324

MEADOWSLEA L226 ^{SV}

MEADOWSLEA P700 ^{SV}

MEADOWSLEA H117 ^{SV}

MEADOWSLEA J457

MEADOWSLEA L122

MEADOWSLEA J496

INDEXES	
SR	HD
+\$95	+\$114

SEPTEMBER 2024 TRANSTASMAN ANGUS CATTLE EVALUATION

CED	DTRS	GL	BW	200	400	600	MCW	Milk
+6.9	-0.5	-6.3	+1.7	+27	+59	+70	+57	+19
56%	45%	63%	75%	71%	68%	69%	68%	62%
SS	DC	CW	EMA	Rib Fat	Rump	RBY %	IMF %	
+2.2	-4.1	+22	+0.8	+3.4	+2.7	-0.5	+3.2	
64%	42%	60%	59%	61%	61%	56%	61%	

Comments: Clean shouldered, upstanding type with good length about him. As with all these P700s we have terrific calving ease, low birthweight, moderate cow size, big fats and IMF in the top 5% of the breed! Has some Reality in the background on the dam side which doubles-up on all those traits.

Purchaser:

Price: \$

Lot: 71 MEADOWSLEA U423 ^{PV}

Birth Date: 29/09/23 ID No: 19134023423

MEADOWSLEA K904

MEADOWSLEA N119 ^{SV}

MEADOWSLEA E350

MEADOWSLEA F540

MEADOWSLEA M516

MEADOWSLEA J418

INDEXES	
SR	HD
+\$125	+\$104

SEPTEMBER 2024 TRANSTASMAN ANGUS CATTLE EVALUATION

CED	DTRS	GL	BW	200	400	600	MCW	Milk
+4.0	+1.1	-5.9	+3.3	+29	+60	+78	+75	+18
52%	42%	59%	74%	70%	66%	67%	65%	58%
SS	DC	CW	EMA	Rib Fat	Rump	RBY %	IMF %	
+2.4	-6.9	+23	+0.6	+3.3	+3.2	-0.3	+2.1	
60%	42%	58%	55%	58%	57%	53%	57%	

Comments: Good backend on this bull. Deep thick and square with a clean shoulder and plenty of visual muscle. Another with strong calving ease and low birthweight traits, fertility is impressive with strong scrotal size and days to calving in the top 1%! His carcass data indicate progeny will prime up quickly and hit the grade premiums with rib fat in the top 10% and plenty of IMF.

Purchaser:

Price: \$

YEARLING ANGUS BULLS

Lot: 72 MEADOWSLEA U167 ^{PV}

Birth Date: 12/09/23 ID No: 19134023167

MEADOWSLEA K904

MEADOWSLEA N119 ^{SV}

MEADOWSLEA E350

MEADOWSLEA N166 ^{SV}

MEADOWSLEA R896 ^{PV}

MEADOWSLEA M1001

INDEXES	
SR	HD
+\$94	+\$98

SEPTEMBER 2024 TRANSTASMAN ANGUS CATTLE EVALUATION

CED	DTRS	GL	BW	200	400	600	MCW	Milk
+4.1	+3.2	-5.7	+2.9	+25	+49	+67	+57	+18
52%	41%	60%	74%	65%	64%	65%	63%	56%
SS	DC	CW	EMA	Rib Fat	Rump	RBY %	IMF %	
+2.0	-5.3	+18	+0.1	+2.9	+2.5	+0.0	+1.1	
61%	40%	56%	55%	58%	58%	53%	58%	

Comments: Thick, square type bred the same way as the last lot with a similarly strong hindquarter. Strong calving ease, short gestation and low birthweight once again, with moderate cow size and short days to calving indicating cow efficiency, plus rib fat in the top 10%. Grand dam bred Q430, a top bull sold to Hawkdun Pastoral at \$22,000 after garnering some stud interest.

Purchaser:

Price: \$

Lot: 73 MEADOWSLEA U232 ^{PV}

Birth Date: 17/09/23 ID No: 19134023232

TIMPERLEA QUAIN 763 ^{PV}

MEADOWSLEA S108 ^{PV}

MEADOWSLEA Q181 ^{SV}

MEADOWSLEA P525 ^{SV}

MEADOWSLEA S237 ^{PV}

MEADOWSLEA K763

INDEXES	
SR	HD
+\$133	+\$115

SEPTEMBER 2024 TRANSTASMAN ANGUS CATTLE EVALUATION

CED	DTRS	GL	BW	200	400	600	MCW	Milk
+7.3	+1.5	-5.3	+1.5	+31	+63	+73	+63	+17
47%	37%	55%	71%	66%	61%	61%	58%	49%
SS	DC	CW	EMA	Rib Fat	Rump	RBY %	IMF %	
+2.0	-6.3	+23	+1.2	+3.7	+4.1	-0.5	+1.2	
54%	32%	51%	49%	52%	52%	46%	52%	

Comments: Great scope and style about this bull. Clean shoulders, upstanding outlook, and a good back end. Ideal figures for mating heifers once again with outstanding calving ease, low birthweight in the best 5%, and short gestation. Maternal figures are good too with plenty of milk, moderate cow size, and both days to calving and rib fat in the top 5%.

Purchaser:

Price: \$

YEARLING ANGUS BULLS

Lot: 74 MEADOWSLEA U144 ^{PV}

Birth Date: 11/09/23 ID No: 19134023144

TAIMATE L 38 ^{SV}

TAIMATE ROY R38 (ET) ^{PV}

TAIMATE 1506 ^{SV}

GOLDWYN 017 ^{SV}

MEADOWSLEA L323

MEADOWSLEA G860

INDEXES	
SR	HD
+\$135	+\$114

SEPTEMBER 2024 TRANSTASMAN ANGUS CATTLE EVALUATION

CED	DTRS	GL	BW	200	400	600	MCW	Milk
+5.3	+5.5	-5.9	+0.6	+35	+67	+89	+80	+14
60%	47%	67%	75%	71%	69%	68%	67%	60%
SS	DC	CW	EMA	Rib Fat	Rump	RBY %	IMF %	
+2.6	-6.1	+36	-0.3	+3.7	+4.0	-0.3	+1.1	
66%	41%	59%	59%	61%	61%	56%	61%	

Comments: Nice compact son of Taimate Roy. Good balance, style and pullup to this bull. Clean shoulders for heifer mating along with strong calving ease, short gestation, exceptional low birthweight and a smart growth curve. Fertility is strong with ample scrotal size, and both days to calving and rib fat are in the top 5%. His actual IMF was strong too.

Purchaser:

Price: \$

Lot: 75 MEADOWSLEA U321 ^{PV}

Birth Date: 23/09/23 ID No: 19134023321

MEADOWSLEA K904

MEADOWSLEA N119 ^{SV}

MEADOWSLEA E350

RATANUI LAD 21

MEADOWSLEA M522

MEADOWSLEA J402

INDEXES	
SR	HD
+\$108	+\$99

SEPTEMBER 2024 TRANSTASMAN ANGUS CATTLE EVALUATION

CED	DTRS	GL	BW	200	400	600	MCW	Milk
+4.1	+0.2	-5.5	+3.3	+22	+47	+65	+66	+16
50%	40%	55%	74%	69%	66%	66%	65%	56%
SS	DC	CW	EMA	Rib Fat	Rump	RBY %	IMF %	
+1.7	-6.4	+13	+0.3	+2.0	+2.1	+0.3	+1.5	
59%	39%	57%	53%	56%	56%	51%	54%	

Comments: A bit more scope and scale about this fellow. Good length, nice topline, a clean shoulder and good pullup. Low birthweight here again with good calving ease, strong fats and IMF, and days to calving in the top 5% yet again.

Purchaser:

Price: \$

YEARLING ANGUS BULLS

Lot: 76 MEADOWSLEA U209 ^{PV}

Birth Date: 15/09/23 ID No: 19134023209

MEADOWSLEA Q223 ^{PV}

MEADOWSLEA S116 ^{PV}

MEADOWSLEA Q173 ^{PV}

TURIROA PANTHER 18P241 (ET) ^{PV}

MEADOWSLEA S569 ^{PV}

MEADOWSLEA J586

INDEXES	
SR	HD
+\$132	+\$98

SEPTEMBER 2024 TRANSTASMAN ANGUS CATTLE EVALUATION

CED	DTRS	GL	BW	200	400	600	MCW	Milk
+2.3	+1.8	-4.9	+2.2	+29	+65	+76	+65	+18
45%	36%	53%	71%	66%	62%	62%	59%	48%
SS	DC	CW	EMA	Rib Fat	Rump	RBY %	IMF %	
+1.9	-5.7	+30	+1.0	+2.7	+2.8	+0.3	+1.2	
51%	32%	53%	47%	50%	50%	45%	49%	

Comments: Moderate framed, thick type with a strong backend and clean shoulder. Out of a 2-year heifer by a yearling bull so a background of proven trouble-free heifer mating, and positive calving ease and low birthweight as well. Days to calving in the top 10% with big fats and plenty of milk too.

Purchaser:

Price: \$

Lot: 77 MEADOWSLEA U137 ^{PV}

Birth Date: 10/09/23 ID No: 19134023137

TURHAUA APOLLO L383

TURHAUA JUPITER Q353 ^{PV}

TURHAUA L84

GOLDWYN 017 ^{SV}

MEADOWSLEA Q305 ^{PV}

MEADOWSLEA M560

INDEXES	
SR	HD
+\$156	+\$89

SEPTEMBER 2024 TRANSTASMAN ANGUS CATTLE EVALUATION

CED	DTRS	GL	BW	200	400	600	MCW	Milk
+0.2	+2.7	-6.8	+4.8	+29	+65	+82	+81	+13
64%	53%	80%	82%	82%	80%	81%	78%	72%
SS	DC	CW	EMA	Rib Fat	Rump	RBY %	IMF %	
+0.2	-8.3	+37	+3.7	+2.2	+2.0	+0.6	-0.3	
78%	45%	70%	69%	69%	70%	62%	74%	

Comments: Very good hindquarter on this thick, square, solid type of bull. A son of Turihaua Jupiter, whose sons were such a feature in the 2024 winter sale. His mother bred S132, a stud bull transferred to Martin Farming where he has done very well. EBVs show short gestation, days to calving in the top 1% of the breed, strong fats and an index in the top 5%!

Purchaser:

Price: \$

YEARLING ANGUS BULLS

Lot: 78 MEADOWSLEA U257 ^{PV}

Birth Date: 19/09/23 ID No: 19134023257

TURIHAUA APOLLO L383

TURIHAUA JUPITER Q353 ^{PV}

TURIHAUA L84

MEADOWSLEA L226 ^{SV}

MEADOWSLEA Q289 ^{PV}

MEADOWSLEA L205

INDEXES	
SR	HD
+\$157	+\$108

SEPTEMBER 2024 TRANSTASMAN ANGUS CATTLE EVALUATION

CED	DTRS	GL	BW	200	400	600	MCW	Milk
+6.5	+3.8	-8.7	+1.5	+18	+43	+46	+42	+13
62%	51%	79%	81%	81%	79%	79%	76%	70%
SS	DC	CW	EMA	Rib Fat	Rump	RBV %	IMF %	
+1.6	-6.3	+0	+8.2	+4.5	+4.8	+1.4	-0.9	
76%	44%	67%	67%	68%	68%	61%	71%	

Comments: Similar type by the same sire with a good hindquarter. Thick and square with clean shoulders and good calving ease figures. Short gestation and low birthweight are in the top 5%, as are his days to calving, rib fat, rump fat, and self-replacing index figures! His actual EMA was exceptional and he scanned very well for actual IMF.

Purchaser:

Price: \$

Lot: 79 MEADOWSLEA U151 ^{PV}

Birth Date: 11/09/23 ID No: 19134023151

BASIN RAINMAKER 4404 ^{PV}

KINCARDINE RAINSTORME R25 ^{PV}

KINCARDINE 17-759

MEADOWSLEA Q272 ^{PV}

MEADOWSLEA S515 ^{PV}

MEADOWSLEA H320

INDEXES	
SR	HD
+\$142	+\$120

SEPTEMBER 2024 TRANSTASMAN ANGUS CATTLE EVALUATION

CED	DTRS	GL	BW	200	400	600	MCW	Milk
+8.7	+3.4	-6.3	+2.4	+24	+47	+52	+1	+29
62%	49%	80%	81%	82%	79%	80%	76%	70%
SS	DC	CW	EMA	Rib Fat	Rump	RBV %	IMF %	
+4.1	-5.7	+9	+9.9	+3.6	+5.0	+0.4	+2.0	
76%	38%	67%	66%	67%	67%	58%	70%	

Comments: Another classic Rainstorme son out of a 2-year heifer. Crump, Meat Machine, and Highlander of Stern all feature in the pedigree. Clean cut, stylish, and beautifully balanced with a terrific shoulder- worth a good look. Calving ease direct is in the top 5% of the breed with short gestation and low birthweight. EBV for days to calving is in the top 10%, while scrotal size, EMA, rib fat, and rump fat are in the top 5% and milk the top 1%! Has IMF as well with an actual scan of 5.7! As we would expect that's a very strong index.

Purchaser:

Price: \$



Rural Livestock

Looking for stock?

Let our network
of over 45 agents
help you source the
stock you need.



Talk to your local Rural Livestock agent today.

Genetics Specialist:

Anthony Cox - 0272 083 071

Livestock Agents:

Aaron McCall - 0276 855 702

Donald Cooke - 0274 730 854

Quinten Botha - 0274 730 885

John Harrison - 0272 262 964

www.rurallivestock.co.nz

YEARLING ANGUS BULLS

Lot: 80 MEADOWSLEA U335 ^{PV}

Birth Date: 24/09/23 ID No: 19134023335

RANGATIRA 16209 ^{SV}

MEADOWSLEA Q178 ^{PV}

MEADOWSLEA M475

MEADOWSLEA E346

MEADOWSLEA G931

MEADOWSLEA E453

INDEXES	
SR	HD
+\$81	+\$64

SEPTEMBER 2024 TRANSTASMAN ANGUS CATTLE EVALUATION

CED	DTRS	GL	BW	200	400	600	MCW	Milk
-4.1	-2.9	-1.0	+5.7	+26	+55	+66	+73	+18
63%	50%	80%	82%	82%	80%	80%	77%	72%
SS	DC	CW	EMA	Rib Fat	Rump	RBV %	IMF %	
+1.5	-4.4	+15	+1.0	+0.9	+1.2	+1.0	-0.3	
77%	44%	68%	67%	68%	69%	62%	72%	

Comments: Very deep bodied Q178 son with great head and bone, lovely hindquarter, and strong coat. An impressive bull out of a good old cow who was 12 years old at calving and produced 4 good sale bulls over the years.

Purchaser:

Price: \$

Lot: 81 MEADOWSLEA U284 ^{PV}

Birth Date: 20/09/23 ID No: 19134023284

TURIROA PANTHER 18P241 (ET) ^{PV}

MEADOWSLEA S186 ^{PV}

MEADOWSLEA H140 ^{SV}

MEADOWSLEA P593 ^{SV}

MEADOWSLEA S166 ^{PV}

MEADOWSLEA L154

INDEXES	
SR	HD
+\$120	+\$94

SEPTEMBER 2024 TRANSTASMAN ANGUS CATTLE EVALUATION

CED	DTRS	GL	BW	200	400	600	MCW	Milk
+0.8	+0.4	-3.8	+3.8	+37	+68	+87	+65	+18
44%	35%	50%	71%	65%	61%	60%	57%	47%
SS	DC	CW	EMA	Rib Fat	Rump	RBV %	IMF %	
+2.2	-5.3	+38	+1.4	+3.9	+3.8	-0.5	+2.2	
54%	31%	51%	46%	50%	49%	45%	48%	

Comments: Clean shouldered, upstanding bull with a great topline and another good hindquarter. Real easy-fleshing type out of a 2-year heifer by a yearling son of Panther. Sire of dam P593 was sold to Cricklewood Angus for \$32,000. Has low birthweight suitable for heifers with short days to calving, plenty of IMF, and rib fat in the top 5% of the breed indicating easy doing. Actual scanning was very impressive with a top EMA for weight and good marbling.

Purchaser:

Price: \$

YEARLING ANGUS BULLS

Lot: 82 MEADOWSLEA U588 ^{PV}

Birth Date: 27/10/23 ID No: 19134023588

MEADOWSLEA K904

MEADOWSLEA N119 ^{SV}

MEADOWSLEA E350

MEADOWSLEA N141

MEADOWSLEA Q310 ^{PV}

MEADOWSLEA M674

INDEXES	
SR	HD
+\$117	+\$97

SEPTEMBER 2024 TRANSTASMAN ANGUS CATTLE EVALUATION

CED	DTRS	GL	BW	200	400	600	MCW	Milk
+3.0	+0.7	-4.6	+2.8	+26	+55	+75	+59	+20
63%	51%	80%	81%	82%	80%	80%	77%	71%
SS	DC	CW	EMA	Rib Fat	Rump	RBY %	IMF %	
+1.8	-7.1	+32	-1.8	+0.2	+1.1	+0.1	+1.6	
77%	45%	68%	68%	69%	69%	62%	72%	

Comments: Solid, thick-set bull here with a deep body and terrific hindquarter. Good square type of bull. Sire of dam N141 was double-bred Braveheart and was sold to Waimara Angus where he has had a big impact. Very good low birthweight, his milk figure is in the top 10%, days to calving in the top 1% again and plenty of IMF with a top marbling scan.

Purchaser:

Price: \$

Lot: 83 MEADOWSLEA U323 ^{PV}

Birth Date: 23/09/23 ID No: 19134023323

TURIHAUA APOLLO L383

TURIHAUA JUPITER Q353 ^{PV}

TURIHAUA L84

MEADOWSLEA J479

MEADOWSLEA N430

MEADOWSLEA H167

INDEXES	
SR	HD
+\$137	+\$73

SEPTEMBER 2024 TRANSTASMAN ANGUS CATTLE EVALUATION

CED	DTRS	GL	BW	200	400	600	MCW	Milk
-1.1	-2.1	-2.7	+4.5	+23	+47	+58	+48	+10
54%	43%	60%	75%	70%	66%	67%	66%	58%
SS	DC	CW	EMA	Rib Fat	Rump	RBY %	IMF %	
+1.9	-6.7	+13	+0.4	+2.1	+2.9	+0.5	+0.4	
62%	39%	58%	57%	59%	59%	54%	59%	

Comments: Another moderate framed, very well-balanced bull with a strong hindquarter, good shoulder, and deep body. A smooth easy-doing type by Jupiter. Outstanding fertility with days to calving in the top 1% of the breed again, strong fats, and a good self-replacing index.

Purchaser:

Price: \$

YEARLING ANGUS BULLS

Lot: 84 MEADOWSLEA U316 ^{PV}

Birth Date: 02/09/23 ID No: 19134023316

MEADOWSLEA MEAT MACHINE G914 ^{SV}

MEADOWSLEA R818 ^{PV}

MEADOWSLEA N108

MEADOWSLEA M565

MEADOWSLEA P511 ^{SV}

MEADOWSLEA M469

INDEXES	
SR	HD
+\$147	+\$86

SEPTEMBER 2024 TRANSTASMAN ANGUS CATTLE EVALUATION

CED	DTRS	GL	BW	200	400	600	MCW	Milk
+0.2	+4.9	-7.7	+2.1	+28	+56	+73	+51	+16
65%	52%	81%	82%	82%	80%	80%	77%	71%
SS	DC	CW	EMA	Rib Fat	Rump	RBY %	IMF %	
+3.8	-7.1	+23	+0.5	+2.0	+2.7	+0.3	+1.2	
77%	44%	69%	67%	68%	69%	61%	72%	

Comments: An solid R818 son with good length and topline. Exceptional short gestation in the top 5%, with very low birthweight, moderate cow size, and good milk. Terrific fertility with scrotal size in the top 5% and days to calving the top 1%! A good actual EMA scan with plenty of fat on him and a bit of IMF - giving another very good SRI.

Purchaser:

Price: \$

Lot: 85 MEADOWSLEA U298 ^{PV}

Birth Date: 21/09/23 ID No: 19134023298

MEADOWSLEA K703 ^{SV}

MEADOWSLEA S273 ^{PV}

MEADOWSLEA K767 ^{SV}

MEADOWSLEA P565 ^{SV}

MEADOWSLEA S282 ^{PV}

MEADOWSLEA P600 ^{SV}

INDEXES	
SR	HD
+\$123	+\$104

SEPTEMBER 2024 TRANSTASMAN ANGUS CATTLE EVALUATION

CED	DTRS	GL	BW	200	400	600	MCW	Milk
+4.9	+3.9	-3.7	+1.9	+25	+53	+67	+49	+14
52%	43%	61%	72%	67%	64%	64%	62%	55%
SS	DC	CW	EMA	Rib Fat	Rump	RBY %	IMF %	
+1.7	-5.5	+22	+0.0	+2.7	+1.8	+0.3	+1.0	
59%	37%	55%	55%	57%	57%	51%	58%	

Comments: Clean shouldered, long-bodied bull with nice balance about him. Out of a 2-year heifer and ideal for mating heifers himself with great calving ease and very low birthweight. Days to calving is very good once again with plenty of fat and a top actual IMF scan.

Purchaser:

Price: \$

YEARLING ANGUS BULLS

Lot: 86 MEADOWSLEA U586 ^{PV}

Birth Date: 25/10/23 ID No: 19134023586

GOLDWYN H817 ^{SV}

TURIROA PANTHER 18P241 (ET) ^{PV}

TURIROA L120 (ET)

MEADOWSLEA P565 ^{SV}

MEADOWSLEA R608 ^{PV}

MEADOWSLEA P775 ^{SV}

INDEXES	
SR	HD
+\$148	+\$95

SEPTEMBER 2024 TRANSTASMAN ANGUS CATTLE EVALUATION

CED	DTRS	GL	BW	200	400	600	MCW	Milk
+1.0	+2.4	-4.6	+3.6	+34	+71	+84	+66	+14
51%	42%	59%	73%	69%	65%	66%	64%	54%
SS	DC	CW	EMA	Rib Fat	Rump	RBY %	IMF %	
+1.8	-5.7	+37	+2.0	+3.8	+4.1	+0.0	+1.0	
59%	36%	56%	54%	56%	56%	52%	55%	

Comments: A Panther son with a bit of scale about him. Pedigree also includes Lazarus, Crump, and Kaharau Prince. Nice length, good topline, and clean shoulders. Low birthweight suitable for heifers here too. Days to calving in the top 10% with rib fat in the top 5% ensure productive female progeny - as reflected in that self-replacing index of 148!

Purchaser:

Price: \$

Lot: 87 MEADOWSLEA U506 ^{PV}

Birth Date: 09/10/23 ID No: 19134023506

RANGATIRA 16209 ^{SV}

MEADOWSLEA S178 ^{PV}

MEADOWSLEA L327

MEADOWSLEA MEAT MACHINE G914 ^{SV}

MEADOWSLEA S324 ^{PV}

MEADOWSLEA P893 ^{SV}

INDEXES	
SR	HD
+\$147	+\$115

SEPTEMBER 2024 TRANSTASMAN ANGUS CATTLE EVALUATION

CED	DTRS	GL	BW	200	400	600	MCW	Milk
+7.1	+5.7	-5.2	+0.6	+25	+55	+68	+45	+17
43%	34%	49%	70%	64%	60%	59%	57%	46%
SS	DC	CW	EMA	Rib Fat	Rump	RBY %	IMF %	
+2.4	-6.1	+24	+3.6	+4.6	+5.3	+0.2	+0.7	
51%	33%	51%	45%	48%	48%	45%	46%	

Comments: Very strong hindquarter on this chap. Good topline, clean through the shoulder, and a good muscle pattern. Sire S178 was an immaculately sound bull we used as a yearling before he was sold to Greg Hand, and dam was a 2-year heifer. Grand dam is a beautiful Crump cow and the mother of T172, sold at lot 1 in the 2024 Bull Sale to Glen R Angus. Calving ease and short gestation are very good, while low birthweight is in the best 5% ensuring trouble-free calving. Milk and scrotal size are strong, while days to calving, rib fat, and rump fat are all in the top 5% as well! As you would expect that gets him a top SRI.

Purchaser:

Price: \$

YEARLING ANGUS BULLS

Lot: 88 MEADOWSLEA U455 ^{PV}

Birth Date: 01/10/23 ID No: 19134023455

MEADOWSLEA P700 ^{SV}

MEADOWSLEA S293 ^{PV}

MEADOWSLEA P769 ^{SV}

TURIHAUA RHINESTONE P186 ^{PV}

MEADOWSLEA S423 ^{PV}

MEADOWSLEA P552 ^{SV}

INDEXES	
SR	HD
+\$122	+\$71

SEPTEMBER 2024 TRANSTASMAN ANGUS CATTLE EVALUATION

CED	DTRS	GL	BW	200	400	600	MCW	Milk
-2.9	+1.1	-3.1	+4.6	+32	+60	+67	+63	+13
60%	48%	78%	79%	80%	77%	78%	74%	68%
SS	DC	CW	EMA	Rib Fat	Rump	RBV %	IMF %	
+2.6	-5.0	+10	+3.8	+2.1	+2.8	+0.2	+1.4	
75%	38%	65%	64%	66%	66%	57%	70%	

Comments: Solid, deep, square type here out of a 2-year heifer. Good head and bone with a clean shoulder. Great fertility with days to calving and scrotal size right up there, good EMA, big fats, and the strong IMF we always get from grandsire P700.

Purchaser:

Price: \$

Lot: 89 MEADOWSLEA U429 ^{PV}

Birth Date: 29/09/23 ID No: 19134023429

TIMPERLEA QUAIN 763 ^{PV}

MEADOWSLEA S108 ^{PV}

MEADOWSLEA Q181 ^{SV}

MEADOWSLEA Q290 ^{SV}

MEADOWSLEA S123 ^{PV}

MEADOWSLEA Q353 ^{PV}

INDEXES	
SR	HD
+\$160	+\$103

SEPTEMBER 2024 TRANSTASMAN ANGUS CATTLE EVALUATION

CED	DTRS	GL	BW	200	400	600	MCW	Milk
+5.2	+4.3	-4.3	+1.9	+26	+54	+55	+46	+10
59%	47%	78%	79%	80%	77%	78%	74%	67%
SS	DC	CW	EMA	Rib Fat	Rump	RBV %	IMF %	
+1.9	-6.3	+13	+2.9	+2.5	+3.4	+0.2	+1.2	
74%	37%	64%	63%	65%	65%	56%	68%	

Comments: Very similar type, very square, correct, and well put together. Out of a well-bred 2-year heifer. Good calving ease with low birthweight in the best 10%, days to calving in the top 5%, big fats, and an incredible self-replacing index of \$160!

Purchaser:

Price: \$

YEARLING ANGUS BULLS

Lot: 90 MEADOWSLEA U520 ^{PV}

Birth Date: 10/10/23 **ID No:** 19134023520

RANGATIRA 13-38

MEADOWSLEA R650 ^{PV}

MEADOWSLEA H117 ^{SV}

MEADOWSLEA F540

MEADOWSLEA K853 ^{SV}

MEADOWSLEA D188

INDEXES	
SR	HD
+\$85	+\$88

SEPTEMBER 2024 TRANSTASMAN ANGUS CATTLE EVALUATION

CED	DTRS	GL	BW	200	400	600	MCW	Milk
+0.6	-0.4	-2.9	+4.8	+32	+62	+79	+63	+17
53%	43%	59%	74%	69%	65%	66%	64%	58%

SS	DC	CW	EMA	Rib Fat	Rump	RBY %	IMF %
+1.9	-3.5	+32	-0.3	+3.3	+3.7	-0.5	+1.7
59%	42%	57%	54%	56%	56%	52%	56%

Comments: Clean shouldered, deep bodied bull. By a son of Rangatira 13-38 and out of a top F540 daughter who was sold in the female sale earlier this year to Sarah Catherwood after breeding some top sale bulls. Moderate cow size with plenty of milk, fats in the top 10% of the breed, and plenty of IMF in his EBVs.

Purchaser:	Price: \$
-------------------	------------------

Lot: 91 MEADOWSLEA U394 ^{PV}

Birth Date: 27/09/23 **ID No:** 19134023394

MEADOWSLEA Q223 ^{PV}

MEADOWSLEA S160 ^{PV}

MEADOWSLEA Q498 ^{PV}

MEADOWSLEA Q141 ^{PV}

MEADOWSLEA S265 ^{PV}

MEADOWSLEA K710 ^{SV}

INDEXES	
SR	HD
+\$121	+\$90

SEPTEMBER 2024 TRANSTASMAN ANGUS CATTLE EVALUATION

CED	DTRS	GL	BW	200	400	600	MCW	Milk
+1.4	-0.8	-3.5	+2.7	+30	+60	+75	+54	+18
50%	40%	60%	72%	67%	64%	64%	62%	55%

SS	DC	CW	EMA	Rib Fat	Rump	RBY %	IMF %
+2.5	-6.0	+20	-1.6	+3.8	+4.0	-0.6	+1.9
59%	34%	55%	54%	57%	56%	51%	58%

Comments: A bit more scale and stretch about this fellow. A nice upstanding bull and very clean through the shoulder. By our 2023 keeper bull S160 and out of a 2-year heifer by Q141, the bull sold to Glanworth Angus. Grandmother K710 was the mother of stud sire Q250 and sold in our 2024 female sale to Alan Feilding. Low birthweight makes him ideal for heifer mating, with plenty of fertility - big scrotal EBV with days to calving and rib fat in the top 5%. Heaps of IMF as well with a good actual marbling scan to back that up.

Purchaser:	Price: \$
-------------------	------------------

YEARLING ANGUS BULLS

Lot: 92 MEADOWSLEA U199 ^{PV}

Birth Date: 15/09/23 ID No: 19134023199

MEADOWSLEA MEAT MACHINE G914 ^{SV}

MEADOWSLEA R818 ^{PV}

MEADOWSLEA N108

TURIROA 14830 (ET) ^{SV}

MEADOWSLEA P702 ^{SV}

MEADOWSLEA L117

INDEXES	
SR	HD
+\$142	+\$99

SEPTEMBER 2024 TRANSTASMAN ANGUS CATTLE EVALUATION

CED	DTRS	GL	BW	200	400	600	MCW	Milk
+0.8	+1.8	-3.0	+4.4	+29	+67	+87	+71	+16
64%	52%	80%	81%	82%	79%	80%	76%	70%
SS	DC	CW	EMA	Rib Fat	Rump	RBY %	IMF %	
+2.7	-5.1	+43	+6.2	+2.8	+4.0	+1.4	-0.9	
76%	44%	68%	67%	68%	68%	61%	71%	

Comments: Similar type with plenty of frame and a strong back end. Moderate birthweight, short days to calving, and some carcass data with that big EMA and top fats. Sire R818 is the Meat Machine son to Australia while mother P702 bred a top bull in the 2023 offering.

Purchaser:

Price: \$

Lot: 93 MEADOWSLEA U354 ^{PV}

Birth Date: 25/09/23 ID No: 19134023354

RANGATIRA 16209 ^{SV}

MEADOWSLEA Q178 ^{PV}

MEADOWSLEA M475

MEADOWSLEA MEAT MACHINE G914 ^{SV}

MEADOWSLEA N336

MEADOWSLEA G1023

INDEXES	
SR	HD
+\$88	+\$112

SEPTEMBER 2024 TRANSTASMAN ANGUS CATTLE EVALUATION

CED	DTRS	GL	BW	200	400	600	MCW	Milk
+6.6	+3.2	-2.8	+1.8	+23	+52	+68	+67	+12
62%	50%	80%	81%	82%	80%	80%	77%	71%
SS	DC	CW	EMA	Rib Fat	Rump	RBY %	IMF %	
+3.2	-3.5	+17	+0.6	+1.3	+0.3	+0.8	+0.4	
77%	43%	68%	68%	69%	69%	62%	72%	

Comments: Classic Q178 son with a very strong hindquarter, lovely quality head and bone. Good thick solid bull. Meat Machine on the dam side makes him ideal for heifers with top calving ease, low birthweight in the best 10% of the breed, and massive scrotal EBV too.

Purchaser:

Price: \$

YEARLING ANGUS BULLS

Lot: 94 MEADOWSLEA U578 ^{PV}

Birth Date: 23/10/23 ID No: 19134023578

TE MANIA INFINITY 04 379

GOLDWYN 017 ^{SV}

GOLDWYN 05-595

RATANUI NUGGET 605

MEADOWSLEA R931 ^{PV}

MEADOWSLEA M626

INDEXES	
SR	HD
+\$175	+\$95

SEPTEMBER 2024 TRANSTASMAN ANGUS CATTLE EVALUATION

CED	DTRS	GL	BW	200	400	600	MCW	Milk
+0.3	+0.4	-6.6	+3.1	+35	+71	+93	+69	+15
67%	58%	81%	82%	83%	81%	82%	79%	75%
SS	DC	CW	EMA	Rib Fat	Rump	RBY %	IMF %	
+4.3	-9.0	+28	+0.6	+2.6	+1.3	-0.5	+3.9	
79%	53%	72%	71%	71%	72%	65%	75%	

Comments: Exceptional heifer mating figures on this Goldwyn son, out of a daughter of Ratanui Nugget. Clean shoulders, great topline, and incredible IMF! Scrotal size, days to calving, and self-replacing index are in the top 1% as well! He has very short gestation and low birthweight followed by a sharp growth curve.

Purchaser:

Price: \$

Lot: 95 MEADOWSLEA U341 ^{PV}

Birth Date: 24/09/23 ID No: 19134023341

MEADOWSLEA F540

MEADOWSLEA M564 ^{SV}

MEADOWSLEA G1000 ^{SV}

MEADOWSLEA P539 ^{SV}

MEADOWSLEA R828 ^{PV}

MEADOWSLEA J551 ^{SV}

INDEXES	
SR	HD
+\$137	+\$74

SEPTEMBER 2024 TRANSTASMAN ANGUS CATTLE EVALUATION

CED	DTRS	GL	BW	200	400	600	MCW	Milk
-3.4	-2.2	-4.4	+3.7	+33	+67	+84	+76	+11
56%	45%	65%	69%	69%	68%	68%	68%	60%
SS	DC	CW	EMA	Rib Fat	Rump	RBY %	IMF %	
+2.1	-6.3	+27	+1.6	+4.0	+3.6	-0.2	+1.7	
65%	44%	59%	59%	61%	61%	56%	61%	

Comments: Very tidy M564 son here. Lovely square type, deep and thick with a good hindquarter. Low birthweight suitable for heifers, with short days to calving and rib fat in the top 5% of the breed and plenty of IMF too!

Purchaser:

Price: \$

YEARLING ANGUS BULLS

Lot: 96 MEADOWSLEA U550 ^{PV}

Birth Date: 16/10/23 ID No: 19134023550

RANGATIRA 13-38

MEADOWSLEA R650 ^{PV}

MEADOWSLEA H117 ^{SV}

TURIHAUA CRUMP E5 (ET) ^{SV}

MEADOWSLEA J648

MEADOWSLEA B621

INDEXES	
SR	HD
+\$82	+\$81

SEPTEMBER 2024 TRANSTASMAN ANGUS CATTLE EVALUATION

CED	DTRS	GL	BW	200	400	600	MCW	Milk
-0.1	+0.3	-3.5	+4.6	+27	+52	+69	+61	+12
53%	44%	59%	74%	69%	65%	65%	63%	58%
SS	DC	CW	EMA	Rib Fat	Rump	RBY %	IMF %	
+1.4	-4.0	+21	-1.0	+1.4	+0.5	+0.1	+1.8	
58%	41%	57%	54%	56%	56%	52%	57%	

Comments: Another thick, square, deep-bodied type with clean shoulders and a strong head. Goes back to Rangatira 1338 and out of a Turihaua Crump cow who did the full 10 calves in 10 years on our hill country. Moderate cow size and plenty of IMF on paper here.

Purchaser:

Price: \$

Lot: 97 MEADOWSLEA U325 ^{PV}

Birth Date: 23/09/23 ID No: 19134023325

MEADOWSLEA L226 ^{SV}

MEADOWSLEA P700 ^{SV}

MEADOWSLEA H117 ^{SV}

MEADOWSLEA M444

MEADOWSLEA P658 ^{SV}

MEADOWSLEA E426

INDEXES	
SR	HD
+\$85	+\$105

SEPTEMBER 2024 TRANSTASMAN ANGUS CATTLE EVALUATION

CED	DTRS	GL	BW	200	400	600	MCW	Milk
+4.4	-1.5	-5.3	+3.0	+29	+57	+75	+53	+21
54%	44%	61%	75%	70%	67%	68%	67%	60%
SS	DC	CW	EMA	Rib Fat	Rump	RBY %	IMF %	
+3.0	-4.0	+20	+1.7	+2.8	+2.1	-0.1	+1.9	
63%	41%	58%	57%	60%	60%	54%	59%	

Comments: A nice, square, thick type of bull with clean shoulders and a good topline. Like all these P700s he has calving ease, short gestation, and low birthweight. Goes back to a top F540 daughter H134 who bred a stud bull to Turihaua Angus and was herself sold for transfer to Albert Hill Angus as a 10-year-old. Mature cow weight and milk EBVs are in the best 5% and scrotal is also very strong, while fats and IMF are very good too.

Purchaser:

Price: \$

YEARLING ANGUS BULLS

Lot: 98 MEADOWSLEA U559^{PV}

Birth Date: 21/10/23 **ID No:** 19134023559

MEADOWSLEA K904

MEADOWSLEA N119^{SV}

MEADOWSLEA E350

GOLDWYN 017^{SV}

MEADOWSLEA K012^{SV}

MEADOWSLEA B716

INDEXES	
SR	HD
+\$108	+\$96

SEPTEMBER 2024 TRANSTASMAN ANGUS CATTLE EVALUATION

CED	DTRS	GL	BW	200	400	600	MCW	Milk
+2.8	+1.1	-4.6	+3.4	+27	+52	+72	+70	+17
52%	42%	56%	75%	70%	67%	67%	65%	59%

SS	DC	CW	EMA	Rib Fat	Rump	RBY %	IMF %
+2.0	-6.5	+18	-0.4	+1.5	+1.5	+0.1	+1.9
60%	42%	58%	54%	57%	56%	52%	56%

Comments: Upstanding type here with clean shoulders and a bit of scale about him. Out of a good old Goldwyn cow who did the full 10 years for us with decent calves every year. Calving ease and low birthweight make him ideal for heifer mating again, while the days to calving figure is in the top 5% and the Goldwyn in the background means good IMF.

Purchaser:

Price: \$

Lot: 99 MEADOWSLEA U305^{PV}

Birth Date: 21/09/23 **ID No:** 19134023305

MEADOWSLEA MEAT MACHINE G914^{SV}

MEADOWSLEA R818^{PV}

MEADOWSLEA N108

MEADOWSLEA L226^{SV}

MEADOWSLEA P653^{SV}

MEADOWSLEA G851

INDEXES	
SR	HD
+\$114	+\$105

SEPTEMBER 2024 TRANSTASMAN ANGUS CATTLE EVALUATION

CED	DTRS	GL	BW	200	400	600	MCW	Milk
+4.4	+1.8	-5.2	+2.0	+29	+62	+76	+58	+17
57%	45%	64%	75%	71%	67%	68%	67%	59%

SS	DC	CW	EMA	Rib Fat	Rump	RBY %	IMF %
+3.1	-4.7	+29	-0.4	+1.8	+2.3	+0.2	+0.5
62%	42%	59%	57%	60%	60%	55%	60%

Comments: Deep bodied R818 son with a strong coat and good barrel about him. Heifer mating figures here too with calving ease, short gestation, and low birthweight in the top 10%. Nice moderate cow size, scrotal EBV in the top 10%, short days to calving indicating fertility, and good fats.

Purchaser:

Price: \$

YEARLING ANGUS BULLS

Lot: 100 MEADOWSLEA U566 ^{PV}

Birth Date: 17/10/23 ID No: 19134023566

MEADOWSLEA N166 ^{SV}

MEADOWSLEA S454 ^{PV}

MEADOWSLEA G920

MEADOWSLEA M564 ^{SV}

MEADOWSLEA R719 ^{PV}

MEADOWSLEA N263

INDEXES	
SR	HD
+\$115	+\$92

SEPTEMBER 2024 TRANSTASMAN ANGUS CATTLE EVALUATION

CED	DTRS	GL	BW	200	400	600	MCW	Milk
+0.6	-1.7	-4.0	+3.9	+31	+62	+81	+75	+15
47%	38%	54%	71%	65%	61%	60%	58%	50%
SS	DC	CW	EMA	Rib Fat	Rump	RBY %	IMF %	
+1.9	-5.3	+24	+3.9	+3.2	+2.7	+0.4	+1.0	
56%	36%	51%	49%	52%	52%	48%	51%	

Comments: Good square, deep-bodied type of bull with plenty of width across the top and clean shoulders. Later born out of a good M564 cow who returned after AI. Low birthweight suitable for heifers with a bit more growth. The crucial days to calving figure is short and rib fat is in the top 10%.

Purchaser:

Price: \$

Lot: 101 MEADOWSLEA U358 ^{PV}

Birth Date: 25/09/23 ID No: 19134023358

RANGATIRA 16209 ^{SV}

MEADOWSLEA Q178 ^{PV}

MEADOWSLEA M475

GLANWORTH WAIGROUP 0816 ^{SV}

MEADOWSLEA L187

MEADOWSLEA A353

INDEXES	
SR	HD
+\$98	+\$93

SEPTEMBER 2024 TRANSTASMAN ANGUS CATTLE EVALUATION

CED	DTRS	GL	BW	200	400	600	MCW	Milk
+1.1	-0.3	-3.7	+3.3	+30	+63	+84	+78	+11
56%	45%	69%	75%	71%	69%	70%	68%	61%
SS	DC	CW	EMA	Rib Fat	Rump	RBY %	IMF %	
+2.4	-4.0	+26	+0.2	+1.0	+0.8	+0.6	+0.0	
65%	40%	60%	59%	62%	62%	57%	62%	

Comments: Another of these good Q178 sons, always deep and square with good heads. Low birthweight and clean shoulders ideal for heifers with good scrotal size. Mother is a good old cow who will come forward for the female sale as a 10-year-old in 2025.

Purchaser:

Price: \$

YEARLING ANGUS BULLS

Lot: 102 MEADOWSLEA U363^{SV}

Birth Date: 25/09/23 **ID No:** 19134023363

RANGATIRA 16209^{SV}

MEADOWSLEA Q178^{PV}

MEADOWSLEA M475

MEADOWSLEA M648

MEADOWSLEA Q247^{PV}

MEADOWSLEA G1026

INDEXES	
SR	HD
+\$102	+\$81

SEPTEMBER 2024 TRANSTASMAN ANGUS CATTLE EVALUATION

CED	DTRS	GL	BW	200	400	600	MCW	Milk
-1.9	-1.5	-2.1	+4.5	+33	+68	+88	+103	+12
53%	41%	68%	74%	69%	66%	67%	65%	56%
SS	DC	CW	EMA	Rib Fat	Rump	RBY %	IMF %	
+1.8	-5.2	+26	+0.3	+1.5	+1.6	+0.4	+0.4	
62%	36%	57%	56%	59%	59%	54%	59%	

Comments: Another tidy Q178 to finish on, with a good backend and width across the top. He will develop into a very good bull. Sire of dam M648 was sold at lot 1 in the 2018 Bull Sale to Okaka Angus, and the dam bred a full brother featured at lot 28 in the 2024 Bull Sale being bought by Hamish Blakely. Moderate birthweight with a very good short days to calving figure.

Purchaser:

Price: \$



High Survival, High Performance Romneys
Plus new Worm resistant line!



1/2 Perendale x 1/2 Romney (Romdale)
1/4 Perendale x 1/4 Texel x 1/2 Romney



1/2 Romney & 1/2 Texel
3/4 Romney & 1/4 Texel



K X Romney (1/2 composite x 1/2 Romney)



Terminator tough hill-bred sire



K Maternal hill-bred composite



MEADOWSLEA
ANGUS & SHEEP GENETICS



31 YEARS UNSHEPHERDED ON HILL-COUNTRY

RAM SALE

350 RAMS

Thursday November 28th 12:30pm
Helmsman Auction

On-farm and Online through [yourbid](http://yourbid.com)
Register NOW at www.meadowslea.co.nz

to win a \$2000 Ram!

David Giddings 027 2299760
George Giddings 027 656 3323
giddingsfamily@xtra.co.nz



2 YEAR OLDS

TAG	LOT	TAG	LOT
123.....	15	416.....	20
130.....	23	430.....	24
193.....	4	433.....	2
206.....	1	434.....	14
225.....	22	454.....	26
228.....	25	457.....	16
260.....	21	471.....	13
271.....	19	516.....	12
348.....	9	518.....	10
362.....	17	531.....	8
382.....	7	535.....	18
393.....	6	557.....	5
395.....	11	566.....	27
400.....	3		

YEARLINGS

TAG	LOT	TAG	LOT
101.....	36	334.....	55
104.....	43	335.....	80
112.....	66	338.....	28
114.....	47	341.....	95
123.....	29	345.....	61
124.....	34	354.....	93
135.....	45	358.....	101
137.....	77	363.....	102
144.....	74	376.....	56
151.....	79	384.....	33
153.....	37	386.....	42
156.....	49	390.....	30
158.....	54	394.....	91
167.....	72	400.....	68
183.....	51	404.....	59
199.....	92	415.....	32
208.....	35	418.....	57
209.....	76	423.....	71
211.....	40	429.....	89
213.....	38	433.....	41
215.....	48	435.....	63
224.....	31	455.....	88
232.....	73	474.....	53
240.....	52	501.....	64
254.....	44	506.....	87
255.....	62	519.....	58
256.....	46	520.....	90
257.....	78	527.....	60
283.....	50	550.....	96
284.....	81	559.....	98
298.....	85	560.....	67
299.....	39	566.....	100
305.....	99	578.....	94
316.....	84	586.....	86
321.....	75	588.....	82
323.....	83	591.....	65
324.....	70	597.....	69
325.....	97		

FMG Premier Bull Sale Insurance

What is FMG Premier Bull Insurance?

FMG provides automatic insurance for all bulls auctioned at an FMG Premier Bull Sale up to the value of \$50,000 for 14 days at no cost to the purchaser. For any bull purchased over \$50,000 talk to an FMG representative.

What is the length of cover?

You will automatically be insured for the specified bull for 14 days. You also have the option to extend the length of insurance to 12 months. Simply tick the “Extend your Premier Bull Insurance” option on the Purchaser Slip. The specified bull is then insured for the remaining period of 12 months at **7.6%** of the purchase price (the sum insured for the bull). If you would like to discuss an alternative timeframe, please have a chat with your local FMG representative.

You don't have to pay today, FMG will invoice you for this additional cover.



What are the benefits?

✓ Infertility	Cover if your specified bull has to be euthanised due to permanent infertility caused by certain accidents, disease, or illness.
✓ Theft or death	We cover your specified bull for theft or death caused by certain accidents, disease, injury, or illness (including while in transit anywhere in New Zealand).
✓ Vet costs	We cover up to \$500 for treatment of your specified bull to prevent death.

What will FMG pay?

FMG will pay the fair market value of your specified bull, less any amount you receive for the sale of the carcass, up to the amount shown on the insurance certificate.



MEADOWSLEA SPRING ANGUS BULL SALE

PURCHASER'S INSTRUCTION SLIP

(To be handed into the Auctioneers before leaving sale)

Name:.....

Address:

.....

Telephone:..... NAIT no.#.....

Email:

Purchases:

Lot No:..... \$..... Lot No..... \$.....

Lot No:..... \$..... Lot No..... \$.....

Lot No:..... \$..... Lot No..... \$.....

Lot No:..... \$..... Lot No..... \$.....

Lot No:..... \$..... Lot No..... \$.....

Lot No:..... \$..... Lot No..... \$.....

Lot No:..... \$..... Lot No..... \$.....

Lot No:..... \$..... Lot No..... \$.....

Lot No:..... \$..... Lot No..... \$.....

Lot No:..... \$..... Lot No..... \$.....

Transport Company.....

Account to:

FMG Insurance Cover

- 14 days - FMG Premium Bull cover (at no charge)
- Extend cover to 12 months - FMG Premium Bull cover

Please select your preferred payment method:

- FMG direct
- Farmlands
- Ruralco

Deliver to:.....

Signature of Purchaser:

Date:.....

NO VERBAL INSTRUCTIONS CAN BE ACCEPTED

The Meadowslea hill-country type

Visual appraisal is still very important for selecting cattle to perform in hill - country

MASCULINE TRAITS - A strong head and jaw and thick neck indicate high levels of libido, testosterone and reproduction efficiency

NECK LENGTH - A thicker necked animal matures and reaches puberty earlier and has more libido

A longer neck indicates a higher maintenance animal that is slower to reach puberty and re-breed

HEART GIRTH - Large heart girth is an indicator of vigor and easy keeping ability

Small heart girth animals are more susceptible to stress, are higher maintenance and do not perform well on tussock

RIB FAT - Strong rib fat covers are the essential energy store for adverse conditions.

They indicate easy-doing and finishing ability and are directly related to increased fertility in both heifers and cows.

STRUCTURAL BONE - High country distances over rugged terrain so a strong skeleton is essential

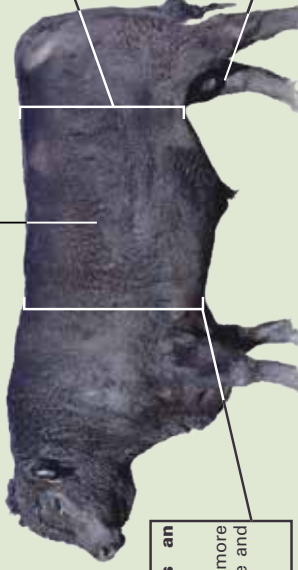
SOUNDNESS, FEET AND cover large cattle terrain so a strong

HIDE - a good thick skin and coat is essential in the cold harsh environment

FLANK - Deep flanked animals are easier keeping, have more meat in the rump and have more maternal and reproductive efficiency

Higher flanked animals tend to be flighty, are higher maintenance and take longer to finish on grass

SCROTAL SIZE - Larger scrotal size at 12 months indicates daughters will reach puberty earlier, be more fertile, and re-breed early every year.



The wait is over

The first 10 sons of the
\$81,000 Rainstorme hit the market!

Heifer mating specialists with 50K genomic
enhanced accuracy

Kincardine Rainstorme R25

Now a trait leader for Calving Ease and Scrotal Size



SEMEN AVAILABLE

SEPTEMBER 2024 TRANSTASMAN ANGUS CATTLE EVALUATION

CED	DTRS	GL	BW	200	400	600	MCW	Milk
+10.2	+6.8	-7.4	+2.3	+45	+80	+88	+27	+32
75%	57%	94%	96%	94%	89%	89%	84%	77%

SS	DC	CW	EMA	Rib Fat	Rump	RBY %	IMF %
+4.7	-4.0	+47	+9.1	+1.5	+1.7	+0.7	+0.2
83%	44%	78%	73%	75%	75%	67%	77%

Trait Leader