

MEADOWSLEA ANGUS 3RD ANNUAL FEMALE PRODUCTION SALE

**ON FARM FAIRLIE
MAY 1ST 2019 – 12 NOON**



OFFERING:

40 R2yr Stud Angus Heifers
20 R3yr Stud Angus Heifers
16 R4yr Stud Angus Cows

16 Annual Draft Stud Angus Cows
**70 R2yr Meadowslea Bred
Commercial Heifers**

SCIENCE CATCHES UP WITH OLD FASHIONED STOCKMANSHIP!



Scientists working in Epigenetics in human medicine have made discoveries that support the breeding programme at Meadowslea. Recent research has shown that an unborn foetus can activate parts of its DNA in response to the challenges of the environment and that these changes can then be passed on to the next generation.



Meadowslea Stud cows winter on unimproved native country without any supplements. This tough challenging environment for the pregnant cow can alter gene expression in the unborn calf. This sets the calf up to survive and thrive for its lifetime and produce offspring in a similar harsh environment that will do the same.

"Epigenetics goes a long way to explain why our own genetics consistently out perform any so-called "high performance" genetics that have been introduced at Meadowslea. It also helps explain why cattle born at sea level are unlikely do any good in the harder hill country "

- David Giddings

GOOD FAT COVER AND EASY-DOING ABILITY



Meadowslea stud 18mth in calf heifers showing good fat coverings and ready to winter on the hill.

A cow's condition and her ability to lay down fat in times of surplus is a very important trait. Any Angus cow should do this under easy down-country conditions, but to be able to do this on native hill country blocks is a very desirable trait. This rib and rump fat is the cheapest and most efficient energy store on the farm and will determine the fertility of the herd after a hard winter or difficult spring conditions to get cows back in calf.



Meadowslea cows and calves come down off the hill for weaning.

All Meadowslea yearling heifers are mated and any dries culled. After calving these heifers are run in mating mobs together with mixed age cows and expected to get back in calf early, rear a good calf off the tussock, and stay in good order. A tough ask for a 2yr heifer and only the ones that prove they can handle the hill will be retained.

A cow going into winter with good fat coverings carries an energy store on her back equivalent to approximately 2 bales of baleage.

The Meadowslea herd has natural Rib and Rump fat levels amongst the highest in the breed in Australasia – acknowledged as a key trait for fertility in the harsh environment.

THIRD ANNUAL FEMALE PRODUCTION SALE

ON FARM

Meadowslea, State Highway 8, 5km west of Fairlie

10am

Cattle penned ready for inspection - continuous hot morning tea

12 NOON

Sale begins followed by BBQ and Refreshments

CONDITIONS

- 1 The New Zealand Stock & Station Agent's Association Conditions of Sale and, to the extent deemed relevant by PGG Wrightson Limited (PGW), PGW's Terms of Sale apply to this sale. When proceeds are credited or a purchase is debited to a PGW monthly credit account, then PGW's Monthly Account Terms of Trade (as amended from time to time) apply to the extent deemed relevant by PGW. These terms can be inspected at the registration desk and on the wall in the auction room. The current versions of PGW's Terms of Sale and Monthly Account Terms of Trade are also available online at: www.pgwrightson.co.nz/Our-Company/Terms-and-Conditions or in hardcopy on request.
- 2 All intending purchasers must register at the sales office prior to the sale.
- 3 PGW will pay a purchasing rebate of the purchase price excluding GST, plus GST of 6% on stud cattle sold with a stud transfer, and 3% on non-stud transferred cattle, to livestock companies & recognised independent livestock agents with a PGW account who have introduced buyers to PGW before the sale and/or accompanied buyers to the sale.
- 4 All stud cattle will enter the ring for sale in pens of 3 or 4 and purchasers will have the right to the pick of the pen or the lot. The balance of the pen if any will then be re-offered.
- 5 Stud cattle purchased for transfer must be nominated at the fall of the hammer. The minimum transfer price will be \$2500. Any lot purchased for Stud transfer at less than this price will be charged out at the transfer price of \$2500.
- 6 Each Lot becomes the responsibility of the purchaser at the fall of the hammer.
- 7 Transit and Livestock insurance can be arranged by the auctioneers.
- 8 The Sale will be conducted purchase price plus GST.

VENDOR:

Mr David S Giddings

Phone: (03) 685 8027
Mobile: (027) 229 9760
Email: giddingsfamily@xtra.co.nz

All Cattle have been vaccinated for BVD and all young cattle have been tested clear.

The Meadowslea Herd TB Status is C10

AUCTIONEERS:

PGG Wrightson

John McCone 027 229 9375
Joe Higgins 027 431 4041 or 03 614 7242
Callum McDonald 027 433 6443
Simon Eddington 027 590 8612
Greg Uren 027 431 4051

PARTICIPATING COMPANIES:

Peter Walsh and Associates
Rural Livestock: Stud Stock
Carrfields Livestock

Hamish Zuppich 027 403 3025
Anthony Cox 027 208 3071
Callum Dunnett 027 587 0131
Roger Keach 027 417 8641

2019 AUSTRALASIAN GROUP BREEDPLAN AVERAGE EBVS FOR 2017 BORN CALVES

Calving Ease				Growth & Maternal					Fertility			300Kg Carcass					Indexes	
DIR	DTRS	GL	BW (kg)	200D Wt (kg)	400D Wt (kg)	600D Wt (kg)	MCt (kg)	MILK (kg)	SS (cm)	DtC	CWt 650d	EMA (sq. cm)	Rib (mm)	Rump (mm)	RBY (%)	IMF (%)	SR	AP
+0.2	+0.4	-4.0	+4.3	+44	+81	+106	+91	+15	+1.8	-4.2	+59	+5.1	+0.0	-0.2	+0.4	+1.7	+\$113	+\$131



MEADOWSLEA
ANGUS & SHEEP GENETICS

FOREWORD

Meadowslea Angus Stud was established in 1985 with the purchase of 6 capital stock heifers from the well-known Turihaua stud north of Gisborne. We have steadily expanded ever since to meet strong demand for bulls from the hill-country market we target – our belief is that an animal must first and foremost be suitable for the environment it is run in.

With the lease of a neighboring property over the last 5 years we have taken the opportunity to increase the stud cow numbers further, and this year mated a total of 560 stud females. The demand for our bulls has steadily increased with 170 bulls sold at auction in 2018. Two years ago, with a confident beef industry and the lease block fully stocked, we held our very successful first annual female auction. We now plan to stabilise at 400 stud cows and sell a similar number, and age-group breakdown, every year going forward. The longevity, fertility, constitution, and structural soundness of our female cattle are crucial for us to present the number of females in this catalogue. We have very few dry cows and minimal losses to breakdowns or poor constitution because our cows are the right type to handle their environment. This means fewer replacements are required and more quality surplus females are available to sell.

At Meadowslea all yearling heifers are mated. The decision around which to sell and keep was made in February with relatively limited information on the young female cattle, since we did not yet know how they will perform in the herd. No doubt many of the young females we are offering will turn out to perform as well as or better than some we are keeping ourselves! In recent years as we have increased the stud cow numbers, and with a view to potentially holding a female sale, we identified some potential sale cows and monitored their performance and that of their progeny. Many animals bred from this group are performing at the very highest level. The proportion of their bull calves making the top sale group, and heifer calves going on to themselves be retained, is very similar to that of the balance of the herd.

We offer these females for sale with complete confidence, and in particular the annual draft cows are true capital stock having done up to 10 years on the hill, survived droughts and snowstorms, without ever being fed supplements. We have sold over \$225,000 worth of bulls from this group of 17 cows over their lifetime! This is truly proven performance.

As you read this catalogue it will become clear that the animals that perform the best in our environment are of a similar type – strong rib fat levels drive our programme forward for two reasons. It is strongly linked to fertility, early puberty and the ability to calve early and re-breed early over a lifetime. Secondly, it is the energy store the females use to get through the feed shortages and extended stress periods all too common in this harsh environment.

It is significant that the average rib fat EBV of the animals on offer is +1.55, putting them well within the top 10% for the breed in Australasia.

The other important maternal traits of calving ease, days to calving, scrotal, and milk are generally all at very high levels throughout the catalogue.

High-growth females do not work well in our hill-country environment and you will see few in the catalogue, as over time they have failed to perform and so have dropped out of the herd. All cattle offered have been scanned in-calf by Aorangi Vets Limited. All dry cows are culled at Meadowslea, so to make it to this sale a cow must have calved every year. We individually mate all stud cows, with one bull per mob initially and change bulls over after approximately 30 days. The 169 yearling stud heifers were mated in 5 mobs of around 35 selected on pedigree. Each mob had 2 yearling bulls of the same bloodline, or one two-year-old, changed after a cycle. This resulted in a 96% conception rate. We undertake DNA parentage testing for all stud calves.

This is the third year we have offered our stud females to the industry, and almost all sires used are unique in the world to the Meadowslea herd. For stud breeders this is an opportunity to access out-cross bloodlines proven to be highly productive in the hill country, and for commercial clients the option to gain access to genetics that would not be available to purchase as bulls for 3 more years.

From our perspective, the more of these bloodlines that are available in the industry here in NZ, the better the chances are of us being able to source sires that fit our programme; a task that is becoming increasingly difficult



with the NZ Angus genepool now so heavily influenced by genetics sourced from the USA and Australia. Feedlots drive most of the selection criteria for these imported genetics making them, in our experience, totally unsuitable for our NZ grass-fed sustainable hill-country production.

COMMERCIAL HEIFERS ON OFFER

We purchased weaner heifer calves last year from three Mackenzie district stations. Grays Hills, Braemar and Horwell Downs have all been long-term clients since our inaugural bull sale over 20 years ago and have always bought very good Meadowslea bulls. All three properties retain only enough heifer calves for their own replacements and sell the balance at the weaner fairs. We have mated these heifers to easy-calving yearling bulls. They will make great cows and their progeny will carry all the genes required for sustainable and efficient hill country production.

Mating dates: **Stud Heifers** November 20th **Commercial heifers** November 28th **Cows** December 11th

We wish you well with your purchases and will follow your progress with a keen interest.

Regards,



David Giddings

Reference Sire

RATANUI LAD 21

Birth Date: 04/08/12

Herd Indent no.: 1800301221

┌ TURHAUA GAMBO W29

TURHAUA CRUMBLE Y167

└ TURHAUA W275

┌ SPRINGDALE HERCO 642

RATANUI 06 666

└ RATANUI 359

┌ TURHAUA GAME U96

TURHAUA U215

┌ TURHAUA CAMPBELL Q197

TURHAUA T266

┌ KAHARAU HERMES 653

SPRINGDALE 784

┌ 848 OF TURIROA

RATANUI 506

2019 AUSTRALASIAN GROUP BREEDPLAN EBVS

DIR	DTRS	GL	BW	200	400	600	MCW	Milk
+4.3	+1.5	-6.2	+1.7	+24	+46	+56	+52	+17
65%	53%	62%	93%	89%	90%	90%	83%	71%

SS	DTC	CW	EMA	Rib Fat	Rump	RBV (%)	IMF%
+0.9	-4.1	+15	+3.3	+2.8	+2.6	-0.4	+0.3
89%	54%	75%	78%	79%	79%	73%	75%

BREEDPLAN INDEXES			
SR	+\$90	AP	+\$90

Comments: Purchased in 2014 from the Ratanui stud in Gisborne, Lad is a trait leader for calving ease and has low birthweight and short gestation in the top 10%. His rib and rump fats are in the top 5% for the breed. His sire Turihaua Crumble is also the sire of Turihaua Crump who of course has bred so well for us. He continues the exceptional depth, thickness, and easy-doing ability we expect of this bloodline and his progeny are very square, sound, well balanced types. He has a number of daughters in the sale that are very suitable to harder hill country.



SPECIALISTS IN GENETICS PERFORMANCE

PGG Wrightson Genetics is a nationwide team of livestock breeding professionals, passionate about improving farm productivity through genetics.

- Ability to source a huge variety of different genetics to suit any farm or production requirements
- Backed by the largest livestock network in New Zealand
- Up-to-date with the latest innovations in livestock breeding
- Relevant knowledge, advice and support
- Achieve top results at live auction sales with our National Auctioneering team
- Understanding of your farming business
- Committed to helping you achieve your production goals

To find out more contact your local genetics specialist or head to www.pggwrightson.co.nz

John McKone

Genetics Specialist/South
Island Auctioneer
0272 299 375

Simon Eddington

Genetics Specialist
0275 908 612

Joe Higgins

Area Livestock Manager
0274 314 041

Greg Uren

Livestock Representative
0274 314 051

Bruce Dunbar

Livestock Representative
0275 956 473

Bruce Thompson

Livestock Representative
0275 956 467

Jonty Hyslop

Livestock Representative
0275 956 450

Matt Gibbs

Livestock Representative
0275 552 307

Kelvin Sadler

Livestock Representative
0274 302 029

Rob Harvey

Livestock Representative
0213 31 519

Sam Bell

Livestock Representative
0272 040 499

Rod Sands

Livestock Representative
0274 314 043



Find us on Facebook:
fb.com/pgwlivestock

Helping grow the country

Reference Sire

TURIHAUA CRUMP E5 (ET)

Birth Date: 15/07/09

Herd Indent no.: 17691009E5

└ TURIHAUA GAMBO W29

TURIHAUA CRUMBLE Y167

└ TURIHAUA W275

└ HINGAIA 121

TURIHAUA Q263

└ TURIHAUA M264

└ TURIHAUA GAME U96
└ TURIHAUA U215└ TURIHAUA CAMPBELL Q197
└ TURIHAUA T266└ HINGAIA 469
└ HINGAIA 387└ RAMBLE 161/8 OF KAUERE
└ TURIHAUA 240

2019 AUSTRALASIAN GROUP BREEDPLAN EBVS

DIR	DTRS	GL	BW	200	400	600	MCW	Milk
-2.0	-2.9	-6.8	+3.9	+30	+62	+88	+99	+17
86%	76%	95%	98%	96%	97%	97%	95%	93%

SS	DTC	CW	EMA	Rib Fat	Rump	RBY (%)	IMF%
+1.5	-9.6	+22	+3.4	+2.0	+1.5	-0.5	+0.1
96%	86%	92%	92%	93%	92%	91%	91%

BREEDPLAN INDEXES

SR	+\$91	AP	+\$111
----	-------	----	--------

Comments: Traditional NZ Angus hill country type. He has sired over 300 outstanding progeny which are always highly sought after. His daughters are proving exceptionally fertile and productive in our hill country, resulting in him now being a trait leader for days to calving at -9.6.



Reference Sire

MEADOWSLEA F540

Birth Date: 30/08/10

Herd Indent no.: 19134010540

└ MEADOWSLEA 70

MEADOWSLEA D227

└ MEADOWSLEA 143

└ FLORIDALE YELET

MEADOWSLEA D042

└ MEADOWSLEA A300

└ TE WHANGA TRAILBLAZER T47
└ MEADOWSLEA 410└ MERCHISTON PLAYMATE 733 AB
└ MEADOWSLEA 743└ ELLERTON LASER 011245
└ FLORIDALE UMOYA└ MEADOWSLEA 116
└ MEADOWSLEA 179

2019 AUSTRALASIAN GROUP BREEDPLAN EBVS

DIR	DTRS	GL	BW	200	400	600	MCW	Milk
+4.2	+1.2	-6.7	+2.3	+33	+75	+88	+75	+29
79%	61%	80%	97%	95%	96%	96%	94%	90%

SS	DTC	CW	EMA	Rib Fat	Rump	RBY (%)	IMF%
+2.6	-8.4	+42	+3.0	+2.3	+2.9	-1.5	+1.4
95%	82%	86%	88%	89%	88%	84%	86%

BREEDPLAN INDEXES

SR	+\$134	AP	+\$142
----	--------	----	--------

Comments: Deep, thick, easy-doing sire with exceptional production figures for hill country. He ranks in the top 10% of the breed for the important maternal and fertility traits of low birth weight, short gestation, scrotal size and rib and rump fat. He is a trait leader for milk, calving ease and days-to-calving figures!

MEADOWSLEA
ANGUS & SHEEP GENETICS

Reference Sire

GOLDWYN 017

Birth Date: 18/09/10

Herd Indent no.: 19944010017

TE MANIA UNLIMITED U3271 (IMP AUS) B/R NEW DESIGN 036
TE MANIA LOWAN R426

TE MANIA INFINITY 04 379

TE MANIA 95102 TE MANIA PRINCE 153-93
TE MANIA 92F006

TE MANIA ULONG U41 (IMP AUS) TE MANIA KNIGHT K206
TE MANIA LOWAN Q42

GOLDWYN 05-595

GOLDWYN 617 TANGIHAU 16883000424
GOLDWYN 374

2019 AUSTRALASIAN GROUP BREEDPLAN EBVS

DIR	DTRS	GL	BW	200	400	600	MCW	Milk
-0.6	-3.9	-6.0	+2.4	+33	+68	+86	+78	+14
77%	68%	86%	96%	94%	94%	95%	92%	89%

SS	DTC	CW	EMA	Rib Fat	Rump	RBV (%)	IMF%
+2.5	-9.7	+37	-0.1	+0.9	+2.4	-1.8	+2.8
94%	79%	83%	85%	86%	85%	82%	83%

BREEDPLAN INDEXES

SR	AP
+\$114	+\$139

Comments: The top Goldwyn bull of his year and purchased for \$13,000. A son of the widely-used Te Mania Infinity, he is passing on good fertility traits with strong scrotal size, positive fats, low birthweight and good IMF figures. His daughters are very fertile resulting in him becoming a trait leader for short days-to-calving. He has several good daughters on offer and was also used as a mating sire to follow up a lot of the cows in this sale.

Reference Sire

MEADOWSLEA J479

Birth Date: 26/09/13

Herd Indent no.: 19134013479

TE MANIA UNLIMITED U3271 (IMP AUS) B/R NEW DESIGN 036
TE MANIA LOWAN R426

MEADOWSLEA 159

MEADOWSLEA 410 BRACKENFIELD PRINCE ABEL
MEADOWSLEA 117

KOROMIKO INTENT U3 WAITAPU INTENSITY 46
KAHIKA L453

MEADOWSLEA 159

MEADOWSLEA 933 GLEN R ABSOLUTE
MEADOWSLEA 337

2019 AUSTRALASIAN GROUP BREEDPLAN EBVS

DIR	DTRS	GL	BW	200	400	600	MCW	Milk
-8.3	-5.7	-0.5	+7.8	+40	+78	+106	+118	+9
62%	47%	83%	92%	87%	87%	88%	79%	67%

SS	DTC	CW	EMA	Rib Fat	Rump	RBV (%)	IMF%
+3.9	-3.5	+44	+1.5	-0.4	-0.1	+1.2	+0.7
87%	57%	73%	75%	77%	76%	71%	73%

BREEDPLAN INDEXES

SR	AP
+\$82	+\$109

Comments: He was retained in 2015 to ensure we maintain some Meadowslea 159 blood in the herd. Meadowslea 159 is still a trait leader for scrotal size and short days-to-calving, two of the most important fertility traits on Breedplan. His daughters are consequently some of the most productive in the herd as can be seen in the annual draft cows. J479 also has strong fertility EBVs and is a trait leader for scrotal size as well. A larger-framed bull but still with tremendous depth of body and sound feet and legs. He has some very good daughters in the sale.

Reference Sire

MEADOWSLEA L226

Birth Date: 26/09/15

Herd Indent no.: 19134015226

MEADOWSLEA F540 MEADOWSLEA D227
MEADOWSLEA D042

MEADOWSLEA J514

MEADOWSLEA B690 FARFIELD AVORIO 316
MEADOWSLEA 183

TURIHAUA CRUMP E5 (ET) TURIHAUA CRUMBLE Y167
TURIHAUA Q263

MEADOWSLEA H104

MEADOWSLEA F687 MEADOWSLEA C804
MEADOWSLEA C986

2019 AUSTRALASIAN GROUP BREEDPLAN EBVS

DIR	DTRS	GL	BW	200	400	600	MCW	Milk
+4.2	-0.5	-6.2	+2.4	+40	+76	+99	+92	+21
54%	35%	51%	86%	80%	80%	81%	75%	55%

SS	DTC	CW	EMA	Rib Fat	Rump	RBV (%)	IMF%
+1.8	-5.1	+42	+2.6	+0.0	+0.2	-0.8	+1.3
79%	47%	67%	67%	70%	69%	64%	63%

BREEDPLAN INDEXES

SR	AP
+\$120	+\$140

Comments: We retained this bull in the stud in 2016. His sire is Meadowslea J514, an F540 son sold for stud to Earnscleugh Station for \$17,000 in 2015. L226 is out of a top young Turihaua Crump heifer who also produced the M452 bull sold in last years bull sale to Peak Hill Station at \$17000 and is also a reference sire in this catalogue. L226 has exceptional calving ease in the top 5% for the breed, plus short gestation and low birthweight. He has good scrotal with a top milk figure - all combining to give good index figures. His first sale progeny look to be impressive medium-framed meaty types.



Reference Sire

MEADOWSLEA K811

Birth Date: 23/09/14

Herd Indent no.: 19134014811

└ TURHAUA CRUMBLE Y167	└ TURHAUA GAMBO W29
	└ TURHAUA W275
TURHAUA CRUMP E5 (ET)	
└ TURHAUA Q263	└ HINGAIA 121
	└ TURHAUA M264
└ MEADOWSLEA 70	└ TE WHANGA TRAILBLAZER T47
MEADOWSLEA E399	└ MEADOWSLEA 410
└ MEADOWSLEA A333	└ STERN 68
	└ MEADOWSLEA 550

2019 AUSTRALASIAN GROUP BREEDPLAN EBVS

DIR	DTRS	GL	BW	200	400	600	MCW	Milk
-2.8	-3.0	-4.8	+5.5	+34	+67	+96	+102	+14
59%	45%	60%	86%	75%	74%	77%	73%	62%

SS	DTC	CW	EMA	Rib Fat	Rump	RBV (%)	IMF%
+2.2	-5.2	+33	+2.7	+1.8	+2.1	-0.7	+0.5
74%	54%	65%	62%	63%	64%	60%	58%

BREEDPLAN INDEXES			
SR	+\$85	AP	+\$111

Comments: Retained in the stud in 2016, he is a top Turihaua Crump son, out of a cow by our old herd sire Meadowslea 70 (who is the grandsire of F540). A deep, thick, easy-doing bull with very strong scrotal and fat EBVs once again. This year his first crop of progeny are for sale and he has some very good sons in the winter sale line-up. They exhibit the same thickness and top hindquarter, and have very strong coats ideal for the harsher climate.



Reference Sire

MEADOWSLEA K703

Birth Date: 21/08/14

Herd Indent no.: 19134014703

└ GLANWORTH WAIGROUP 0816	└ SHALOM WAIGROUP 101/01
	└ GLANWORTH WAIGROUP 226 (ET)
MEADOWSLEA G914	
└ MEADOWSLEA D101	└ MEADOWSLEA B627
	└ MEADOWSLEA B716
└ TURHAUA CRUMP E5 (ET)	└ TURHAUA CRUMBLE Y167
	└ TURHAUA Q263
MEADOWSLEA H126	
└ MEADOWSLEA F545	└ MEADOWSLEA D215
	└ MEADOWSLEA D056

2019 AUSTRALASIAN GROUP BREEDPLAN EBVS

DIR	DTRS	GL	BW	200	400	600	MCW	Milk
+3.9	+1.3	-4.4	+2.0	+29	+60	+66	+39	+11
58%	38%	51%	88%	84%	85%	85%	77%	58%

SS	DTC	CW	EMA	Rib Fat	Rump	RBV (%)	IMF%
+2.9	-9.0	+22	+7.1	+3.6	+4.4	+0.0	-0.3
86%	50%	71%	73%	73%	74%	67%	67%

BREEDPLAN INDEXES			
SR	+\$140	AP	+\$126

Comments: This son of G914 is out of a top Turihaua Crump heifer so is bred to be thick as a brick. He was used as a yearling in 2015 and sold to Nimrod Downs in the 2016 bull sale. He has maternal and fertility traits that are exceptional, with calving ease, low birthweight, scrotal size, and short days-to-calving all in the top 10 %. Meanwhile his rib and rump fat EBVs are off the scale. His progeny have scanned so well his EMA has jumped from +2 to +7.1 and this has pushed his self-replacing index to \$140 recognising the importance of these strong maternal and fertility traits to a commercial beef operation. We believe any high country farmer - and his bank manager - would love to have a herd of cows like this! He features as a sire and mating sire in the catalogue.

MEADOWSLEA
ANGUS & SHEEP GENETICS

www.rurallivestock.co.nz

NZ Owned & Operated



Secure a deal with



Rural Livestock

**STUD STOCK
LIVESTOCK MANAGER**

Anthony Cox
Simon Cox

0272 083 071
0272 097 665

LIVESTOCK REPRESENTATIVES

Peter Garde
Donald Cooke
Mike Brown

0274 325 885
0274 730 854
0274 730 885

Tom Gatrell
Fraser Adams

0274 730 233
0274 730 823

SOUTHERN WIDE REAL ESTATE

Reference Sire

TURIROA 14830 (ET)

Birth Date: 10/08/14

Herd Indent no.: 15603014830

2019 AUSTRALASIAN GROUP BREEDPLAN EBVS

DIR	DTRS	GL	BW	200	400	600	MCW	Milk
-1.3	-0.5	-4.7	+5.8	+39	+73	+100	+93	+15
59%	42%	58%	88%	83%	84%	82%	75%	63%

SS	DTC	CW	EMA	Rib Fat	Rump	RBV (%)	IMF%
+1.9	-2.5	+43	+4.3	+0.9	+1.8	+0.2	+0.7
81%	40%	70%	70%	72%	71%	66%	65%

└ BRAVEHEART OF STERN
TURIROA RAMBLE 11541 (ET)
 └ TURIROA 108601
 └ UNITY 268 OF ELGIN
TURIROA TULIP 459
 └ 821 OF TURIROA

└ HIGHLANDER OF STERN
 STERN 3886
 └ KAHARAU 649
 ALLANA 51 OF TURIROA
 └ STERN 415
 210 OF ELGIN
 └ 29194 OF TE MANIA
 ELDA OF TURIROA

BREEDPLAN INDEXES

SR	+\$105	AP	+\$128
----	--------	----	--------

Comments: Purchased in 2016, we have the first of his progeny coming forward for sale this year. He was selected for his volume and capacity with an outstanding hindquarter, and his progeny strongly reflect this. He is leaving very good EMA with strong rib and rump fats, and his progeny exhibit real depth and volume. He has bred some standout sons for our upcoming June sale, including N141 who was used to mate cows in the first cycle, before Turiroa himself followed him in the 2nd cycle.



Reference Sire

MEADOWSLEA G914

Birth Date: 26/09/11

Herd Indent no.: 19134011914

2019 AUSTRALASIAN GROUP BREEDPLAN EBVS

DIR	DTRS	GL	BW	200	400	600	MCW	Milk
+4.7	+2.2	-3.7	+2.1	+30	+61	+77	+51	+9
69%	51%	61%	95%	92%	93%	93%	88%	78%

SS	DTC	CW	EMA	Rib Fat	Rump	RBV (%)	IMF%
+2.1	-5.7	+31	+4.1	+3.7	+3.8	-0.1	-1.1
93%	69%	79%	82%	82%	82%	76%	79%

└ SHALOM WAIGROUP 101/01
GLANWORTH WAIGROUP 0816
 └ GLANWORTH WAIGROUP 226 (ET)
 └ MEADOWSLEA B627
MEADOWSLEA D101
 └ MEADOWSLEA B716

└ SHALOM 936
 SHALOM KING 35/99
 └ TE MANIA PRINCE 153-93
 TE MANIA H7.90
 └ FARFIELD AVORIO 316
 MEADOWSLEA 101
 └ MEADOWSLEA 159
 MEADOWSLEA 72

BREEDPLAN INDEXES

SR	+\$124	AP	+\$121
----	--------	----	--------

Comments: This is the bull we have named the Meat Machine! We now have over 130 progeny and he is having a huge impact in the herd. He leaves terrific thickness and depth with great hindquarters, and that easy-doing ability we value so strongly showing in his exceptional rib and rump fats which are in the top 1% for the breed. He is a trait leader for calving ease and has low birthweight with good scrotal size and short days-to-calving. We believe he is the true Angus hill-country type.


 MEADOWSLEA
 ANGUS & SHEEP GENETICS

Reference Sire

MEADOWSLEA M452

Birth Date: 10/09/16

Herd Indent no.: 19134016452

└ MT MABLE THOR 660

└ MT MABLE FAT BOY 373
└ MT MABLE EMPRIAL 477

RANGATIRA 13-38

└ KAHARAU 10-9112

└ KAHARAU LANCER 699
└ KAHARAU 05-7634

└ TURIHAUA CRUMP E5 (ET)

└ TURIHAUA CRUMBLE Y167
└ TURIHAUA Q263

MEADOWSLEA H104

└ MEADOWSLEA F687

└ MEADOWSLEA C804
└ MEADOWSLEA C986

2019 AUSTRALASIAN GROUP BREEDPLAN EBVS

DIR	DTRS	GL	BW	200	400	600	MCW	Milk
+0.8	+0.8	-5.0	+6.0	+41	+79	+114	+103	+12
44%	32%	83%	75%	70%	71%	74%	67%	51%

SS	DTC	CW	EMA	Rib Fat	Rump	RBY (%)	IMF%
+1.8	-3.0	+39	+0.8	+0.5	+0.7	-0.4	+0.7
72%	39%	59%	60%	60%	61%	55%	55%

BREEDPLAN INDEXES			
SR	+\$111	AP	+\$148

Comments: This top son of the Rangatira 13-38 (the \$100,000 bull) was sold at lot 10 in the winter sale to Peak Hill Station for \$17,000. He has a very good pedigree, being out of a top Crump cow who is also the mother of the stud sire L226. We have retained a share in this bull and have mated some very good cows to him. He is very powerful with tremendous depth and thickness, and real volume and capacity. He has very strong growth and we are very excited to see the first of his progeny.



Reference Sire

MEADOWSLEA M564

Birth Date: 26/09/16

Herd Indent no.: 19134016564

└ MEADOWSLEA D227

└ MEADOWSLEA 70
└ MEADOWSLEA 143

MEADOWSLEA F540

└ MEADOWSLEA D042

└ FLORIDALE YELET
└ MEADOWSLEA A300└ GLANWORTH WAIGROUP
└ 0816└ SHALOM WAIGROUP 101/01
└ GLANWORTH WAIGROUP 226 (ET)

MEADOWSLEA G1000

└ MEADOWSLEA D183

└ ACHIEVER A320 OF KENHARDT
└ MEADOWSLEA A353

2019 AUSTRALASIAN GROUP BREEDPLAN EBVS

DIR	DTRS	GL	BW	200	400	600	MCW	Milk
+1.7	-0.1	-4.2	+3.8	+41	+83	+107	+94	+21
48%	37%	55%	74%	70%	71%	73%	69%	59%

SS	DTC	CW	EMA	Rib Fat	Rump	RBY (%)	IMF%
+2.3	-7.0	+53	+5.8	+3.0	+3.0	-1.1	+1.0
73%	52%	61%	61%	62%	63%	58%	57%

BREEDPLAN INDEXES			
SR	+\$138	AP	+\$156

Comments: Retained in the stud in 2018, M564 is a son of F540 and out of a great cow by Glanworth 16. We selected him to use as a yearling after he had scanned with the biggest EMA ever recorded in the stud. He has wonderful fertility and maternal traits with calving ease and moderate birth weight, followed by very good growth and scrotal size. His milk, days-to-calving and both rib and rump fat are all in the top 10% for the breed. A moderate-framed, easy-doing type who we mated first with the R2-year stud heifers and then with a top selection of mixed age cows.



Reference Sire

RATANUI NUGGET 605

Birth Date: 27/07/16

Herd Indent no.: 18003016605

2019 AUSTRALASIAN GROUP BREEDPLAN EBVS

DIR	DTRS	GL	BW	200	400	600	MCW	Milk
-1.6	--	-2.1	+4.7	+31	+64	+83	+81	+9
25%		25%	53%	62%	64%	67%	57%	40%

SS	DTC	CW	EMA	Rib Fat	Rump	RBV (%)	IMF%
+2.0	-3.7	+32	+3.8	+3.0	+4.1	-0.7	-0.2
68%	26%	52%	51%	50%	53%	45%	40%

MANGAPAPA 10054

MANGAPAPA 0254
MANGAPAPA 0350

MANGAPAPA 443

MANGAPAPA 04154

WAIMATA H540
MANGAPAPA 01132

KAHARAU 09-201

KAHARAU GERONIMO 06-305
KAHARAU 7114

RATANUI 390 (RP)

RATANUI 07 7008 AP (P)

TURIROA CARGO 80
RATANUI 361 (BF) (P)

BREEDPLAN INDEXES

SR	+\$94	AP	+\$101
----	-------	----	--------

Comments: Purchased in 2018, Nugget is a son of the Mangapapa Scotty bull who is breeding very well. We selected him for his exceptional easy-doing ability with his rib and rump figures in the top 1% for the breed. He has exceptional depth of hindquarter with soft fleshing and wonderful structural soundness. We think he should fit well into our breeding programme.



Reference Sire

RANGATIRA 16209

Birth Date: 31/07/16

Herd Indent no.: 15819016209

2019 AUSTRALASIAN GROUP BREEDPLAN EBVS

DIR	DTRS	GL	BW	200	400	600	MCW	Milk
--	--	-3.4	+5.4	+33	+64	+93	+94	+9
		33%	50%	63%	64%	62%	53%	46%

SS	DTC	CW	EMA	Rib Fat	Rump	RBV (%)	IMF%
+2.3	-1.8	+35	+2.1	+1.3	+2.0	-0.7	+0.3
65%	25%	52%	49%	48%	51%	44%	39%

DANDALOO ADMIRAL 741

17 OF KAWATIRI
PRIDE 465 OF DANDALOO

RANGATIRA 13-19

KAHARAU 08-8330

KAHARAU 05-61
KAHARAU 7030

KAHARAU 07-610

RANGATIRA GERONIMO 843
KAHARAU 6625

KAHARAU 09-8703

KAHARAU 07-8061

KAHARAU ZOOM 05-114
KAHARAU 7088

BREEDPLAN INDEXES

SR	+\$81	AP	+\$108
----	-------	----	--------

Comments: Purchased at the Rangatira sale in 2018, this bull was selected for his strength, bone, head and quality. He has a very good hindquarter with strong rib and rump fats and a very good scrotal. He combines many of the older bloodlines at Rangatira and Kaharau, that feature many of the traits lost to the modern Angus. We have mated him to some very good cows in this sale, as well as many of our own top retained cows, and look forward to his progeny arriving.

MEADOWSLEA
ANGUS & SHEEP GENETICS

Carrfields

Livestock

WE HAVE YOUR STUD STOCK NEEDS COVERED



Neville Clark

Auctioneer - 027 587 0131



Callum Dunnett

Stud Stock Agent - 027 587 0131



Andrew Holt

Auctioneer - 027 496 3311



Bruce Orr

Stud Stock Agent - 027 4922 122



Roger Keach

Stud Stock Agent - 027 417 8641



Tom Suttor

Stud Stock Agent - 027 616 4504



YEARLING MATING SIRES

Reference Sire

MEADOWSLEA N166

Birth Date: 16/09/17

Herd Indent no.: 19134017166

┌ TURIHAUA CRUMBLE Y167 ┌ TURIHAUA GAMBO W29
 └ TURIHAUA W275
TURIHAUA CRUMP E5 (ET)
 ┌ TURIHAUA Q263 ┌ HINGAIA 121
 └ TURIHAUA M264
 ┌ GLANWORTH WAIGROUP 0816 ┌ SHALOM WAIGROUP 101/01
 └ GLANWORTH WAIGROUP 226 (ET)
MEADOWSLEA G922
 ┌ MEADOWSLEA A330 ┌ MEADOWSLEA 116
 └ MEADOWSLEA 174

2019 AUSTRALASIAN GROUP BREEDPLAN EBVS

DIR	DTRS	GL	BW	200	400	600	MCW	Milk
-2.2	-0.2	-5.4	+5.0	+35	+69	+96	+99	+15
51%	42%	62%	74%	69%	70%	68%	66%	60%

SS	DTC	CW	EMA	Rib Fat	Rump	RBV (%)	IMF%
+1.9	-7.4	+35	+4.2	+1.6	+1.5	+0.1	-0.5
73%	53%	62%	62%	63%	63%	60%	59%

BREEDPLAN INDEXES			
SR	+\$102	AP	+\$118

Comments: We rate this outstanding yearling as possibly the best Turihaua Crump son ever. He is out of a top-performing Glanworth 16 cow who bred our top price bull last year- M429, sold to Red Oak Stud for \$18,000. She has bred other top sons sold at \$11,500 and \$9,500. N166 was selected to mate stud cows for his outstanding depth and thickness, combined with his strong growth, good muscle and his easy-doing traits of rib and rump fats in the top 10% for the breed. He is a standout and is likely be retained in the stud.



Reference Sire

MEADOWSLEA N141

Birth Date: 14/09/17

Herd Indent no.: 19134017141

┌ TURIROA RAMBLE 11541 (ET) ┌ BRAVEHEART OF STERN
 └ TURIROA 108601
TURIROA 14830 (ET)
 ┌ TURIROA TULIP 459 ┌ UNITY 268 OF ELGIN
 └ TURIROA 821 OF TURIROA
 ┌ MEADOWSLEA G914 ┌ GLANWORTH WAIGROUP 0816
 └ MEADOWSLEA D101
MEADOWSLEA K700
 ┌ MEADOWSLEA H150 ┌ BRAVEHEART OF STERN
 └ MEADOWSLEA 45

2019 AUSTRALASIAN GROUP BREEDPLAN EBVS

DIR	DTRS	GL	BW	200	400	600	MCW	Milk
+0.2	-0.7	-4.1	+5.0	+38	+76	+101	+87	+15
39%	28%	42%	71%	65%	66%	64%	60%	45%

SS	DTC	CW	EMA	Rib Fat	Rump	RBV (%)	IMF%
+2.0	-3.8	+45	+5.7	+1.6	+2.1	+0.6	-0.1
69%	35%	54%	55%	56%	57%	51%	49%

BREEDPLAN INDEXES			
SR	+\$121	AP	+\$136

Comments: This son of Turiroa 14-830 is a different dimension in thickness with a pedigree to match. He is double-bred to Braveheart of Stern and out of a cow by Meadowslea G914 (the Meat Machine). He scanned with the 2nd biggest EMA out of 190 bulls, and his 400 day was the 4th heaviest. We selected him to use over stud cows and with the figures and strength he possesses, we think he will create a lot of interest if we decide to sell him.



MEADOWSLEA
ANGUS & SHEEP GENETICS

YEARLING MATING SIRES

Reference Sire

MEADOWSLEA N119

Birth Date: 09/09/17

Herd Indent no.: 19134017119

RED OAK 378	PINEBANK 21/08 TURIHAUA Z31
MEADOWSLEA K904	
MEADOWSLEA B667	MEADOWSLEA 159 MEADOWSLEA 151
MEADOWSLEA C847	MEADOWSLEA A325 MEADOWSLEA A424
MEADOWSLEA E350	
MEADOWSLEA C914	MEADOWSLEA 159 MEADOWSLEA 185

2019 AUSTRALASIAN GROUP BREEDPLAN EBVS

DIR	DTRS	GL	BW	200	400	600	MCW	Milk
-0.7	-1.2	-5.8	+5.7	+39	+69	+91	+99	+10
40%	28%	82%	73%	67%	68%	66%	62%	52%

SS	DTC	CW	EMA	Rib Fat	Rump	RBV (%)	IMF%
+2.9	-4.4	+34	+2.4	+2.5	+3.1	-0.5	+0.8
71%	40%	56%	56%	58%	59%	53%	51%

BREEDPLAN INDEXES			
SR	+\$103	AP	+\$119

Comments: This bull is a son of K904 who we used as a yearling and then sold to Robin Jameson for \$9,500. He bred exceptionally well and his 3 sons in the 2018 sale averaged \$13,000. We used him again in the AI programme to breed N119 out of the great cow E0350, who is the top annual draft cow in this sale at lot 77. His Grandam is the great old cow C914 who bred retained keeper H202. N119 is a beautifully sound bull with wonderful hind-quarter. He has tremendous scrotal size and rib and rump fats in the top 5% for the breed, and scanned with the third-best marbling out of 190 bulls.



Reference Sire

MEADOWSLEA N465

Birth Date: 02/10/17

Herd Indent no.: 19134017465

TE MANIA INFINITY 04 379	TE MANIA UNLIMITED U3271 (IMP AUS) TE MANIA 95102
GOLDWYN 017	
GOLDWYN 05-595	TE MANIA ULONG U41 (IMP AUS) GOLDWYN 617
TURIHAUA CRUMP E5 (ET)	TURIHAUA CRUMBLE Y167 TURIHAUA Q263
MEADOWSLEA K910	
MEADOWSLEA A476	MEADOWSLEA 121 MEADOWSLEA 80

2019 AUSTRALASIAN GROUP BREEDPLAN EBVS

DIR	DTRS	GL	BW	200	400	600	MCW	Milk
-1.6	-3.4	-5.3	+3.9	+37	+74	+96	+91	+16
47%	40%	56%	72%	68%	69%	67%	65%	56%

SS	DTC	CW	EMA	Rib Fat	Rump	RBV (%)	IMF%
+3.1	-6.2	+39	+1.2	+1.9	+2.7	-1.8	+2.2
72%	49%	58%	59%	59%	60%	56%	55%

BREEDPLAN INDEXES			
SR	+\$106	AP	+\$130

Comments: This Goldwyn 17 son is out of a Turihaua Crump cow and has real performance. He ranked in the top 4% of all the 190 bulls for his actual data for 400-day, scrotal size, EMA, rib and rump fat and marbling - which is very hard to achieve! We rate this chap as easily the best Goldwyn 17 son we have bred, and he may well be retained in the stud.



YEARLING MATING SIRES

Reference Sire

MEADOWSLEA N257

Birth Date: 30/09/17

Herd Indent no.: 19134017257

MEADOWSLEA J514	MEADOWSLEA F540
	MEADOWSLEA B690
MEADOWSLEA L226	
MEADOWSLEA H104	TURIHAUA CRUMP E5 (ET)
	MEADOWSLEA F687
ACHIEVER A320 OF KEN-	
HARDT	STERN EXACT 185 (ET)
MEADOWSLEA F801	X733 OF KENHARDT
MEADOWSLEA C1047	PIKO BURN 31-03
	MEADOWSLEA 151

BREEDPLAN INDEXES			
SR	+\$123	AP	+\$133

Comments: This son of L226 is a very impressive bull. We used him over stud heifers in the second cycle after M564 was taken out to mate adult cows. He has a great set of data for mating heifers with good calving ease and low birth weight, followed by good growth, with short days-to-calving and good milk figures - all combining for a good Self Replacing Index. A lovely deep bodied-bull with easy fleshing.

2019 AUSTRALASIAN GROUP BREEDPLAN EBVS

DIR	DTRS	GL	BW	200	400	600	MCW	Milk
+3.0	+0.2	-4.3	+3.0	+39	+76	+95	+84	+17
39%	28%	42%	71%	65%	66%	64%	61%	47%

SS	DTC	CW	EMA	Rib Fat	Rump	RBV (%)	IMF%
+2.5	-5.1	+45	+2.5	+0.8	+0.2	+0.0	+0.4
70%	39%	54%	55%	56%	58%	52%	49%



Reference Sire

MEADOWSLEA N146

Birth Date: 15/09/17

Herd Indent no.: 19134017146

GLANWORTH WAIGROUP	SHALOM WAIGROUP 101/01
0816	GLANWORTH WAIGROUP 226 (ET)
MEADOWSLEA G914	
MEADOWSLEA D101	MEADOWSLEA B627
	MEADOWSLEA B716
GOLDWYN 017	TE MANIA INFINITY 04 379
MEADOWSLEA J428	GOLDWYN 05-595
MEADOWSLEA G828	GLANWORTH WAIGROUP 0816
	MEADOWSLEA E274

BREEDPLAN INDEXES			
SR	+\$127	AP	+\$138

Comments: This G914 son was used over stud heifers in the first cycle (together with N228). He is out of a Goldwyn 17 cow and has strong maternal traits with good calving ease and low birth weight, followed by good growth. His short days-to-calving and rib and rump figures are in the top 5% for the breed. We really rate these sons of G914 (the Meat Machine) and this chap has all the depth and thickness we love in the hill-country.

2019 AUSTRALASIAN GROUP BREEDPLAN EBVS

DIR	DTRS	GL	BW	200	400	600	MCW	Milk
+2.7	+1.2	-4.6	+3.0	+34	+67	+86	+72	+7
45%	34%	47%	74%	69%	70%	68%	65%	54%

SS	DTC	CW	EMA	Rib Fat	Rump	RBV (%)	IMF%
+1.6	-7.6	+36	+1.5	+2.7	+3.5	-0.9	+0.4
73%	47%	58%	60%	61%	62%	56%	55%



MEADOWSLEA
ANGUS & SHEEP GENETICS

YEARLING MATING SIRES

Reference Sire

MEADOWSLEA N431

Birth Date: 23/09/17

Herd Indent no.: 19134017431

MEADOWSLEA G914

MEADOWSLEA K703

MEADOWSLEA H126

MEADOWSLEA D140

MEADOWSLEA G1066

MEADOWSLEA 156

GLANWORTH WAIGROUP 0816
MEADOWSLEA D101

TURIHAUA CRUMP E5 (ET)
MEADOWSLEA F545

ACHIEVER A320 OF KENHARDT
MEADOWSLEA A352

KOROMIKO INTENT U3
MEADOWSLEA 739

2019 AUSTRALASIAN GROUP BREEDPLAN EBVS

DIR	DTRS	GL	BW	200	400	600	MCW	Milk
+1.1	-0.4	-2.9	+3.1	+29	+60	+75	+61	+12
39%	27%	38%	72%	66%	67%	65%	61%	47%

SS	DTC	CW	EMA	Rib Fat	Rump	RBV (%)	IMF%
+2.3	-7.5	+29	+5.6	+3.2	+3.9	+0.0	-0.9
71%	41%	55%	56%	57%	58%	52%	50%

BREEDPLAN INDEXES			
SR	+\$114	AP	+\$110

Comments: This K703 son packs in a lot of muscle. He has great heifer mating figures with good calving ease, low birth weight and good scrotal size. He was used in the first cycle over stud heifers (together with N157). His short days-to-calving, rib fat and rump fat figures are in the top 5% of the breed, and he scanned with the 4th best EMA out of 190 bulls. Deep, thick, and easy-doing, he is the perfect hill-country type.



April 2019 Angus BREEDPLAN - Percentile Bands for all 2017 born animals

Use this table as a guide to compare individual animals with the current genetic level of the breed

	Calv-Ease		Birth		Growth					Fert		Carcase						Indexes		Extra
	Dir	Dtrs	GL	Bwt	200	400	600	Mwt	Milk	SS	DC	Cwt	EMA	Rib	P8	RBV	IMF	SR	AP	Doc
	%	%	days	kg	kg	kg	kg	kg	kg	cm	days	kg	sq.cm	mm		%	%	\$	\$	%
High 1%	+5.0	+4.4	-9.7	+0.5	+61	+109	+145	+138	+25	+3.8	-8.9	+85	+10.9	+3.0	+3.2	+2.5	+4.0	+171	+200	+31
High 5%	+3.9	+3.5	-7.7	+1.7	+56	+100	+132	+123	+22	+3.1	-7.5	+77	+8.9	+2.0	+2.1	+1.9	+3.3	+156	+181	+24
High 10%	+3.2	+2.9	-6.8	+2.3	+53	+96	+126	+115	+20	+2.8	-6.8	+73	+8.0	+1.5	+1.6	+1.5	+3.0	+147	+170	+19
High 15%	+2.7	+2.5	-6.2	+2.7	+52	+93	+122	+110	+19	+2.6	-6.3	+71	+7.4	+1.2	+1.2	+1.3	+2.7	+141	+163	+16
High 20%	+2.3	+2.2	-5.8	+3.0	+51	+91	+119	+106	+19	+2.4	-5.9	+69	+6.9	+1.0	+0.9	+1.1	+2.5	+136	+157	+14
High 25%	+2.0	+1.8	-5.4	+3.2	+49	+89	+117	+103	+18	+2.3	-5.6	+67	+6.5	+0.8	+0.7	+1.0	+2.3	+132	+152	+12
High 30%	+1.6	+1.6	-5.1	+3.5	+48	+87	+114	+100	+17	+2.2	-5.3	+66	+6.2	+0.6	+0.5	+0.9	+2.2	+128	+147	+10
High 35%	+1.3	+1.3	-4.8	+3.7	+48	+86	+112	+98	+17	+2.1	-5.0	+64	+5.9	+0.4	+0.3	+0.8	+2.1	+124	+143	+8
High 40%	+1.0	+1.0	-4.5	+3.9	+47	+84	+110	+95	+16	+2.0	-4.8	+63	+5.6	+0.3	+0.2	+0.7	+1.9	+120	+139	+7
High 45%	+0.7	+0.8	-4.2	+4.1	+46	+83	+108	+93	+16	+1.9	-4.5	+62	+5.3	+0.1	+0.0	+0.5	+1.8	+117	+135	+5
50%	+0.4	+0.5	-4.0	+4.3	+45	+82	+106	+91	+15	+1.8	-4.3	+60	+5.1	+0.0	-0.2	+0.4	+1.7	+113	+131	+4
Low 45%	+0.1	+0.3	-3.7	+4.5	+44	+80	+104	+88	+15	+1.7	-4.0	+59	+4.8	-0.2	-0.3	+0.3	+1.6	+109	+127	+3
Low 40%	-0.2	+0.0	-3.5	+4.7	+43	+79	+102	+86	+14	+1.6	-3.8	+57	+4.5	-0.3	-0.5	+0.2	+1.4	+105	+123	+1
Low 35%	-0.6	-0.2	-3.2	+4.9	+42	+77	+100	+84	+14	+1.5	-3.5	+56	+4.2	-0.5	-0.7	+0.1	+1.3	+101	+119	+0
Low 30%	-0.9	-0.5	-2.9	+5.1	+41	+76	+98	+81	+13	+1.4	-3.2	+54	+3.9	-0.6	-0.9	+0.0	+1.2	+97	+114	-2
Low 25%	-1.3	-0.9	-2.7	+5.3	+40	+74	+95	+79	+13	+1.3	-2.9	+52	+3.6	-0.8	-1.0	-0.1	+1.0	+93	+110	-3
Low 20%	-1.8	-1.2	-2.3	+5.6	+39	+72	+92	+75	+12	+1.2	-2.6	+50	+3.2	-1.0	-1.3	-0.3	+0.9	+89	+105	-5
Low 15%	-2.4	-1.7	-1.9	+5.9	+37	+69	+89	+72	+11	+1.0	-2.1	+47	+2.8	-1.2	-1.5	-0.4	+0.7	+84	+100	-7
Low 10%	-3.2	-2.3	-1.4	+6.3	+35	+66	+84	+67	+10	+0.8	-1.5	+42	+2.2	-1.5	-1.9	-0.7	+0.4	+78	+93	-9
Low 5%	-4.5	-3.2	-0.5	+6.9	+32	+61	+77	+59	+9	+0.5	-0.5	+36	+1.4	-1.9	-2.4	-1.0	+0.1	+71	+84	-13
Low 1%	-7.4	-5.2	+1.3	+8.1	+24	+50	+61	+42	+6	-0.1	+1.5	+25	-0.1	-2.8	-3.4	-1.7	-0.4	+57	+69	-20

YEARLING MATING SIRES

Reference Sire **MEADOWSLEA N157** Birth Date: 14/09/17

Herd Indent no.: 19134017157

MEADOWSLEA G914
MEADOWSLEA K703
 MEADOWSLEA H126
 MEADOWSLEA J481
MEADOWSLEA L086
 MEADOWSLEA H152

GLANWORTH WAIGROUP 0816
 MEADOWSLEA D101
 TURIHAUA CRUMP E5 (ET)
 MEADOWSLEA F545
 MEADOWSLEA F540
 MEADOWSLEA F536
 MEADOWSLEA F548
 MEADOWSLEA 1123

2019 AUSTRALASIAN GROUP BREEDPLAN EBVS

DIR	DTRS	GL	BW	200	400	600	MCW	Milk
+0.5	--	-2.9	+4.5	+34	+70	+82	+65	+14
35%		37%	71%	65%	66%	64%	60%	40%

SS	DTC	CW	EMA	Rib Fat	Rump	RBY (%)	IMF%
+2.3	-7.9	+36	+6.4	+2.4	+3.3	-0.7	+0.7
70%	36%	53%	55%	55%	57%	51%	48%

BREEDPLAN INDEXES			
SR	+\$126	AP	+\$128

Comments: This K703 son is out of a granddaughter of F540, and as you would expect has great figures. He was used in the first cycle over the stud heifers (together with N431). He scanned with the best EMA out of all 190 bulls, with very good fats and the 5th best marbling. He has calving ease with good scrotal size and his short days-to-calving, rib fat and rump fat are in the top 2% for the breed. Another deep, thick, easy doing hill-country type.

Reference Sire **MEADOWSLEA N228** Birth Date: 26/09/17

Herd Indent no.: 19134017228

GLANWORTH WAIGROUP 0816
MEADOWSLEA G914
 MEADOWSLEA D101
 TURIHAUA CRUMP E5 (ET)
MEADOWSLEA H101
 MEADOWSLEA F642

SHALOM WAIGROUP 101/01
 GLANWORTH WAIGROUP 226 (ET)
 MEADOWSLEA B627
 MEADOWSLEA B716
 TURIHAUA CRUMBLE Y167
 TURIHAUA Q263
 KAHARAU 07-558
 MEADOWSLEA C851

2019 AUSTRALASIAN GROUP BREEDPLAN EBVS

DIR	DTRS	GL	BW	200	400	600	MCW	Milk
+2.5	+0.5	-4.1	+3.0	+29	+59	+80	+74	+11
44%	34%	47%	73%	68%	69%	68%	64%	54%

SS	DTC	CW	EMA	Rib Fat	Rump	RBY (%)	IMF%
+2.0	-7.9	+28	+3.5	+2.9	+3.0	+0.0	-0.9
72%	47%	58%	59%	60%	61%	56%	54%

BREEDPLAN INDEXES			
SR	+\$111	AP	+\$118

Comments: This G914 son was used in the first cycle over stud heifers (together with N146). He has strong fertility traits with good calving ease, low birth weight and has the important short days-to-calving and rib and rump fats in the top 2% for the breed once again. Another deep-bodied easy-doing type typical of the G914 sons.

Reference Sire **MEADOWSLEA N298** Birth Date: 10/10/17

Herd Indent no.: 19134017298

KAYJAY CRAMPON H495
KAYJAY CRAMPON K16
 KAYJAY BAVENDER H599
 STERN 0713
MEADOWSLEA G920
 MEADOWSLEA 160

TURIHAUA CRAMPON E28
 OTOKA MINNIE 910
 KAYJAY CRUSADER 673
 KAYJAY BAVENDER 496
 HIGHLANDER OF STERN
 STERN 5183
 TE WHANGA TRAILBLAZER T47
 MEADOWSLEA 982

2019 AUSTRALASIAN GROUP BREEDPLAN EBVS

DIR	DTRS	GL	BW	200	400	600	MCW	Milk
+2.8	-0.7	-4.1	+2.9	+30	+61	+76	+71	+16
38%	27%	39%	71%	65%	66%	63%	59%	45%

SS	DTC	CW	EMA	Rib Fat	Rump	RBY (%)	IMF%
+2.4	-4.6	+34	+1.7	+2.0	+3.3	-0.7	+0.5
68%	36%	53%	53%	54%	56%	50%	47%

BREEDPLAN INDEXES			
SR	+\$103	AP	+\$109

Comments: This son of KayJay Crampton was used over stud heifers to follow Ratanui Nugget. He has terrific calving ease - in the top 10% for the breed - with a low birth weight, good scrotal, and rib and rump fats in the top 5% for the breed. A very sound bull who is an ideal type for hill-country.



Weigh scale revolutionizing Angus breeder's operation

David Giddings' family has been farming the high country in Fairlie since 1926. "We've been here forever", he says. Their Romney stud was established in 1926 and David established the Angus stud in 1985. Today their operation extends to 700ha with a total of 10,000 stock units comprising 500 Angus stud cows and 2,000 stud ewes.

Garnering a reputation in the industry as a top high country stock breeder, David says his success has in part been the result of identifying and incorporating the right technology into his operation. Technology that gives him information at his fingertips.

The latest 'gadget' is Tru-Test's XR5000 weigh scale.

Weighing and using the data to manage their sheep has been part of their farming practice for a long time.

Getting access to the equivalent cattle information however, is new to their operation.

"We were having to do all this EID work with sending our animals away and so upgraded our weighing and tracking kit to Tru-Test's XR5000 and XRS Stick Reader when we upgraded our yards," explains David.

"We had been looking to get some kind of hand held device which would give us information on the cattle and be compatible with the Angus breed

programme, HerdMaster."

Someone suggested to David that the XR5000 would do a lot of what they wanted.

"And it can! It's an unbelievable piece of kit."

"For cattle breeders not using this equipment, I am sure if they did and had the same information we now do, they would make different decisions on their breeding programmes. Decisions like which bull you put with which cow or if you sell it."

"We just carry it around with us now and it's got all this data on it. The memory capacity is phenomenal."

"You can see an animal, type their number in, and up comes all the information we want. Like what calf it



David Giddings

had this year, how heavy the calf was, who she's mated to, when she's in calf - early, late - just all that information."

"So, as well as weighing, the EID and the NAIT stuff, it's main use for us is doing the job of something like a tablet."

For David, it has changed what they can do as they now have so much information at their fingertips in the yard.

"We can just walk along with the stick reader on a race of cattle and we'll know which ones are pregnant, which ones calved to one particular bull etc. Basically, anything you want to find out about a particular animal, which is pretty amazing."

"It's revolutionized our operation, particularly with the likes of our first cow sale which we've just had".



"The XR5000 enabled us to track all our cows and progeny coming up to the sale. Whether these cows were going in the sale or whether they weren't. We could also tell types of cows, number, and knew who each had been mated to, first time and second time. We knew what calves each had, how heavy they were and who that calf was by, and how heavy that calf was."

"Quite simply, we couldn't have done it without that piece of kit as we couldn't have carried all that info with us, and certainly couldn't have done it all in time".

Their first auction went well with a new NZ record price set.

"Once you've loaded all the information in it can just tell you what you want to know, and it's telling that all on one screen, and all at the same time. So you can make the right decisions".

"There's nothing else around that can do that!"

"You don't have to go back to the house or the office or look at bits of paper or through a pile of books."

You just get it all programmed in there and just go!

"We've also been using it to mother up all the calves. We would have a group of cows and then want to find their calves. We would just go through the list of calves and up popped all the ones we needed. It meant we could go out and put them back with their mother in a completely different mob to where they were".

They have also used it for mating their cows.

"When the first cow is in front of us we would have all her information on screen. We also have a pop up screen with 9 different sires on it. We would select one and that would be her mate. The next time she comes in the yard we will have all her previous mates, including what we did the last time. We can then choose to change her to a new mate if we want. We've got a record of all that."

"It just does away with thousands of bits of paper."

"You're also making decisions on all that info, not just part, which you would normally have done in the past. As a result, the accuracy of those decisions will be far better."

"For cattle breeders not using this equipment, I am sure if they did and had the same information we now do, they would make different decisions on their breeding programmes. Decisions like which bull you put with which cow or if you sell it."

"If more breeders use this equipment as a decision-making tool, well it's going to increase the performance of Angus herds across New Zealand."

David is currently looking at getting a cow's lifetime data on the XR5000.

"We'll have the data right from calves she's ever had, what the weighting of

Meadowslea Angus & Sheep Genetics



Location:	Fairlie
Size:	700 ha
Stock:	10,000 total stock units 500 Angus stud cows 2,000 stud ewes

Farm history:

Romney stud established in 1926.
Angus stud established in 1985.

"If more breeders use this equipment as a decision-making tool, well it's going to increase the performance of Angus herds across New Zealand."

the calves was, where they ended up, who bought the bulls, and how many daughters retained in the herd."

"This piece of kit, seriously you can't operate without it. I recommend it 100%."

**How are you tracking?
Let's talk.
0800 878 837**

**All cattle offered for sale today have
been pregnancy scanned by:**

Aorangi Veterinary Services Ltd

"Your Animals Our Expertise"

**Offering a complete service for your
farm and pet animals in the South
Canterbury area**

Birth Date: 07/10/17

ID No: 19134117285

┌ TURIHAUA CRUMBLE Y167 ┌ TURIHAUA GAMBO W29
 └ TURIHAUA Q263 └ TURIHAUA W275
 ┌ MEADOWSLEA F540 ┌ MEADOWSLEA D227
 └ MEADOWSLEA F677 └ MEADOWSLEA D042
 ┌ MEADOWSLEA D096
 └ MEADOWSLEA D038

2019 AUSTRALASIAN GROUP BREEDPLAN EBVS

DIR	DTRS	GL	BW	200	400	600	MCW	Milk
+0.4	-1.6	-5.6	+3.6	+33	+64	+80	+74	+17
50%	41%	60%	74%	69%	70%	69%	67%	60%

SS	DTC	CW	EMA	Rib Fat	Rump	RBY (%)	IMF%
+2.1	-8.8	+28	+3.8	+1.3	+1.8	-0.7	+1.0
61%	53%	61%	61%	67%	65%	62%	61%

Comments: To lead this sale we have a classic Turihaua Crump heifer out of an F540 daughter - the cross that keeps breeding us great cattle. She has a great wide top, a good coat, and easy-doing quality. Her dam H102 bred a top son we used in the stud and sold to Overtons last year at \$9,500. N285 has performed very well with good growth, she was 4th heaviest at scanning when she also had the 4th biggest EMA and 2nd-top marbling figure at 7.5. Mated to the new Ratanui Nugget bull then the yearlings N381 and N298.

BREEDPLAN INDEXES

SR	+ \$111	AP	+ \$120
----	---------	----	---------

Purchaser:

PRICE: \$

Birth Date: 23/09/17

ID No: 19134117432

┌ MEADOWSLEA D227 ┌ MEADOWSLEA 70
 └ MEADOWSLEA D042 └ MEADOWSLEA 143
 ┌ MEADOWSLEA H209 ┌ FLORIDALE YELET
 └ MEADOWSLEA H223 └ MEADOWSLEA A300
 ┌ TURIHAUA CRUMP E5 (ET)
 └ MEADOWSLEA D239
 ┌ KAHARAU 07-558
 └ MEADOWSLEA C1015

2019 AUSTRALASIAN GROUP BREEDPLAN EBVS

DIR	DTRS	GL	BW	200	400	600	MCW	Milk
+2.6	+0.1	-4.8	+3.1	+32	+69	+86	+80	+20
45%	35%	52%	73%	67%	68%	67%	65%	54%

SS	DTC	CW	EMA	Rib Fat	Rump	RBY (%)	IMF%
+2.3	-7.5	+37	+3.6	+1.3	+1.8	-0.8	+1.1
57%	49%	58%	58%	64%	62%	58%	57%

Comments: An F540 daughter out of a Crump granddaughter - these bloodlines cross just as well the other way around! N432 is a good thick type and scanned well with very large EMA and a good marbling figure of 6.8. She has all the maternal and fertility traits you would expect of an F540 with milk, DTC, and fats all in the top 10% of breed. Mated to Ratanui Nugget followed by N381 and N298.

BREEDPLAN INDEXES

SR	+ \$120	AP	+ \$135
----	---------	----	---------

Purchaser:

PRICE: \$

Birth Date: 18/09/17

ID No: 19134117418

┌ KAYJAY CRAMPON H495 ┌ TURIHAUA CRAMPON E28
 └ KAYJAY BAVENDER H599 └ OTOKA MINNIE 910
 ┌ MEADOWSLEA H217 ┌ KAYJAY CRUSADER 673
 └ MEADOWSLEA H130 └ KAYJAY BAVENDER 496
 ┌ TURIHAUA CRUMP E5 (ET)
 └ MEADOWSLEA D077
 ┌ MEADOWSLEA F540
 └ MEADOWSLEA F654

2019 AUSTRALASIAN GROUP BREEDPLAN EBVS

DIR	DTRS	GL	BW	200	400	600	MCW	Milk
+0.7	--	-3.8	+4.4	+31	+63	+86	+84	+16
34%		36%	72%	65%	64%	69%	63%	36%

SS	DTC	CW	EMA	Rib Fat	Rump	RBY (%)	IMF%
+2.1	-2.8	+32	+4.2	-1.4	-1.1	+1.6	-0.7
48%	31%	53%	51%	59%	57%	51%	50%

Comments: A KJ Crampton daughter with impressive performance. N418 is deep, thick, and very sound. She weighed in with the top 400 day weight at 500kg, and at scanning had the 2nd best EMA in her group. Mated to the two G914 sons N146 and N228, followed by N362 and N368.

BREEDPLAN INDEXES

SR	+ \$92	AP	+ \$107
----	--------	----	---------

Purchaser:

PRICE: \$



Lot: 4 MEADOWSLEA N300

Birth Date: 11/10/17

ID No: 19134117300

MEADOWSLEA G914
MEADOWSLEA L252
 MEADOWSLEA G1035
 MEADOWSLEA H202
MEADOWSLEA L260
 MEADOWSLEA G967

GLANWORTH WAIGROUP 0816
 MEADOWSLEA D101
 MEADOWSLEA C804
 MEADOWSLEA C1024
 TURIHAUA CRUMP E5 (ET)
 MEADOWSLEA C914
 MEADOWSLEA C804
 MEADOWSLEA 44

2019 AUSTRALASIAN GROUP BREEDPLAN EBVS

DIR	DTRS	GL	BW	200	400	600	MCW	Milk
-0.4	--	-3.6	+5.6	+35	+69	+99	+103	+12
35%		39%	72%	66%	65%	70%	65%	41%

SS	DTC	CW	EMA	Rib Fat	Rump	RBV (%)	IMF%
+2.6	-6.8	+34	+0.7	+2.8	+3.7	-0.7	-0.8
51%	37%	54%	53%	61%	59%	54%	53%

Comments: A heifer's calf here by the very good yearling L252 who was sold to Reece Whitelock where he has done very well. A very sound, deep, thick type with some scale, she is easy-doing with great scrotal size and fat EBVs. Mated to M564, followed by the two L226 sons N257 and N415.

BREEDPLAN INDEXES

SR	+99	AP	+116
----	-----	----	------

Purchaser:

PRICE: \$

Lot: 5 MEADOWSLEA N137

Birth Date: 13/09/17

ID No: 19134117137

MEADOWSLEA H119
MEADOWSLEA K890
 MEADOWSLEA G828
 MEADOWSLEA D227
MEADOWSLEA F530
 MEADOWSLEA D126

TURIHAUA CRUMP E5 (ET)
 MEADOWSLEA F555
 GLANWORTH WAIGROUP 0816
 MEADOWSLEA E274
 MEADOWSLEA 70
 MEADOWSLEA 143
 FLORIDALE YELET
 MEADOWSLEA 1123

2019 AUSTRALASIAN GROUP BREEDPLAN EBVS

DIR	DTRS	GL	BW	200	400	600	MCW	Milk
-2.7	-2.7	-3.3	+5.9	+36	+69	+92	+90	+11
39%	27%	82%	72%	65%	66%	64%	61%	47%

SS	DTC	CW	EMA	Rib Fat	Rump	RBV (%)	IMF%
+2.8	-5.6	+38	+2.0	+1.8	+2.5	-0.8	+1.0
50%	39%	54%	53%	62%	59%	54%	53%

Comments: A well-bred heifer here with plenty of growth ranking her second for 400 day weight. Sire K890 was later sold for stud to Glen R Angus. Her dam is breeding well with a top son sold to Mt Gerald Station at \$10,000. She is big, strong and powerful, and also scanned well with good EMA, strong fats, and a top marbling of 7.4. Mated to the K703 sons N157 and N431, followed by N362 and N368.

BREEDPLAN INDEXES

SR	+96	AP	+116
----	-----	----	------

Purchaser:

PRICE: \$

Lot: 6 MEADOWSLEA N102

Birth Date: 05/09/17

ID No: 19134117102

MEADOWSLEA H119
MEADOWSLEA K890
 MEADOWSLEA G828
 TE MANIA INFINITY 04 379
MEADOWSLEA G819
 MEADOWSLEA 188

TURIHAUA CRUMP E5 (ET)
 MEADOWSLEA F555
 GLANWORTH WAIGROUP 0816
 MEADOWSLEA E274
 TE MANIA UNLIMITED U3271 (IMP AUS)
 TE MANIA 95102
 MEADOWSLEA 101
 MEADOWSLEA 140

2019 AUSTRALASIAN GROUP BREEDPLAN EBVS

DIR	DTRS	GL	BW	200	400	600	MCW	Milk
-0.6	-0.5	-7.7	+4.3	+34	+67	+87	+84	+8
41%	33%	83%	72%	64%	65%	63%	60%	47%

SS	DTC	CW	EMA	Rib Fat	Rump	RBV (%)	IMF%
+2.3	-5.4	+35	+1.2	+1.6	+3.2	-1.0	+0.8
52%	39%	54%	53%	61%	59%	54%	53%

Comments: Another well-bred K890, this thick, deep and powerful heifer is out of a very good cow by Te Mania Infinity who reared her to the top weaning weight of her year. She has continued growing with a top 400-day weight and good easy doing fats. Mated to the K703 sons N157 and N431, followed up by N362 and N368.

BREEDPLAN INDEXES

SR	+105	AP	+120
----	------	----	------

Purchaser:

PRICE: \$



Lot: 7 MEADOWSLEA N202

Birth Date: 23/09/17

ID No: 19134117202

GLANWORTH WAIGROUP 0816
MEADOWSLEA G914
 MEADOWSLEA D101
 MEADOWSLEA F540
MEADOWSLEA K754
 MEADOWSLEA C1015

SHALOM WAIGROUP 101/01
 GLANWORTH WAIGROUP 226 (ET)
 MEADOWSLEA B627
 MEADOWSLEA B716
 MEADOWSLEA D227
 MEADOWSLEA D042
 MEADOWSLEA A442
 MEADOWSLEA 970

2019 AUSTRALASIAN GROUP BREEDPLAN EBVS

DIR	DTRS	GL	BW	200	400	600	MCW	Milk
+2.0	-0.3	-3.5	+4.1	+34	+70	+85	+65	+13
43%	32%	46%	73%	68%	69%	67%	64%	52%

SS	DTC	CW	EMA	Rib Fat	Rump	RBV (%)	IMF%
+2.3	-6.2	+36	+4.2	+3.0	+3.7	-0.6	-0.1
57%	46%	57%	58%	64%	62%	58%	57%

Comments: Top figures here on this heifer sired by G914 and out of an F540 cow - she is certainly bred to be easy-doing with great fertility traits combining to give her the top Self Replacing Index. In-calf to the top yearling N465, followed by N361.

BREEDPLAN INDEXES

SR	+ \$124	AP	+ \$124
----	---------	----	---------

Purchaser:

PRICE: \$

Lot: 8 MEADOWSLEA 101

Birth Date: 05/09/17

ID No: 19134117101

TURIHAUA CRUMP E5 (ET)
MEADOWSLEA K746
 MEADOWSLEA G835
 MEADOWSLEA 159
MEADOWSLEA D186
 MEADOWSLEA 9117

TURIHAUA CRUMBLE Y167
 TURIHAUA Q263
 GLANWORTH WAIGROUP 0816
 MEADOWSLEA 138
 TE MANIA UNLIMITED U3271 (IMP AUS)
 MEADOWSLEA 410
 MERCHISTON PLAYMATE 733 AB
 MEADOWSLEA 405

2019 AUSTRALASIAN GROUP BREEDPLAN EBVS

DIR	DTRS	GL	BW	200	400	600	MCW	Milk
+1.7	+1.3	-7.2	+2.4	+25	+51	+66	+66	+14
40%	32%	82%	72%	65%	64%	71%	65%	50%

SS	DTC	CW	EMA	Rib Fat	Rump	RBV (%)	IMF%
+2.9	-7.7	+22	+4.3	+2.6	+3.1	+0.1	+0.1
53%	43%	55%	54%	61%	59%	54%	53%

Comments: By a very good Crump yearling who was sold to Matt Mackenzie for \$9,500 where he continues to do very well, and out of a great old cow who is lot 91 in this catalogue. N101 is easy-doing, thick and clean-cut. She has great fertility traits with calving ease, low birth weight, DTC, scrotal size and fat EBVs all in the top 10% of the breed. She scanned very well with the top EMA in the group. Mated to Ratanui Nugget followed by N381 and N298.

BREEDPLAN INDEXES

SR	+ \$105	AP	+ \$110
----	---------	----	---------

Purchaser:

PRICE: \$

Lot: 9 MEADOWSLEA N296

Birth Date: 09/10/17

ID No: 19134117296

MEADOWSLEA D227
MEADOWSLEA F540
 MEADOWSLEA D042
 MEADOWSLEA D098
MEADOWSLEA F536
 MEADOWSLEA D258

MEADOWSLEA 70
 MEADOWSLEA 143
 FLORIDALE YELET
 MEADOWSLEA A300
 TE MANIA 05 461
 MEADOWSLEA 196
 ACHIEVER A320 OF KENHARDT
 MEADOWSLEA 9

2019 AUSTRALASIAN GROUP BREEDPLAN EBVS

DIR	DTRS	GL	BW	200	400	600	MCW	Milk
+3.5	+0.9	-4.1	+1.9	+30	+65	+77	+65	+23
48%	37%	53%	74%	69%	70%	69%	67%	60%

SS	DTC	CW	EMA	Rib Fat	Rump	RBV (%)	IMF%
+1.8	-8.3	+34	+2.9	+2.3	+3.5	-1.6	+0.8
60%	51%	60%	60%	66%	64%	60%	60%

Comments: A classic deep, thick F540 daughter here who scanned very well with top fat figures and actual marbling of 6.7. All the maternal and fertility figures typical of an F540 with calving-ease, low birthweight, milk, scrotal and fats all in the top 5% for the breed. Mated to Ratanui Nugget followed by N381 and N298.

BREEDPLAN INDEXES

SR	+ \$119	AP	+ \$122
----	---------	----	---------

Purchaser:

PRICE: \$



Give yourself the best chance of success on sale day.

Our world-leading livestock management system provides you with fast, accurate information to track the performance of your sires and make better-informed decisions that pay off on sale day.

Read

Our complete range of Zee™ Tags products combined with Tru-Test EID Stick and Panel Readers make viewing animal tag data and capturing management information quick and easy.



Weigh

Tru-Test load bars are regarded as the most reliable, rugged and long-lasting available.



View

Tru-Test's range of durable indicators has earned a global reputation for the fastest and most accurate weight capture technology.



Analyse

MiHub Livestock Management Software turns your weighing data into clearly presented, useful information and insights that help you better manage individual animal performance.



Lot: 10 MEADOWSLEA N231

Birth Date: 27/09/17

ID No: 19134117231

└ TURIROA RAMBLE 11541 (ET) ┐ BRAVEHEART OF STERN
TURIROA 108601
TURIROA 14830 (ET)
└ TURIROA TULIP 459 ┐ UNITY 268 OF ELGIN
821 OF TURIROA

└ MEADOWSLEA H119 ┐ TURIAHAU CRUMP E5 (ET)
MEADOWSLEA F555
MEADOWSLEA K857
└ MEADOWSLEA F549 ┐ STERN 0713
MEADOWSLEA D238

2019 AUSTRALASIAN GROUP BREEDPLAN EBVS

DIR	DTRS	GL	BW	200	400	600	MCW	Milk
+1.0	-0.5	-4.6	+3.9	+34	+67	+88	+74	+17
37%	27%	42%	72%	66%	65%	70%	64%	44%

SS	DTC	CW	EMA	Rib Fat	Rump	RBV (%)	IMF%
+2.2	-4.2	+39	+5.2	+1.6	+1.8	+0.3	+0.8
52%	34%	54%	54%	61%	59%	53%	52%

Comments: The first Turiroa 14830 daughter on offer, this heifer has a bit more scale with some strength and stretch about her. She scanned with a top EMA and very good raw marbling figure of 6.7. Her dam is breeding very well. The first son she produced as a 2 year heifer selling to Foveran Station for \$13,000. Mated to the G914 sons N146 and N228, followed by N362 and N368.

BREEDPLAN INDEXES

SR	+114	AP	+130
----	------	----	------

Purchaser:

PRICE: \$

Lot: 11 MEADOWSLEA N154

Birth Date: 16/09/17

ID No: 19134117154

└ MEADOWSLEA D227 ┐ MEADOWSLEA 70
MEADOWSLEA 143
MEADOWSLEA F540
└ MEADOWSLEA D042 ┐ FLORIDALE YELET
MEADOWSLEA A300

└ TURIAHAU CRUMP E5 (ET) ┐ TURIAHAU CRUMBLE Y167
TURIAHAU Q263
MEADOWSLEA J639
└ MEADOWSLEA 240 ┐ STERN 68
MEADOWSLEA 9117

2019 AUSTRALASIAN GROUP BREEDPLAN EBVS

DIR	DTRS	GL	BW	200	400	600	MCW	Milk
+2.2	+0.6	-6.0	+3.3	+33	+67	+87	+86	+21
48%	38%	57%	74%	69%	70%	68%	66%	58%

SS	DTC	CW	EMA	Rib Fat	Rump	RBV (%)	IMF%
+2.0	-7.4	+36	+3.9	+1.6	+1.8	-0.3	+0.3
60%	51%	60%	60%	66%	64%	60%	60%

Comments: Another F540 daughter here out of a Crump cow - this is the best breeding cross at Meadowslea. N154 has all the fertility and maternal traits we would expect from a F540 daughter with good calving ease and low birthweight, while her milk, DTC, and fats are in the top 10% for the breed. Her dam is a good Crump cow who has bred a son sold to Foveran Station for \$9,000. Mated to Ratanui Nugget followed by N381 and N298.

BREEDPLAN INDEXES

SR	+115	AP	+127
----	------	----	------

Purchaser:

PRICE: \$

Lot: 12 MEADOWSLEA N136

Birth Date: 13/09/17

ID No: 19134117136

└ KAYJAY CRAMPON H495 ┐ TURIAHAU CRAMPON E28
OTOKA MINNIE 910
KAYJAY CRAMPON K16
└ KAYJAY BAVENDER H599 ┐ KAYJAY CRUSADER 673
KAYJAY BAVENDER 496

└ MEADOWSLEA G875 ┐ TE MANIA INFINITY 04 379
MEADOWSLEA 45
MEADOWSLEA J624
└ MEADOWSLEA D238 ┐ FLORIDALE YELET
MEADOWSLEA 20

2019 AUSTRALASIAN GROUP BREEDPLAN EBVS

DIR	DTRS	GL	BW	200	400	600	MCW	Milk
-2.3	-2.7	-2.0	+4.9	+31	+61	+82	+81	+14
35%	25%	38%	71%	65%	66%	64%	60%	42%

SS	DTC	CW	EMA	Rib Fat	Rump	RBV (%)	IMF%
+1.7	-4.3	+34	+1.1	-0.1	+0.6	+0.0	+0.2
50%	33%	53%	53%	61%	58%	53%	52%

Comments: A sound and well-balanced KJ Crampton daughter out of a good young breeding cow. Mated to the G914 sons N146 and N228, followed by N362 and N368.

BREEDPLAN INDEXES

SR	+\$78	AP	+\$92
----	-------	----	-------

Purchaser:

PRICE: \$



Lot: 13 MEADOWSLEA N348

Birth Date: 26/10/17

ID No: 19134117348

└ TURIHAUA CRUMBLE Y167 └ TURIHAUA GAMBO W29
└ TURIHAUA W275
TURIHAUA CRUMP E5 (ET)
└ TURIHAUA Q263 └ HINGAIA 121
└ TURIHAUA M264

└ PIKO BURN CHAR 26-06 └ RANGATIRA 850
MEADOWSLEA H257
└ MEADOWSLEA B695 └ PIKO BURN 4-03
└ PIKO BURN 31-03
└ MEADOWSLEA 68

2019 AUSTRALASIAN GROUP BREEDPLAN EBVS

DIR	DTRS	GL	BW	200	400	600	MCW	Milk
+0.1	+1.5	-5.5	+3.0	+28	+55	+75	+79	+15
50%	41%	58%	74%	69%	70%	68%	66%	60%

SS	DTC	CW	EMA	Rib Fat	Rump	RBV (%)	IMF%
+2.3	-6.2	+24	+3.8	+1.6	+1.5	+0.3	-0.1
60%	53%	61%	61%	67%	65%	61%	61%

Comments: A Crump daughter showing all the maternal traits we value strongly. Thick, deep and square with strong coat, she is the typical Crump type. Mated to M564 followed by N415 and N257.

BREEDPLAN INDEXES

SR **+\$94** **AP** **+\$105**

Purchaser:

PRICE: \$

Lot: 14 MEADOWSLEA N318

Birth Date: 15/10/17

ID No: 19134117318

└ MEADOWSLEA J514 └ MEADOWSLEA F540
└ MEADOWSLEA B690
MEADOWSLEA L226
└ MEADOWSLEA H104 └ TURIHAUA CRUMP E5 (ET)
└ MEADOWSLEA F687

└ TURIHAUA CRUMP E5 (ET) └ TURIHAUA CRUMBLE Y167
MEADOWSLEA H328
└ MEADOWSLEA D082 └ TURIHAUA Q263
└ TE MANIA 05 461
└ MEADOWSLEA 35

2019 AUSTRALASIAN GROUP BREEDPLAN EBVS

DIR	DTRS	GL	BW	200	400	600	MCW	Milk
+3.2	-0.3	-6.3	+2.2	+33	+62	+85	+88	+19
40%	29%	45%	72%	66%	67%	65%	62%	47%

SS	DTC	CW	EMA	Rib Fat	Rump	RBV (%)	IMF%
+1.3	-5.2	+29	+2.7	+1.3	+1.7	-1.1	+0.6
53%	40%	56%	56%	63%	61%	56%	55%

Comments: A daughter of L226 and out of a Crump cow. Thick, deep and square with a very good coat, her figures show good calving ease with a nice low birth weight followed by good growth and easy doing fats. Mated to N465 followed by N361.

BREEDPLAN INDEXES

SR **+\$97** **AP** **+\$114**

Purchaser:

PRICE: \$

Lot: 15 MEADOWSLEA N229

Birth Date: 27/09/17

ID No: 19134117229

└ TURIHAUA CRUMP E5 (ET) └ TURIHAUA CRUMBLE Y167
└ TURIHAUA Q263
MEADOWSLEA L219
└ MEADOWSLEA H105 └ MEADOWSLEA F540
└ MEADOWSLEA F607

└ TURIHAUA CRUMP E5 (ET) └ TURIHAUA CRUMBLE Y167
MEADOWSLEA J551
└ MEADOWSLEA B679 └ TURIHAUA Q263
└ MEADOWSLEA 159
└ MEADOWSLEA 99

2019 AUSTRALASIAN GROUP BREEDPLAN EBVS

DIR	DTRS	GL	BW	200	400	600	MCW	Milk
+0.0	-1.8	-5.0	+3.8	+29	+57	+79	+92	+17
41%	33%	51%	73%	66%	67%	66%	62%	49%

SS	DTC	CW	EMA	Rib Fat	Rump	RBV (%)	IMF%
+1.6	-7.0	+26	+2.1	+1.2	+0.8	-0.4	+0.5
54%	43%	56%	57%	64%	61%	57%	56%

Comments: A very good Waiterenui J144 daughter out of a Crump cow. Grandam is lot 86 in this sale. Deep and thick with a strong coat. Mated to M564 followed by N415 and N257.

BREEDPLAN INDEXES

SR **+\$84** **AP** **+\$103**

Purchaser:

PRICE: \$



Lot: 16 MEADOWSLEA N311

Birth Date: 13/10/17

ID No: 19134117311

MEADOWSLEA J406
MEADOWSLEA L123
 MEADOWSLEA J533
 MEADOWSLEA J531
MEADOWSLEA L139
 MEADOWSLEA J505

MEADOWSLEA F540
 MEADOWSLEA G835
 GOLDWYN 017
 MEADOWSLEA F612
 TURIHAUA CRUMP E5 (ET)
 MEADOWSLEA B667
 GLANWORTH WAIGROUP 0816
 MEADOWSLEA C983

2019 AUSTRALASIAN GROUP BREEDPLAN EBVS

DIR	DTRS	GL	BW	200	400	600	MCW	Milk
-1.5	--	-4.5	+4.9	+36	+73	+96	+98	+15
32%		38%	69%	63%	64%	61%	59%	38%
SS	DTC	CW	EMA	Rib Fat	Rump	RBV (%)	IMF%	
+2.8	-6.7	+40	+1.7	+2.8	+3.3	-0.9	+0.3	
48%	34%	51%	51%	60%	57%	52%	50%	

Comments: A heifer's calf with plenty of growth, bred by an F540 grandson out of a Crump grand-daughter - the next generation! N311 is a typical smooth, clean-cut F540-type with good scrotal and fat figures once again. Mated to N465 followed by N361.

BREEDPLAN INDEXES

SR	+ \$107	AP	+ \$121
----	---------	----	---------

Purchaser:

PRICE: \$

Lot: 17 MEADOWSLEA N466

Birth Date: 02/10/17

ID No: 19134117466

TE MANIA INFINITY 04 379
GOLDWYN 017
 GOLDWYN 05-595
 MEADOWSLEA G914
MEADOWSLEA K866
 MEADOWSLEA B570

TE MANIA UNLIMITED U3271 (IMP AUS)
 TE MANIA 95102
 TE MANIA ULONG U41 (IMP AUS)
 GOLDWYN 617
 GLANWORTH WAIGROUP 0816
 MEADOWSLEA D101
 MEADOWSLEA 104
 MEADOWSLEA 292

2019 AUSTRALASIAN GROUP BREEDPLAN EBVS

DIR	DTRS	GL	BW	200	400	600	MCW	Milk
+1.0	-1.0	-4.5	+2.5	+31	+64	+73	+53	+9
45%	38%	52%	72%	68%	68%	73%	68%	55%
SS	DTC	CW	EMA	Rib Fat	Rump	RBV (%)	IMF%	
+1.6	-6.2	+33	+2.9	+1.8	+2.6	-0.7	+1.2	
57%	48%	58%	58%	64%	63%	58%	58%	

Comments: A stylish, well-balanced Goldwyn 17 daughter here out of a G914 cow. Scanned very well with the 3rd best EMA and the top rib and rump fats as well as a marbling figure of 6.5. She has calving ease and low birthweight with good muscle and fat EBVs in keeping with her easy-fleshing appearance. Mated to M564 followed by N415 and N257.

BREEDPLAN INDEXES

SR	+ \$118	AP	+ \$121
----	---------	----	---------

Purchaser:

PRICE: \$

Lot: 18 MEADOWSLEA N498

Birth Date: 14/10/17

ID No: 19134117498

TURIHAUA CRUMBLE Y167
RATANUI LAD 21
 RATANUI 06 666
 GOLDWYN 017
MEADOWSLEA K012
 MEADOWSLEA B716

TURIHAUA GAMBO W29
 TURIHAUA W275
 SPRINGDALE HERCO 642
 RATANUI 359
 TE MANIA INFINITY 04 379
 GOLDWYN 05-595
 MEADOWSLEA 159
 MEADOWSLEA 72

2019 AUSTRALASIAN GROUP BREEDPLAN EBVS

DIR	DTRS	GL	BW	200	400	600	MCW	Milk
+1.7	-1.2	-4.6	+3.3	+29	+56	+74	+76	+15
41%	34%	44%	73%	68%	67%	72%	66%	48%
SS	DTC	CW	EMA	Rib Fat	Rump	RBV (%)	IMF%	
+1.5	-4.2	+26	+3.1	+0.7	+0.8	+0.2	+0.9	
55%	41%	57%	57%	63%	61%	56%	56%	

Comments: A Ratanui Lad 21 daughter out of a Goldwyn cow. Very well balanced, stylish and sound, she scanned well for EMA and marbling. Mated to Ratanui Nugget, N381 and N298.

BREEDPLAN INDEXES

SR	+ \$92	AP	+ \$109
----	--------	----	---------

Purchaser:

PRICE: \$



Lot: 19 MEADOWSLEA N450

Birth Date: 28/09/17

ID No: 19134117450

└ TURHAUA CRUMBLE Y167 └ TURHAUA GAMBO W29
└ TURHAUA W275
RATANUI LAD 21
└ RATANUI 06 666 └ SPRINGDALE HERCO 642
└ RATANUI 359

└ STERN 0713 └ HIGHLANDER OF STERN
└ STERN 5183
MEADOWSLEA G982
└ MEADOWSLEA D135 └ TE MANIA 05 461
└ MEADOWSLEA 42

2019 AUSTRALASIAN GROUP BREEDPLAN EBVS

DIR	DTRS	GL	BW	200	400	600	MCW	Milk
+2.3	-1.4	-5.0	+3.4	+27	+52	+61	+54	+18
42%	34%	44%	74%	68%	68%	72%	67%	51%

SS	DTC	CW	EMA	Rib Fat	Rump	RBY (%)	IMF%
+1.0	-5.1	+27	+4.9	+2.3	+2.7	-0.6	+1.4
57%	41%	57%	57%	64%	62%	57%	56%

Comments: Another very similar good-type Ratanui 21 daughter, who scanned very well for EMA, fats and marbling. Mated to N465 followed by N361.

Breedplan Indexes

SR	+97	AP	+102
----	-----	----	------

Purchaser:

PRICE: \$

Lot: 20 MEADOWSLEA N246

Birth Date: 29/09/17

ID No: 19134117246

└ TURHAUA CRUMBLE Y167 └ TURHAUA GAMBO W29
└ TURHAUA W275
TURHAUA CRUMP E5 (ET)
└ TURHAUA Q263 └ HINGAIA 121
└ TURHAUA M264

└ GLANWORTH WAIGROUP 0816 └ SHALOM WAIGROUP 101/01
└ GLANWORTH WAIGROUP 226 (ET)
MEADOWSLEA G828
└ MEADOWSLEA E274 └ MEADOWSLEA C875
└ MEADOWSLEA C845

2019 AUSTRALASIAN GROUP BREEDPLAN EBVS

DIR	DTRS	GL	BW	200	400	600	MCW	Milk
-2.2	-0.3	-5.1	+5.1	+30	+63	+89	+100	+11
51%	42%	61%	74%	69%	70%	68%	67%	61%

SS	DTC	CW	EMA	Rib Fat	Rump	RBY (%)	IMF%
+1.5	-7.5	+30	+2.6	+0.9	+0.7	+0.6	-0.6
61%	53%	62%	62%	67%	65%	62%	61%

Comments: A Crump daughter here, this time out of a Glanwoth 16 cow who produced the stud bull K890, who was sold to Glen R Angus and has several daughters in this offering. N246 is thick, deep, and square with a good coat and maternal phenotype. Mated to Ratanui Nugget followed by N381 and N298.

Breedplan Indexes

SR	+92	AP	+112
----	-----	----	------

Purchaser:

PRICE: \$

Lot: 21 MEADOWSLEA N116

Birth Date: 08/09/17

ID No: 19134117116

└ MATAURI REALITY 839 └ SCHURRTOP REALITY X723
└ MATAURI 06663
MEADOWSLEA L141
└ MEADOWSLEA C949 └ PIKO BURN 31-03
└ MEADOWSLEA 739

└ TURHAUA CRUMP E5 (ET) └ TURHAUA CRUMBLE Y167
└ TURHAUA Q263
MEADOWSLEA L125
└ MEADOWSLEA D101 └ MEADOWSLEA B627
└ MEADOWSLEA B716

2019 AUSTRALASIAN GROUP BREEDPLAN EBVS

DIR	DTRS	GL	BW	200	400	600	MCW	Milk
+2.9	+2.1	-6.3	+2.5	+31	+61	+76	+80	+13
42%	34%	61%	71%	65%	66%	63%	61%	47%

SS	DTC	CW	EMA	Rib Fat	Rump	RBY (%)	IMF%
+2.2	-7.2	+30	+2.4	+4.5	+4.3	-1.5	+0.5
53%	40%	55%	55%	62%	60%	56%	55%

Comments: Leading off this next pen, this daughter of a 2-year Crump heifer is typical of that bloodline and shows real potential. Sired by a good Matauri Reality son who was later sold to Linnburn Station for \$11,000 where he has done very well. Grandam D101 is also in this sale at lot 81 and is the mother of our top stud sire G914 (the Meat Machine). Very good fertility traits with calving ease, low birthweight, DTC, and fats all in the top 10% for the breed. Scanned with the top rib fat in the group. In-calf to the top yearling N465 followed by N361.

Breedplan Indexes

SR	+112	AP	+118
----	------	----	------

Purchaser:

PRICE: \$



Lot: 22 MEADOWSLEA N457

Birth Date: 30/09/17

ID No: 19134117457

┌ TURIHAUA CRUMP E5 (ET) ┌ TURIHAUA CRUMBLE Y167
└ MEADOWSLEA E399 └ TURIHAUA Q263

MEADOWSLEA K811

┌ MEADOWSLEA 70
└ MEADOWSLEA A333

┌ KAHARAU 07-558 ┌ RANGATIRA GERONIMO 843
└ MEADOWSLEA D183 └ KAHARAU 5824

MEADOWSLEA H267

┌ MEADOWSLEA A320 OF KENHARDT
└ MEADOWSLEA A353

2019 AUSTRALASIAN GROUP BREEDPLAN EBVS

DIR	DTRS	GL	BW	200	400	600	MCW	Milk
-1.8	-3.3	-2.8	+5.0	+33	+64	+92	+94	+15
39%	30%	42%	72%	64%	63%	69%	64%	46%

SS	DTC	CW	EMA	Rib Fat	Rump	RBV (%)	IMF%
+1.6	-4.2	+32	+3.6	+1.0	+1.2	-0.1	+0.2
49%	41%	54%	52%	59%	57%	53%	51%

Comments: A K811 daughter who scanned with good EMA, fats, and marbling. She is a good hill-country type with a strong coat. Mated to the G914 sons N146 and N228, followed by N362 and N368.

BREEDPLAN INDEXES

SR	+83	AP	+\$107
----	-----	----	--------

Purchaser:

PRICE: \$

Lot: 23 MEADOWSLEA N472

Birth Date: 04/10/17

ID No: 19134117472

┌ TURIHAUA CRUMP E5 (ET) ┌ TURIHAUA CRUMBLE Y167
└ MEADOWSLEA E399 └ TURIHAUA Q263

MEADOWSLEA K811

┌ MEADOWSLEA 70
└ MEADOWSLEA A333

┌ KAHARAU 07-558 ┌ RANGATIRA GERONIMO 843
└ MEADOWSLEA E398 └ KAHARAU 5824

MEADOWSLEA H319

┌ MEADOWSLEA C801
└ MEADOWSLEA 149

2019 AUSTRALASIAN GROUP BREEDPLAN EBVS

DIR	DTRS	GL	BW	200	400	600	MCW	Milk
-4.0	-2.7	-2.6	+6.0	+32	+63	+86	+94	+10
38%	28%	41%	72%	64%	63%	69%	64%	46%

SS	DTC	CW	EMA	Rib Fat	Rump	RBV (%)	IMF%
+1.3	-4.2	+30	+2.3	+0.4	+1.2	-0.2	+0.3
49%	41%	53%	52%	59%	57%	52%	51%

Comments: A K811 daughter very similar to the last. Thick and gutsy with a good coat. Mated to the K703 sons N157 and N431, followed by N362 and N368.

BREEDPLAN INDEXES

SR	+\$75	AP	+\$94
----	-------	----	-------

Purchaser:

PRICE: \$

Lot: 24 MEADOWSLEA N272

Birth Date: 03/10/17

ID No: 19134117272

┌ MEADOWSLEA J514 ┌ MEADOWSLEA F540
└ MEADOWSLEA L226 └ MEADOWSLEA B690

┌ MEADOWSLEA H104 ┌ TURIHAUA CRUMP E5 (ET)
└ MEADOWSLEA F687

┌ MEADOWSLEA H119 ┌ TURIHAUA CRUMP E5 (ET)
└ MEADOWSLEA F555

MEADOWSLEA K823

┌ MEADOWSLEA F545 ┌ MEADOWSLEA D215
└ MEADOWSLEA D056

2019 AUSTRALASIAN GROUP BREEDPLAN EBVS

DIR	DTRS	GL	BW	200	400	600	MCW	Milk
+3.3	--	-5.7	+2.2	+32	+62	+77	+68	+18
36%		39%	72%	66%	65%	71%	65%	42%

SS	DTC	CW	EMA	Rib Fat	Rump	RBV (%)	IMF%
+2.3	-7.2	+28	+2.5	+2.0	+2.4	-1.0	+1.0
51%	37%	54%	53%	61%	59%	54%	52%

Comments: An L226 daughter with a great coat, thickness, and very good numbers for hill country. Calving ease, scrotal size and fat figures all in the top 10% for the breed. Mated to Ratanui Nugget, N381 and N298.

BREEDPLAN INDEXES

SR	+\$113	AP	+\$121
----	--------	----	--------

Purchaser:

PRICE: \$





Lot: 25 MEADOWSLEA N496

Birth Date: 13/10/17

ID No: 19134117496

└ TURIHAUA CRUMBLE Y167 └ TURIHAUA GAMBO W29
└ TURIHAUA W275
RATANUI LAD 21
└ RATANUI 06 666 └ SPRINGDALE HERCO 642
└ RATANUI 359

└ TE WHANGA TRAILBLAZER └ FOSSIL CREEK SHADOW
└ T47 └ TE WHANGA ER K132
MEADOWSLEA 160
└ MEADOWSLEA 982 └ MEADOWSLEA 703
└ MEADOWSLEA 754

2019 AUSTRALASIAN GROUP BREEDPLAN EBVS

DIR	DTRS	GL	BW	200	400	600	MCW	Milk
+1.3	-2.0	-3.9	+5.4	+28	+52	+73	+84	+13
46%	38%	46%	75%	70%	69%	74%	68%	56%

SS	DTC	CW	EMA	Rib Fat	Rump	RBV (%)	IMF%
+1.5	-0.9	+22	+2.2	+0.7	+0.9	+0.7	-0.5
59%	45%	59%	58%	64%	62%	57%	57%

Comments: A typically sound, well-balanced Ratanui Lad 21 daughter here, out of a great 15 year-old cow who produced 13 calves in 13 years. Mated to M564, M415 and M257.

BREEDPLAN INDEXES

SR +\$67 **AP** +\$80

Purchaser:

PRICE: \$

Lot: 26 MEADOWSLEA N462

Birth Date: 01/10/17

ID No: 19134117462

└ TURIHAUA CRUMP E5 (ET) └ TURIHAUA CRUMBLE Y167
└ TURIHAUA Q263
MEADOWSLEA K811
└ MEADOWSLEA E399 └ MEADOWSLEA 70
└ MEADOWSLEA A333

└ GLANWORTH WAIGROUP └ SHALOM WAIGROUP 101/01
└ 0816 └ GLANWORTH WAIGROUP 226 (ET)
MEADOWSLEA J543
└ MEADOWSLEA A412 └ MEADOWSLEA 116
└ MEADOWSLEA 140

2019 AUSTRALASIAN GROUP BREEDPLAN EBVS

DIR	DTRS	GL	BW	200	400	600	MCW	Milk
-1.1	-0.2	-4.2	+4.1	+25	+53	+77	+80	+14
39%	30%	45%	71%	64%	63%	69%	63%	46%

SS	DTC	CW	EMA	Rib Fat	Rump	RBV (%)	IMF%
+1.5	-3.4	+26	+1.2	-0.1	+0.1	+0.5	-0.3
49%	41%	53%	52%	57%	56%	51%	45%

Comments: A K811 daughter out of a cow by Glanworth 16. She is a nice clean-cut, sound type of a heifer. Mated to the K703 sons N157 and N431, followed by N362 and N368.

BREEDPLAN INDEXES

SR +\$70 **AP** +\$90

Purchaser:

PRICE: \$

Lot: 27 MEADOWSLEA N412

Birth Date: 16/09/17

ID No: 19134117412

└ MEADOWSLEA 159 └ TE MANIA UNLIMITED U3271 (IMP AUS)
└ MEADOWSLEA 410
MEADOWSLEA J479
└ MEADOWSLEA 159 └ KOROMIKO INTENT U3
└ MEADOWSLEA 933

└ GLANWORTH WAIGROUP └ SHALOM WAIGROUP 101/01
└ 0816 └ GLANWORTH WAIGROUP 226 (ET)
MEADOWSLEA J491
└ MEADOWSLEA D044 └ MEADOWSLEA 159
└ MEADOWSLEA 9115

2019 AUSTRALASIAN GROUP BREEDPLAN EBVS

DIR	DTRS	GL	BW	200	400	600	MCW	Milk
-3.1	-1.0	-1.9	+4.8	+28	+56	+77	+83	+11
42%	32%	54%	73%	67%	68%	67%	63%	49%

SS	DTC	CW	EMA	Rib Fat	Rump	RBV (%)	IMF%
+3.0	-4.0	+29	-0.1	+1.3	+1.3	+0.2	+0.2
55%	43%	56%	57%	64%	61%	57%	56%

Comments: A smooth, clean-shouldered J479 daughter with scrotal size and fat EBVs in the top 10% for breed. Mated to N157 and N431 followed by N362 and N368.

BREEDPLAN INDEXES

SR +\$72 **AP** +\$88

Purchaser:

PRICE: \$



Lot: 28 MEADOWSLEA N444

Birth Date: 28/09/17

ID No: 19134117444

MEADOWSLEA 159
MEADOWSLEA J479

MEADOWSLEA 159

MEADOWSLEA G914
MEADOWSLEA K702

MEADOWSLEA H104

TE MANIA UNLIMITED U3271 (IMP AUS)
MEADOWSLEA 410

KOROMIKO INTENT U3
MEADOWSLEA 933

GLANWORTH WAIGROUP 0816
MEADOWSLEA D101

TURIHAUA CRUMP E5 (ET)
MEADOWSLEA F687

2019 AUSTRALASIAN GROUP BREEDPLAN EBVS

DIR	DTRS	GL	BW	200	400	600	MCW	Milk
-1.4	-2.0	-2.6	+4.5	+30	+63	+83	+77	+12
39%	29%	51%	63%	65%	66%	64%	59%	46%

SS	DTC	CW	EMA	Rib Fat	Rump	RBV (%)	IMF%
+2.5	-4.6	+30	+1.9	+0.7	+0.8	+0.8	-0.1
54%	40%	54%	56%	63%	60%	56%	55%

Comments: Another very similar, sound J479 daughter, N444 is very well bred. Her grandam H104 is the dam of M452, sold for \$17,000 to Peak Hill in 2018 and used over stud cows this year, and is also the mother of the retained stud bull L226. Mated to N465 followed by N361.

BREEDPLAN INDEXES

SR +\$93 **AP** +\$106

Purchaser:

PRICE: \$

Lot: 29 MEADOWSLEA N370

Birth Date: 30/10/17

ID No: 19134117370

MEADOWSLEA G914
MEADOWSLEA L252

MEADOWSLEA G1035

MEADOWSLEA J514
MEADOWSLEA L317

MEADOWSLEA F556

GLANWORTH WAIGROUP 0816
MEADOWSLEA D101

MEADOWSLEA C804
MEADOWSLEA C1024

MEADOWSLEA F540
MEADOWSLEA B690

STERN 0713
MEADOWSLEA D110

2019 AUSTRALASIAN GROUP BREEDPLAN EBVS

DIR	DTRS	GL	BW	200	400	600	MCW	Milk
+2.1	--	-4.0	+3.6	+38	+69	+87	+79	+16
35%		37%	69%	64%	65%	62%	60%	40%

SS	DTC	CW	EMA	Rib Fat	Rump	RBV (%)	IMF%
+2.2	-5.5	+38	+4.0	+3.1	+3.9	-1.3	+1.3
50%	35%	53%	53%	61%	58%	53%	52%

Comments: A heifer's calf by the good L252 yearling who was sold to Reece Whitelock. A good back-end and great figures here - good calving ease and low birthweight, with plenty of growth and fats in the top 1% for the breed. Exceptional scanning with very good EMA and the top raw marbling figure of 8. Mated to Ratanui Nugget, N381, N298.

BREEDPLAN INDEXES

SR +\$118 **AP** +\$128

Purchaser:

PRICE: \$

Lot: 30 MEADOWSLEA N162

Birth Date: 19/09/17

ID No: 19134117162

GLANWORTH WAIGROUP
0816

MEADOWSLEA G914

MEADOWSLEA D101

MEADOWSLEA B571
MEADOWSLEA K042

MEADOWSLEA C808

SHALOM WAIGROUP 101/01
GLANWORTH WAIGROUP 226 (ET)

MEADOWSLEA B627
MEADOWSLEA B716

MEADOWSLEA 123
MEADOWSLEA 131

MEADOWSLEA A350
MEADOWSLEA A387

2019 AUSTRALASIAN GROUP BREEDPLAN EBVS

DIR	DTRS	GL	BW	200	400	600	MCW	Milk
+1.5	-0.2	-2.9	+3.4	+29	+56	+68	+48	+9
42%	31%	42%	74%	68%	68%	72%	67%	51%

SS	DTC	CW	EMA	Rib Fat	Rump	RBV (%)	IMF%
+1.3	-4.4	+24	+3.0	+3.2	+3.9	-0.8	-0.2
57%	45%	57%	57%	63%	62%	57%	56%

Comments: An easy-doing G914 daughter with rib and rump fats in the top 1% for the breed, this heifer is thick and deep with a very good back end. Mated to N465 followed by N361.

BREEDPLAN INDEXES

SR +\$99 **AP** +\$96

Purchaser:

PRICE: \$



Lot: 31 MEADOWSLEA N421

Birth Date: 20/09/17

ID No: 19134117421

MEADOWSLEA G914
MEADOWSLEA K703
 MEADOWSLEA H126
 TURIHAUA CRUMP E5 (ET)
MEADOWSLEA J648
 MEADOWSLEA B621

GLANWORTH WAIGROUP 0816
 MEADOWSLEA D101
 TURIHAUA CRUMP E5 (ET)
 MEADOWSLEA F545
 TURIHAUA CRUMBLE Y167
 TURIHAUA Q263
 MEADOWSLEA 104
 MEADOWSLEA 281

2019 AUSTRALASIAN GROUP BREEDPLAN EBVS

DIR	DTRS	GL	BW	200	400	600	MCW	Milk
+2.9	+1.2	-5.0	+2.7	+25	+53	+68	+65	+10
41%	30%	45%	74%	68%	67%	72%	67%	46%

SS	DTC	CW	EMA	Rib Fat	Rump	RBV (%)	IMF%
+1.4	-6.9	+20	+4.5	+1.0	+0.9	+0.8	-0.4
56%	41%	57%	56%	63%	61%	56%	55%

Comments: A deep, thick K703 daughter, out of a Crump cow who is breeding well. EBVs show good calving ease, low birthweight with good muscle and fats. Mated to M564, N415 and N257.

Breedplan Indexes

SR +\$106 **AP** +\$113

Purchaser:

PRICE: \$

Lot: 32 MEADOWSLEA N319

Birth Date: 15/10/17

ID No: 19134117319

WAITERENUI ALLIANCE F084
WAITERENUI ALLIANCE J144
 WAITERENUI TULIP C113
 STERN 0713
MEADOWSLEA G885
 MEADOWSLEA A411

WAITERENUI ALLIANCE C85
 WAITERENUI MERRY MAID D65
 TE MANIA UNLIMITED U3271 (IMP AUS)
 WAITERENUI TULIP 813
 HIGHLANDER OF STERN
 STERN 5183
 MEADOWSLEA 146
 MEADOWSLEA 139

2019 AUSTRALASIAN GROUP BREEDPLAN EBVS

DIR	DTRS	GL	BW	200	400	600	MCW	Milk
-0.3	-3.3	-3.8	+4.9	+35	+64	+85	+84	+15
40%	29%	52%	73%	67%	68%	66%	62%	49%

SS	DTC	CW	EMA	Rib Fat	Rump	RBV (%)	IMF%
+0.8	-3.3	+37	+2.4	+1.0	+1.6	-0.9	+1.8
57%	39%	56%	57%	63%	61%	56%	55%

Comments: A very sound, well-balanced Waiterenui J144 daughter, she is a deep, thick, easy-doing type. Her mother bred a bull sold to Macauley Station last year for \$9000. Mated to the G914 sons N146, N228 then N362 and N368.

Breedplan Indexes

SR +\$90 **AP** +\$113

Purchaser:

PRICE: \$

Lot: 33 MEADOWSLEA N128

Birth Date: 11/09/17

ID No: 19134117128

MATAURI REALITY 839
MEADOWSLEA L141
 MEADOWSLEA C949
 MEADOWSLEA J514
MEADOWSLEA L276
 MEADOWSLEA D056

SCHURRTOP REALITY X723
 MATAURI 06663
 PIKO BURN 31-03
 MEADOWSLEA 739
 MEADOWSLEA F540
 MEADOWSLEA B690
 MEADOWSLEA 159
 MEADOWSLEA 1114

2019 AUSTRALASIAN GROUP BREEDPLAN EBVS

DIR	DTRS	GL	BW	200	400	600	MCW	Milk
+2.7	+1.9	-4.9	+2.6	+31	+62	+71	+69	+14
39%	31%	51%	61%	63%	65%	61%	58%	46%

SS	DTC	CW	EMA	Rib Fat	Rump	RBV (%)	IMF%
+2.9	-6.6	+32	+2.9	+3.1	+3.4	-1.4	+1.8
52%	38%	53%	55%	62%	59%	55%	53%

Comments: Exceptional fertility traits in this Matauri Reality granddaughter. Out of a 2-year heifer who goes back to F540, her maternal grandam was the top price cow in our inaugural female sale, sold to Linnburn Station for \$5000. Great calving ease, DTC and rib and rump fat figures, she also scanned with a marbling figure of 7.2. Mated to the Goldwyn 17 son N465, followed by N361.

Breedplan Indexes

SR +\$118 **AP** +\$125

Purchaser:

PRICE: \$



The Meadowslea hill-country type

Visual appraisal is still very important for selecting cattle to perform in hill - country

MASCULINE TRAITS - A strong head and jaw and thick neck indicate high levels of libido, testosterone and reproduction efficiency

NECK LENGTH - A thicker necked animal matures and reaches puberty earlier and has more libido

A longer neck indicates a higher maintenance animal that is slower to reach puberty and re-breed

HEART GIRTH - Large heart girth is an indicator of vigor and easy keeping ability

Small heart girth animals are more susceptible to stress, are higher maintenance and do not perform well on tussock

RIB FAT - Strong rib fat covers are the essential energy store for adverse conditions.

They indicate easy-doing and finishing ability and are directly related to increased fertility in both heifers and cows.

STRUCTURAL SOUNDNESS, FEET AND BONE - High country cattle cover large distances over rugged terrain so a strong skeleton is essential

HIDE - a good thick skin and coat is essential in the cold harsh environment

FLANK - Deep flanked animals are easier keeping, have more meat in the rump and have more maternal and reproductive efficiency

Higher flanked animals tend to be flighty, are higher maintenance and take longer to finish on grass

SCROTAL SIZE - Larger scrotal size at 12 months indicates daughters will reach puberty earlier, be more fertile, and re-breed early every year.



BRED FOR THE HILL COUNTRY

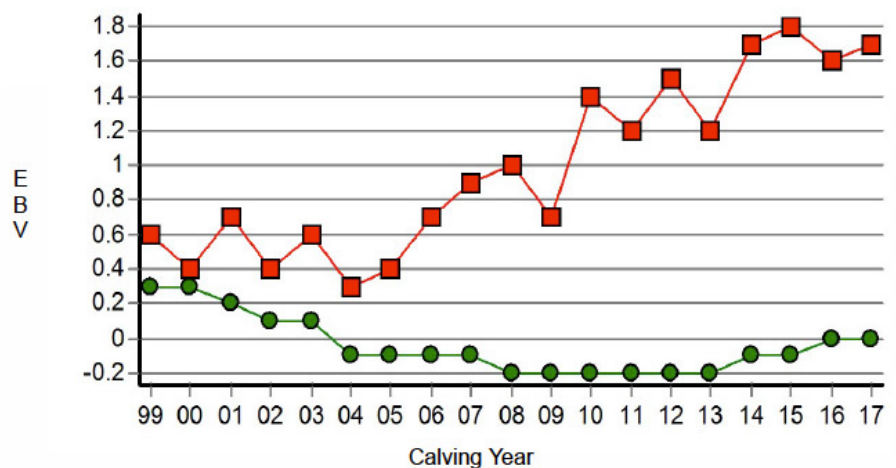
The development of the Meadowslea hill - country type has been the result of 25 years of selecting animals that perform the best in our hash hill country environment. Cows that can winter easily on the hill without supplements, stay in good order, calve easily and get back in calf early every year for 10 years has been the focus of our breeding programme. By putting pressure on cows to winter on native hill blocks it quickly became apparent that some animals could manage well in this environment and would easily get back in calf the next year, while those that struggled would be too light going to the bull, and either calve later each year, or come through dry.

Those that were dry or were not holding their condition well enough were removed from the stud herd, while the "easy-doing" types thrived and passed their genetics on to the next generation. It was clear that it was the cows with good fat covers going in to the winter that were consistently performing the best in our environment.

Ultrasound scanning is performed on all yearling bulls in early spring, and on the heifers in the autumn. For us, the most important data is the rib and rump fat cover measurement - we have found these strongly correlate with those easy doing characteristics, and we now put a lot of emphasis on this when selecting bulls to use and heifers to retain. This is reflected in Meadowslea having some of the highest fat EBVs on the Australasian Angus BreedPlan system.

These great positive fat EBVs in the Meadowslea herd have come about simply by selecting animals that suit the hill country environment.

Carcase Rib Fat (mm)



Graph showing improvement in fat EBVs at Meadowslea while running the herd on hill country, compared with Australasian average. From Angus Breedplan report March 2019.

■ Meadowslea herd
● Australasian herd average

The average rib fat EBV of the females in this catalogue ranks in the top 10% for the breed in Australasia.

Meadowslea Stud 2yr Heifers and their calves on high tussock.





Meadowslea Stud cows and calves come off the hill for weaning



Meadowslea Stud cows after weaning - job done for another year!

Lot: 34 MEADOWSLEA N133

Birth Date: 13/09/17

ID No: 19134117133

TE MANIA INFINITY 04 379
GOLDWYN 017
 GOLDWYN 05-595
 MEADOWSLEA C804
MEADOWSLEA E453
 MEADOWSLEA B698

TE MANIA UNLIMITED U3271 (IMP AUS)
 TE MANIA 95102
 TE MANIA ULONG U41 (IMP AUS)
 GOLDWYN 617
 MEADOWSLEA A325
 MEADOWSLEA A300
 FARFIELD AVORIO 316
 MEADOWSLEA 140

2019 AUSTRALASIAN GROUP BREEDPLAN EBVS

DIR	DTRS	GL	BW	200	400	600	MCW	Milk
-0.7	-3.3	-3.9	+4.0	+30	+62	+79	+80	+13
47%	40%	52%	74%	69%	70%	68%	66%	59%

SS	DTC	CW	EMA	Rib Fat	Rump	RBV (%)	IMF%
+1.9	-5.9	+33	+2.9	-0.5	+0.7	+0.0	+1.5
58%	51%	59%	59%	66%	63%	59%	59%

Comments: A Goldwyn 17 daughter with a bit more scale and frame, and good potential. Mated to the K703 sons N157, N431 followed by N362 and N368.

BREEDPLAN INDEXES

SR	+\$98	AP	+\$117
-----------	-------	-----------	--------

Purchaser:

PRICE: \$

Lot: 35 MEADOWSLEA N442

Birth Date: 25/09/17

ID No: 19134117442

TE MANIA INFINITY 04 379
GOLDWYN 017
 GOLDWYN 05-595
 MEADOWSLEA H122
MEADOWSLEA K933
 MEADOWSLEA 251

TE MANIA UNLIMITED U3271 (IMP AUS)
 TE MANIA 95102
 TE MANIA ULONG U41 (IMP AUS)
 GOLDWYN 617
 MEADOWSLEA F540
 MEADOWSLEA F612
 MEADOWSLEA D140
 MEADOWSLEA 207

2019 AUSTRALASIAN GROUP BREEDPLAN EBVS

DIR	DTRS	GL	BW	200	400	600	MCW	Milk
+1.3	-1.1	-5.0	+2.3	+26	+57	+70	+64	+16
43%	37%	51%	73%	68%	67%	72%	68%	52%

SS	DTC	CW	EMA	Rib Fat	Rump	RBV (%)	IMF%
+2.0	-6.9	+28	+1.5	+0.4	+1.2	-0.2	+0.8
55%	47%	58%	57%	64%	62%	57%	57%

Comments: Another similar Goldwyn 17 daughter with some scale as well as good calving ease, low birthweight, short DTC and good fats. Mated to the G914 sons N146 and N228, followed by N362 and N368.

BREEDPLAN INDEXES

SR	+\$99	AP	+\$108
-----------	-------	-----------	--------

Purchaser:

PRICE: \$

Lot: 36 MEADOWSLEA N461

Birth Date: 01/10/17

ID No: 19134117461

TURIHAUA CRUMBLE Y167
RATANUI LAD 21
 RATANUI 06 666
 MEADOWSLEA H120
MEADOWSLEA K874
 MEADOWSLEA D015

TURIHAUA GAMBO W29
 TURIHAUA W275
 SPRINGDALE HERCO 642
 RATANUI 359
 MEADOWSLEA F737
 MEADOWSLEA F780
 MEADOWSLEA B611
 MEADOWSLEA B639

2019 AUSTRALASIAN GROUP BREEDPLAN EBVS

DIR	DTRS	GL	BW	200	400	600	MCW	Milk
+3.5	+1.3	-5.3	+1.9	+21	+47	+54	+50	+18
38%	29%	38%	73%	67%	67%	72%	66%	46%

SS	DTC	CW	EMA	Rib Fat	Rump	RBV (%)	IMF%
+1.5	-4.0	+17	+3.5	+1.6	+2.3	-0.2	+0.6
55%	38%	56%	56%	63%	61%	56%	55%

Comments: A Ratanui Lad 21 daughter with some potential. Square and sound with a very good coat. Out of a very good young cow whose first calf M1004 was sold for stud to Pikoburn Angus for \$10,000. Low birthweight, calving ease and fats all in the top 10% for breed. Mated to N465 and N361.

BREEDPLAN INDEXES

SR	+\$91	AP	+\$92
-----------	-------	-----------	-------

Purchaser:

PRICE: \$



Lot: 37
MEADOWSLEA N464

Birth Date: 01/10/17
ID No: 19134117464

MEADOWSLEA 159

MEADOWSLEA J479

MEADOWSLEA 159

STERN 68

MEADOWSLEA A474

MEADOWSLEA 774

TE MANIA UNLIMITED U3271 (IMP AUS)
MEADOWSLEA 410

KOROMIKO INTENT U3
MEADOWSLEA 933

STERN 512
STERN 999235

GLEN R ABSOLUTE
MEADOWSLEA 319

2019 AUSTRALASIAN GROUP BREEDPLAN EBVS

DIR	DTRS	GL	BW	200	400	600	MCW	Milk
-3.3	-0.7	-2.3	+6.0	+33	+62	+84	+96	+7
41%	31%	53%	65%	66%	67%	66%	60%	52%

SS	DTC	CW	EMA	Rib Fat	Rump	RBV (%)	IMF%
+1.6	-2.7	+36	+1.4	-0.4	-0.1	+1.0	+0.1
57%	42%	56%	55%	62%	60%	55%	54%

Comments: A J479 daughter out of a great old cow who has given us 11 calves in 11 years, and who weaned N464 to the second highest weaning weight of the year - some scale and size here. Mated to the K703 sons N157, N431, followed by N362 and N368.

Breedplan Indexes

SR	+ \$78	AP	+ \$97
----	--------	----	--------

Purchaser:

PRICE: \$

Lot: 38
MEADOWSLEA N328

Birth Date: 21/10/17
ID No: 19134117328

PINEBANK 89/05

GLANWORTH WAIGROUP 14129

GLANWORTH WAIGROUP 11198

GOLDWYN 017

MEADOWSLEA L192

MEADOWSLEA H146

GLANWORTH 740
PINEBANK WAIGROUP 105/03

WAITERENUI MYTTY E101
GLANWORTH WAIGROUP 0948

TE MANIA INFINITY 04 379
GOLDWYN 05-595

TURIHAUA CRUMP E5 (ET)
MEADOWSLEA F536

2019 AUSTRALASIAN GROUP BREEDPLAN EBVS

DIR	DTRS	GL	BW	200	400	600	MCW	Milk
+0.6	-1.2	-4.1	+3.9	+40	+81	+102	+99	+18
37%	29%	44%	68%	63%	64%	62%	59%	43%

SS	DTC	CW	EMA	Rib Fat	Rump	RBV (%)	IMF%
+1.9	-4.1	+48	+4.1	+0.3	+0.1	-0.2	+1.2
50%	35%	53%	53%	61%	58%	54%	53%

Comments: A Glanworth 14-129 daughter with some scope and growth, out of a 2-year Goldwyn 17 heifer. Maternal grandam H146 is a great cow with top sons sold to Matt Mackenzie at \$15,500 and Peak Hill at \$8000. Plenty of performance here with a top 400 day, EMA and her marbling scan of 7.2 in the top 1% of her year group. Mated to the K703 sons N157 and N431, followed by N362 and N368.

Breedplan Indexes

SR	+ \$119	AP	+ \$139
----	---------	----	---------

Purchaser:

PRICE: \$



Lot: 39

MEADOWSLEA N244

Birth Date: 29/09/17

ID No: 19134117244

MEADOWSLEA D227

MEADOWSLEA F540

MEADOWSLEA D042

MEADOWSLEA H119

MEADOWSLEA K867

MEADOWSLEA G1076

MEADOWSLEA 70

MEADOWSLEA 143

FLORIDALE YELET

MEADOWSLEA A300

TURIHAUA CRUMP E5 (ET)

MEADOWSLEA F555

MEADOWSLEA C804

MEADOWSLEA D214

Comments: An F540 daughter out of a Crump granddaughter, N244 has some scale about her. As usual for an F540 she has excellent maternal and fertility traits with milk, DTC, and fats all in the top 5% for the breed. Mated to the G914 sons N146 and N228, followed up by N362 and N368.

2019 AUSTRALASIAN GROUP BREEDPLAN EBVS								
DIR	DTRS	GL	BW	200	400	600	MCW	Milk
+2.4	-0.3	-6.3	+3.9	+35	+72	+99	+98	+24
46%	35%	53%	75%	70%	69%	74%	70%	57%
SS	DTC	CW	EMA	Rib Fat	Rump	RBY (%)	IMF%	
+2.5	-7.7	+39	+1.7	+2.2	+2.7	-0.7	-0.3	
58%	50%	60%	60%	66%	64%	60%	59%	

BREEDPLAN INDEXES

SR

+\$113

AP

+\$128

Purchaser:

PRICE: \$

Lot: 40

MEADOWSLEA N481

Birth Date: 07/10/17

ID No: 19134117481

TURIHAUA CRUMBLE Y167

RATANUI LAD 21

RATANUI 06 666

MEADOWSLEA C872

MEADOWSLEA E311

MEADOWSLEA C989

TURIHAUA GAMBO W29

TURIHAUA W275

SPRINGDALE HERCO 642

RATANUI 359

HIGHLANDER OF STERN

MEADOWSLEA 43

MEADOWSLEA A458

MEADOWSLEA 928

Comments: A Ratanui 21 daughter with some size and scale, out of a top performing cow who has produced 7 in 7 and is still going strong. Good calving ease with great fats in the top 10% for the breed. Mated to M564 followed by N257 and N415.

2019 AUSTRALASIAN GROUP BREEDPLAN EBVS								
DIR	DTRS	GL	BW	200	400	600	MCW	Milk
+0.7	-1.2	-3.6	+4.4	+30	+55	+70	+67	+13
42%	34%	44%	73%	67%	68%	67%	63%	52%
SS	DTC	CW	EMA	Rib Fat	Rump	RBY (%)	IMF%	
+1.1	-4.1	+24	+1.9	+1.3	+2.0	-0.3	+0.4	
56%	40%	56%	56%	63%	61%	56%	56%	

BREEDPLAN INDEXES

SR

+\$86

AP

+\$92

Purchaser:

PRICE: \$



Lot: 41 MEADOWSLEA M476

Birth Date: 14/09/16

ID No: 19134116476

└ GOLDWYN 017
MEADOWSLEA K018
└ MEADOWSLEA G1010
└ MEADOWSLEA H209
MEADOWSLEA K710
└ MEADOWSLEA H108

└ TE MANIA INFINITY 04 379
GOLDWYN 05-595
└ STERN 0713
MEADOWSLEA C810
└ TURIHAUA CRUMP E5 (ET)
MEADOWSLEA D239
└ MEADOWSLEA F737
MEADOWSLEA F530

2019 AUSTRALASIAN GROUP BREEDPLAN EBVS

DIR	DTRS	GL	BW	200	400	600	MCW	Milk
+0.2	-2.1	-5.9	+3.7	+34	+67	+85	+79	+16
37%	27%	47%	72%	66%	65%	71%	64%	42%

SS	DTC	CW	EMA	Rib Fat	Rump	RBV (%)	IMF%
+2.2	-7.9	+38	+1.3	+2.9	+4.0	-1.8	+1.6
52%	38%	54%	54%	62%	60%	54%	53%

Comments: A great type of cow to start this age-group, well-balanced with a lovely topline and maternal appearance. M476 is a daughter of K018, who bred well as a yearling before being sold to Matt Mackenzie for \$10,000. She has strong fertility traits with DTC and fats in the top 5% for the breed and has just weaned a thumping good calf. Mated to F540 followed by his sons N270 and N214.

BREEDPLAN INDEXES

SR	+111	AP	+125
----	------	----	------

Purchaser:

PRICE: \$

Lot: 42 MEADOWSLEA M503

Birth Date: 19/09/16

ID No: 19134116503

└ TURIHAUA CRUMBLE Y167
TURIHAUA CRUMP E5 (ET)
└ TURIHAUA Q263
└ ACHIEVER A320 OF KEN-
HARDT
MEADOWSLEA F756
└ MEADOWSLEA A398

└ TURIHAUA GAMBO W29
TURIHAUA W275
└ HINGAIA 121
TURIHAUA M264
└ STERN EXACT 185 (ET)
X733 OF KENHARDT
└ MEADOWSLEA 104
MEADOWSLEA 162

2019 AUSTRALASIAN GROUP BREEDPLAN EBVS

DIR	DTRS	GL	BW	200	400	600	MCW	Milk
-2.8	-3.1	-3.1	+4.4	+32	+65	+85	+88	+15
50%	42%	59%	74%	69%	70%	69%	67%	60%

SS	DTC	CW	EMA	Rib Fat	Rump	RBV (%)	IMF%
+1.4	-6.7	+30	+3.5	+2.7	+2.6	-0.9	+0.2
60%	53%	61%	61%	67%	64%	61%	61%

Comments: A Crump daughter out of an Achiever of Kenhardt cow who is breeding well. Plenty of performance with the 2nd heaviest 400 day of her group, she also scanned with very good EMA, fats, and marbling. Breedplan EBVs show DTC in the top 10% for the breed. Mated to the new Rangatira 209 bull, followed up by Turiroa 14-830.

BREEDPLAN INDEXES

SR	+\$89	AP	+\$99
----	-------	----	-------

Purchaser:

PRICE: \$

Lot: 43 MEADOWSLEA M602

Birth Date: 30/09/16

ID No: 19134116602

└ MEADOWSLEA 159
MEADOWSLEA J479
└ MEADOWSLEA 159
└ GLANWORTH WAIGROUP
0816
MEADOWSLEA G888
└ MEADOWSLEA D239

└ TE MANIA UNLIMITED U3271 (IMP AUS)
MEADOWSLEA 410
└ KOROMIKO INTENT U3
MEADOWSLEA 933
└ SHALOM WAIGROUP 101/01
GLANWORTH WAIGROUP 226 (ET)
└ ACHIEVER A320 OF KENHARDT
MEADOWSLEA 638

2019 AUSTRALASIAN GROUP BREEDPLAN EBVS

DIR	DTRS	GL	BW	200	400	600	MCW	Milk
-1.8	-0.6	-2.2	+4.4	+33	+67	+91	+89	+13
41%	31%	53%	73%	67%	67%	72%	66%	49%

SS	DTC	CW	EMA	Rib Fat	Rump	RBV (%)	IMF%
+2.6	-5.8	+37	+0.1	+1.7	+1.9	-0.2	+0.0
56%	43%	57%	56%	63%	61%	56%	55%

Comments: A smooth, easy-doing and productive-looking J479 daughter with a lovely top line. Out of a good dam who bred a top bull J407, sold to Roger Pearce for \$10,000. A nice set of data with very strong scrotal and fats. Has just weaned a very good calf. Mated to N119 then Ratanui Nugget, followed by Goldwyn 17.

BREEDPLAN INDEXES

SR	+\$96	AP	+\$112
----	-------	----	--------

Purchaser:

PRICE: \$



Lot: 44 MEADOWSLEA M1038

Birth Date: 23/09/16

ID No: 191341161038

MEADOWSLEA 159	TE MANIA UNLIMITED U3271 (IMP AUS)
MEADOWSLEA J479	MEADOWSLEA 410
MEADOWSLEA 159	KOROMIKO INTENT U3
	MEADOWSLEA 933
TURIHAUA CRUMP E5 (ET)	TURIHAUA CRUMBLE Y167
MEADOWSLEA J534	TURIHAUA Q263
MEADOWSLEA B652	MEADOWSLEA 36
	MEADOWSLEA 195

2019 AUSTRALASIAN GROUP BREEDPLAN EBVS

DIR	DTRS	GL	BW	200	400	600	MCW	Milk
-4.5	-4.7	-2.4	+6.0	+37	+74	+97	+105	+11
41%	33%	55%	73%	67%	68%	66%	62%	48%

SS	DTC	CW	EMA	Rib Fat	Rump	RBV (%)	IMF%
+2.9	-4.6	+38	+1.0	+0.4	+0.8	-0.1	+1.1
55%	42%	56%	56%	63%	61%	56%	56%

Comments: A nicely - balanced J479 daughter out of a Crump cow. Deep-bodied and with a moderate frame. Very strong growth figures, ranked 4th heaviest at 400 days in her group, with good scrotal and positive fats. Scanned well with very good marbling figure. Mated to the yearling N119 then Ratanui Nugget, followed by Goldwyn 17.

BREEDPLAN INDEXES

SR	+90	AP	+112
----	-----	----	------

Purchaser:

PRICE: \$

Lot: 45 MEADOWSLEA M1065

Birth Date: 03/10/16

ID No: 191341161065

WAITERENUI ALLIANCE F084	WAITERENUI ALLIANCE C85
WAITERENUI ALLIANCE J144	WAITERENUI MERRY MAID D65
WAITERENUI TULIP C113	TE MANIA UNLIMITED U3271 (IMP AUS)
	WAITERENUI TULIP 813
GOLDWYN 017	TE MANIA INFINITY 04 379
MEADOWSLEA J600	GOLDWYN 05-595
MEADOWSLEA D069	TE MANIA 05 461
	MEADOWSLEA 47

2019 AUSTRALASIAN GROUP BREEDPLAN EBVS

DIR	DTRS	GL	BW	200	400	600	MCW	Milk
+0.4	-2.3	-5.3	+3.7	+35	+67	+85	+71	+17
41%	30%	53%	73%	68%	69%	66%	62%	48%

SS	DTC	CW	EMA	Rib Fat	Rump	RBV (%)	IMF%
+1.1	-4.9	+36	+1.3	+1.8	+2.6	-1.4	+1.3
58%	38%	56%	58%	64%	62%	57%	56%

Comments: Well bred Waiterenui J144 heifer here, deep and strong with a good head and bone. Dam J600 bred a stud bull L179, who was sold as a yearling to Red Oak Stud and is the sire of some of their top sale bulls this year. She has also bred a very good bull in this year's sale line up, N474. M1065 has a nice balance of figures, with calving ease, low birthweight, good growth and strong fats. A great mate for G914, followed up by his son K703.

BREEDPLAN INDEXES

SR	+101	AP	+114
----	------	----	------

Purchaser:

PRICE: \$

Lot: 46 MEADOWSLEA M408

Birth Date: 24/08/16

ID No: 19134116408

TURIHAUA CRUMP E5 (ET)	TURIHAUA CRUMBLE Y167
MEADOWSLEA K886	TURIHAUA Q263
MEADOWSLEA F574	MEADOWSLEA D215
	MEADOWSLEA D168
MEADOWSLEA H116	MEADOWSLEA F540
MEADOWSLEA K922	MEADOWSLEA F689
MEADOWSLEA G1066	MEADOWSLEA D140
	MEADOWSLEA 156

2019 AUSTRALASIAN GROUP BREEDPLAN EBVS

DIR	DTRS	GL	BW	200	400	600	MCW	Milk
-3.1	-2.9	-3.0	+6.0	+38	+77	+98	+93	+16
35%	26%	41%	71%	64%	64%	70%	63%	42%

SS	DTC	CW	EMA	Rib Fat	Rump	RBV (%)	IMF%
+2.6	-7.7	+41	+4.1	+1.9	+2.3	-0.3	+0.5
50%	37%	54%	52%	61%	59%	53%	52%

Comments: A smooth-skinned, maternal looking cow with some balance and style. Sired by a Crump grandson out of a F540 daughter. Good performance with the top 400-day in her group and the biggest EMA, highest rib fat and 2nd best actual marbling at 5.9. She has just weaned a very good calf to boot. Great figures across the board with scrotal size, DTC and fats in the top 10% of the breed. Mated to Rangatira 209 followed by Turiroa 14-830.

BREEDPLAN INDEXES

SR	+113	AP	+126
----	------	----	------

Purchaser:

PRICE: \$



Lot: 47 MEADOWSLEA M1059

Birth Date: 29/09/16

ID No: 191341161059

MEADOWSLEA 159	TE MANIA UNLIMITED U3271 (IMP AUS)
MEADOWSLEA J479	MEADOWSLEA 410
MEADOWSLEA 159	KOROMIKO INTENT U3
	MEADOWSLEA 933
GLANWORTH WAIGROUP 0816	SHALOM WAIGROUP 101/01
MEADOWSLEA J491	GLANWORTH WAIGROUP 226 (ET)
MEADOWSLEA D044	MEADOWSLEA 159
	MEADOWSLEA 9115

2019 AUSTRALASIAN GROUP BREEDPLAN EBVS

DIR	DTRS	GL	BW	200	400	600	MCW	Milk
-0.3	+0.2	-2.6	+3.6	+28	+59	+79	+80	+12
42%	32%	54%	73%	67%	68%	67%	63%	49%

SS	DTC	CW	EMA	Rib Fat	Rump	RBV (%)	IMF%
+3.0	-3.8	+31	+0.7	+1.0	+0.9	+0.5	+0.2
55%	43%	56%	57%	64%	61%	57%	56%

Comments: A deep-bodied J479 daughter with a good top and some volume. Grandam D044 was a top breeder and was sold in last year's sale to Linton Palmer. Low birth weight with great scrotal and fat EBVs. Mated to Turihaua Crump himself, followed up by K811.

BREEDPLAN INDEXES

SR +\$89 **AP** +\$105

Purchaser:

PRICE: \$

Lot: 48 MEADOWSLEA M1042

Birth Date: 26/09/16

ID No: 191341161042

RED OAK 378	PINEBANK 21/08
MEADOWSLEA K902	TURIHAUA Z31
MEADOWSLEA D056	MEADOWSLEA 159
	MEADOWSLEA 1114
MEADOWSLEA G914	GLANWORTH WAIGROUP 0816
MEADOWSLEA K702	MEADOWSLEA D101
MEADOWSLEA H104	TURIHAUA CRUMP E5 (ET)
	MEADOWSLEA F687

2019 AUSTRALASIAN GROUP BREEDPLAN EBVS

DIR	DTRS	GL	BW	200	400	600	MCW	Milk
+3.9	+1.4	-5.1	+1.5	+26	+56	+62	+52	+13
35%	25%	39%	70%	64%	65%	63%	59%	43%

SS	DTC	CW	EMA	Rib Fat	Rump	RBV (%)	IMF%
+1.5	-6.0	+23	-0.6	+2.1	+2.3	-1.2	+0.6
50%	37%	52%	53%	61%	58%	53%	52%

Comments: A nice easy doing, well-balanced cow. Exhibits terrific maternal traits with calving ease, low birthweight and rib and rump fats in the top 5% for the breed. Well bred with grandam the mother of top keeper bulls L226 and M452. Mated to the good yearling N141 followed up by his sire Turiroa 14-830.

BREEDPLAN INDEXES

SR +\$102 **AP** +\$100

Purchaser:

PRICE: \$

Lot: 49 MEADOWSLEA M426

Birth Date: 02/09/16

ID No: 19134116426

MEADOWSLEA D227	MEADOWSLEA 70
MEADOWSLEA F540	MEADOWSLEA 143
MEADOWSLEA D042	FLORIDALE YELET
	MEADOWSLEA A300
TURIHAUA CRUMP E5 (ET)	TURIHAUA CRUMBLE Y167
MEADOWSLEA H305	TURIHAUA Q263
MEADOWSLEA D186	MEADOWSLEA 159
	MEADOWSLEA 9117

2019 AUSTRALASIAN GROUP BREEDPLAN EBVS

DIR	DTRS	GL	BW	200	400	600	MCW	Milk
+4.0	+1.4	-6.4	+1.2	+26	+60	+76	+72	+25
49%	38%	58%	75%	69%	68%	73%	69%	59%

SS	DTC	CW	EMA	Rib Fat	Rump	RBV (%)	IMF%
+2.6	-8.2	+28	+2.3	+2.7	+2.8	-1.1	+0.8
61%	52%	60%	60%	65%	63%	60%	59%

Comments: A well bred heifer here by F540, out of a top Crump cow who bred stud bull L141, sold to Linnburn Station for \$11,000. Grandam is also in this sale at lot 87. A typical F540, deep and moderate-framed with super figures- she ranks in the top 10% for all 8 fertility and maternal traits! Mated to Rangitira 209 and followed up by Turiroa 14-830.

BREEDPLAN INDEXES

SR +\$112 **AP** +\$123

Purchaser:

PRICE: \$



Lot: 50 MEADOWSLEA M1092

Birth Date: 06/11/16

ID No: 191341161092

GLANWORTH WAIGROUP 0816
MEADOWSLEA G914
 MEADOWSLEA D101

SHALOM WAIGROUP 101/01
 GLANWORTH WAIGROUP 226 (ET)

MEADOWSLEA B627
 MEADOWSLEA B716

GLANWORTH WAIGROUP 0816
MEADOWSLEA J628
 MEADOWSLEA E342

SHALOM WAIGROUP 101/01
 GLANWORTH WAIGROUP 226 (ET)

MEADOWSLEA 159
 MEADOWSLEA 140

2019 AUSTRALASIAN GROUP BREEDPLAN EBVS

DIR	DTRS	GL	BW	200	400	600	MCW	Milk
+3.0	+1.5	-3.2	+2.2	+25	+55	+70	+54	+10
46%	35%	50%	74%	70%	70%	69%	66%	55%

SS	DTC	CW	EMA	Rib Fat	Rump	RBV (%)	IMF%
+2.0	-5.2	+27	+2.3	+2.0	+2.0	+0.4	-0.9
59%	48%	59%	60%	66%	64%	59%	59%

Comments: A thick, deep, easy-doing G914 daughter with a great back end. She also has good fertility and maternal traits with calving ease, low birth weight and short days to calving which together with a good scrotal size EBV and strong fats make a great hill country set of figures. Real thickness and easy-doing in this pedigree with Glanworth 16 on both sides. Mated to the top Crump yearling N166, followed by K811.

BREEDPLAN INDEXES

SR	+\$104	AP	+\$106
----	--------	----	--------

Purchaser:

PRICE: \$

Lot: 51 MEADOWSLEA M1080

Birth Date: 14/10/16

ID No: 191341161080

GLANWORTH WAIGROUP 0816
MEADOWSLEA G914
 MEADOWSLEA D101

SHALOM WAIGROUP 101/01
 GLANWORTH WAIGROUP 226 (ET)

MEADOWSLEA B627
 MEADOWSLEA B716

MEADOWSLEA E303
MEADOWSLEA G850
 MEADOWSLEA E362

WOODBANK BLACKPOWER 06
 MEADOWSLEA 280

PIKO BURN CHAR 26-06
 MEADOWSLEA 106

2019 AUSTRALASIAN GROUP BREEDPLAN EBVS

DIR	DTRS	GL	BW	200	400	600	MCW	Milk
+4.2	+2.6	-3.7	+1.4	+24	+49	+60	+36	+10
42%	31%	44%	73%	68%	69%	67%	64%	53%

SS	DTC	CW	EMA	Rib Fat	Rump	RBV (%)	IMF%
+1.7	-3.4	+21	+4.4	+1.0	+1.3	+0.9	-0.4
58%	45%	57%	58%	64%	62%	57%	57%

Comments: Exceptional calving ease and low birthweight breeding values in this G914 daughter, very similar to the last. She also has great muscle and fats, very strong calving ease (also in the top 5% of the breed), and good low birth weight. She just weaned a very good calf. A deep, solid type well suited to hill-country. Mated to Crump sons - N166 followed by K811.

BREEDPLAN INDEXES

SR	+\$105	AP	+\$105
----	--------	----	--------

Purchaser:

PRICE: \$

Lot: 52 MEADOWSLEA M1012

Birth Date: 07/09/16

ID No: 191341161012

MEADOWSLEA 159
MEADOWSLEA J479
 MEADOWSLEA 159

TE MANIA UNLIMITED U3271 (IMP AUS)
 MEADOWSLEA 410

KOROMIKO INTENT U3
 MEADOWSLEA 933

KAHARAU 07-558
MEADOWSLEA F725
 MEADOWSLEA 44

RANGATIRA GERONIMO 843
 KAHARAU 5824

MERCHISTON PLAYMATE 733 AB
 MEADOWSLEA 754

2019 AUSTRALASIAN GROUP BREEDPLAN EBVS

DIR	DTRS	GL	BW	200	400	600	MCW	Milk
-2.0	-2.5	-1.6	+5.0	+27	+58	+76	+88	+11
41%	32%	49%	74%	68%	67%	72%	67%	51%

SS	DTC	CW	EMA	Rib Fat	Rump	RBV (%)	IMF%
+2.2	-3.7	+29	+2.4	+1.4	+1.6	+0.2	+0.2
56%	44%	57%	57%	64%	61%	56%	56%

Comments: M1012 is another J479 daughter and has just weaned a very good calf. She is a clean-cut, well balanced, productive, and feminine type of cow. Her dam has given us 7 in 7 and is still in the herd while her grandam managed 9 in 9. Good longevity and fertility traits here with good scrotal figures and rib and rump fats in the top 10% of the breed. Mated to N166 followed by K811.

BREEDPLAN INDEXES

SR	+\$77	AP	+\$91
----	-------	----	-------

Purchaser:

PRICE: \$



Lot: 53 MEADOWSLEA M546

Birth Date: 24/09/16

ID No: 19134116546

WAITERENUI ALLIANCE F084 [WAITERENUI ALLIANCE C85
 WAITERENUI MERRY MAID D65
WAITERENUI ALLIANCE J144
 L WAITERENUI TULIP C113 [TE MANIA UNLIMITED U3271 (IMP AUS)
 WAITERENUI TULIP 813
 MEADOWSLEA 159 [TE MANIA UNLIMITED U3271 (IMP AUS)
MEADOWSLEA J448 MEADOWSLEA 410
 L MEADOWSLEA B553 [MEADOWSLEA 104
 MEADOWSLEA 181

DIR	DTRS	GL	BW	200	400	600	MCW	Milk
-3.3	-3.2	-3.3	+6.8	+37	+72	+101	+101	+13
41%	31%	61%	73%	68%	67%	72%	65%	46%

SS	DTC	CW	EMA	Rib Fat	Rump	RBV (%)	IMF%
+2.0	-3.7	+40	+1.4	-0.2	+0.1	+0.7	+0.1
56%	39%	57%	57%	63%	61%	56%	55%

Comments: A Waiterenui Alliance daughter with very good growth. Great sound type with very good top line, length, and capacity. Mated to G914 followed by K703.

BREEDPLAN INDEXES

SR	+\$88	AP	+\$113
-----------	--------------	-----------	---------------

Purchaser:

PRICE: \$

Lot: 54 MEADOWSLEA M411

Birth Date: 27/08/16

ID No: 19134116411

TURIHAUA CRUMP E5 (ET) [TURIHAUA CRUMBLE Y167
 TURIHAUA Q263
MEADOWSLEA K886
 L MEADOWSLEA F574 [MEADOWSLEA D215
 MEADOWSLEA D168
 MEADOWSLEA F540 [MEADOWSLEA D227
MEADOWSLEA K813 MEADOWSLEA D042
 L MEADOWSLEA E311 [MEADOWSLEA C872
 MEADOWSLEA C989

DIR	DTRS	GL	BW	200	400	600	MCW	Milk
-0.1	-1.8	-3.9	+5.3	+31	+66	+90	+94	+18
39%	29%	46%	71%	65%	65%	71%	65%	46%

SS	DTC	CW	EMA	Rib Fat	Rump	RBV (%)	IMF%
+2.1	-6.5	+33	+3.1	-0.4	+0.0	+0.7	+0.2
52%	40%	55%	55%	62%	60%	55%	53%

Comments: A Crump granddaughter out of an F540 cow, she has just weaned a very good calf. Grandam bred a top bull sold to Dovedale. M411 has good depth and a nice top line, together with good growth with very strong scrotal figures. Mated to N141 followed by his sire Turiroa 14-830.

BREEDPLAN INDEXES

SR	+\$99	AP	+\$121
-----------	--------------	-----------	---------------

Purchaser:

PRICE: \$

Lot: 55 MEADOWSLEA M563

Birth Date: 26/09/16

ID No: 19134116563

TE MANIA INFINITY 04 379 [TE MANIA UNLIMITED U3271 (IMP AUS)
 TE MANIA 95102
GOLDWYN 017
 L GOLDWYN 05-595 [TE MANIA ULONG U41 (IMP AUS)
 GOLDWYN 617
 HIGHLANDER OF STERN [TE MANIA UNLIMITED U3271 (IMP AUS)
MEADOWSLEA F637 STERN 2664
 L MEADOWSLEA 1123 [GLEN R ABSOLUTE
 MEADOWSLEA 814

DIR	DTRS	GL	BW	200	400	600	MCW	Milk
-3.7	-5.5	-2.1	+4.9	+35	+69	+89	+80	+12
50%	44%	63%	75%	70%	70%	75%	70%	60%

SS	DTC	CW	EMA	Rib Fat	Rump	RBV (%)	IMF%
+2.0	-7.4	+39	+0.8	-0.5	+1.2	-0.9	+2.3
61%	52%	61%	61%	67%	65%	61%	60%

Comments: A nicely- balanced Goldwyn daughter with a good topline, who has just weaned a great calf. She scanned with a very good marbling figure. Her dam is a good-breeding Highlander cow and her grandam had outstanding longevity producing 12 in 12. Mated to N119 and Ratanui Nugget, followed by Goldwyn 17.

BREEDPLAN INDEXES

SR	+\$99	AP	+\$123
-----------	--------------	-----------	---------------

Purchaser:

PRICE: \$



Lot: 56 MEADOWSLEA M492

Birth Date: 18/09/16

ID No: 19134116492

TE MANIA 09 624
TANGIHAU KAINO H29

TE MANIA 05 010
TANGIHAU 10 - 85

MEADOWSLEA 70
MEADOWSLEA C879

MEADOWSLEA 975

BT RIGHT TIME 24J (IMP USA)
TE MANIA 05 010

WOODBANK 7147
TANGIHAU 673

TE WHANGA TRAILBLAZER T47
MEADOWSLEA 410

GLEN R ABSOLUTE
MEADOWSLEA 547

2019 AUSTRALASIAN GROUP BREEDPLAN EBVS

DIR	DTRS	GL	BW	200	400	600	MCW	Milk
-6.2	-3.4	-2.7	+7.3	+37	+66	+90	+96	+14
46%	35%	51%	75%	70%	69%	74%	68%	56%

SS	DTC	CW	EMA	Rib Fat	Rump	RBV (%)	IMF%
+1.5	-3.3	+35	+1.9	+2.2	+3.1	-1.3	+1.4
59%	40%	59%	58%	64%	62%	57%	56%

Comments: A Tangihau Kaino daughter with some length and capacity as well as a good coat. Dam is a great old cow and has produced 10 calves in 10 years. Scanned very well for marbling and has excellent fats. Mated to Rangatira 209 followed by Turiroa 14-830.

BREEDPLAN INDEXES

SR +\$70 **AP** +\$91

Purchaser:

PRICE: \$

Lot: 57 MEADOWSLEA M458

Birth Date: 12/09/16

ID No: 19134116458

TURIHAU CRUMP E5 (ET)
MEADOWSLEA J670

MEADOWSLEA E426

MEADOWSLEA G826
MEADOWSLEA J608

MEADOWSLEA B695

TURIHAU CRUMBLE Y167
TURIHAU Q263

PIKO BURN CHAR 26-06
MEADOWSLEA B716

VERMONT DRAMBUIE D057(AI)(ET) (IMP AUS)
MEADOWSLEA A476

PIKO BURN 31-03
MEADOWSLEA 68

2019 AUSTRALASIAN GROUP BREEDPLAN EBVS

DIR	DTRS	GL	BW	200	400	600	MCW	Milk
-4.9	-2.2	-3.7	+7.0	+40	+74	+108	+112	+13
37%	28%	45%	72%	65%	65%	71%	64%	44%

SS	DTC	CW	EMA	Rib Fat	Rump	RBV (%)	IMF%
+3.1	-3.1	+43	+4.7	+0.5	+0.5	+1.1	-0.1
51%	39%	54%	54%	61%	59%	54%	52%

Comments: A bigger-framed J670 daughter who has weaned a good calf. Real growth and performance here with her having the top 400 day weight of her group and 2nd best EMA. Tremendous scrotal EBV with good muscle and fats. A very good mate to G914, followed by K703.

BREEDPLAN INDEXES

SR +\$90 **AP** +\$118

Purchaser:

PRICE: \$

Lot: 58 MEADOWSLEA M1060

Birth Date: 01/10/16

ID No: 191341161060

WAITERENUI ALLIANCE F084
WAITERENUI ALLIANCE J144

WAITERENUI TULIP C113
TE MANIA UNLIMITED U3271 (IMP AUS)
WAITERENUI TULIP 813

MEADOWSLEA G842
MEADOWSLEA J472

MEADOWSLEA G1045

WAITERENUI ALLIANCE C85
WAITERENUI MERRY MAID D65

KAIWARA 440
MEADOWSLEA B553

KAHARAU 07-558
MEADOWSLEA B558

2019 AUSTRALASIAN GROUP BREEDPLAN EBVS

DIR	DTRS	GL	BW	200	400	600	MCW	Milk
-4.4	-3.9	-2.9	+6.3	+38	+71	+93	+82	+14
37%	26%	52%	72%	66%	67%	65%	61%	44%

SS	DTC	CW	EMA	Rib Fat	Rump	RBV (%)	IMF%
+0.9	-3.3	+42	+2.0	+0.9	+1.5	-1.0	+1.4
54%	35%	54%	56%	63%	60%	55%	54%

Comments: A quality Waiterenui daughter with good growth, muscle, and fats, she also scanned very well for marbling at 6.5 Sound with a good top on her. Mated to G914 followed by K703.

BREEDPLAN INDEXES

SR +\$85 **AP** +\$104

Purchaser:

PRICE: \$



RISING 3YR STUD HEIFERS

Lot: 59 MEADOWSLEA M456 Birth Date: 10/09/16 ID No: 19134116456

TE MANIA 09 624
 TANGIHAU KAINO H29
 TANGIHAU 10 - 85
 TE MANIA INFINITY 04 379
 MEADOWSLEA G843
 MEADOWSLEA 898
 BT RIGHT TIME 24J (IMP USA)
 TE MANIA 05 010
 WOODBANK 7147
 TANGIHAU 673
 TE MANIA UNLIMITED U3271 (IMP AUS)
 TE MANIA 95102
 MEADOWSLEA 608
 MEADOWSLEA 420

2019 AUSTRALASIAN GROUP BREEDPLAN EBVS

DIR	DTRS	GL	BW	200	400	600	MCW	Milk
-2.7	-3.3	-3.7	+4.0	+33	+61	+73	+71	+15
48%	39%	82%	75%	70%	69%	74%	68%	56%

SS	DTC	CW	EMA	Rib Fat	Rump	RBV (%)	IMF%
+1.5	-3.6	+33	+2.2	+1.9	+2.7	-1.8	+2.5
58%	41%	59%	58%	64%	63%	58%	57%

Comments: A different pedigree here; by Tangihau Kaino out of aTe Mania Infinity cow. She has very strong fats and scanned with the top marbling figure of 6.8. Dam G843 has been breeding well, including a keeper bull L153, while M456 herself just weaned a very good calf . Also very well mated to G914, followed by K703.

BREEDPLAN INDEXES			
SR	+\$83	AP	+\$95

Purchaser:

PRICE: \$

Lot: 60 MEADOWSLEA M1037 Birth Date: 21/09/16 ID No: 191341161037

WAITERENUI ALLIANCE F084
 WAITERENUI ALLIANCE J144
 WAITERENUI TULIP C113
 MEADOWSLEA C885
 MEADOWSLEA E456
 MEADOWSLEA B628
 WAITERENUI ALLIANCE C85
 WAITERENUI MERRY MAID D65
 TE MANIA UNLIMITED U3271 (IMP AUS)
 WAITERENUI TULIP 813
 FARFIELD AVORIO 316
 MEADOWSLEA 119
 MEADOWSLEA 36
 MEADOWSLEA 267

2019 AUSTRALASIAN GROUP BREEDPLAN EBVS

DIR	DTRS	GL	BW	200	400	600	MCW	Milk
-0.7	-2.9	-3.2	+5.5	+35	+66	+92	+87	+15
40%	28%	50%	73%	67%	68%	66%	62%	49%

SS	DTC	CW	EMA	Rib Fat	Rump	RBV (%)	IMF%
+0.9	-2.3	+37	+2.5	+0.5	+0.4	+0.2	+0.0
57%	38%	56%	56%	63%	61%	56%	55%

Comments: A Waiterenui daughter here with plenty of growth, a good topline, frame, and bone. Dam E0456 is a great old cow in this sale (lot 89) and has bred a stud bull J500. Mated to the top yearling N141 followed by his sire Turiroa 14-830.

BREEDPLAN INDEXES			
SR	+\$84	AP	+\$103

Purchaser:

PRICE: \$





LEADING WITH TRADITIONAL VALUES

FOR EXPERT KNOWLEDGE, KNOW HOW AND CAN DO
CONTACT YOUR LOCAL LIVESTOCK BROKER:

GET IN TOUCH:

South Canterbury

Central Regional Livestock Manager:
Lindsay Holland • 027 254 6841

Jesse Dargue (General Manager)

• 021 969 844

Peter Walsh (Business Support Director)

• 027 561 4087

Stuart Blake (Business Support)

• 027 433 9088

Wayne Andrews • 027 484 8232

Craig (Snow) Buckley • 027 561 4652

Andrew Scott • 022 184 3204

Alex Borlase • 027 687 6695

Curly McRae • 027 889 7771

Dean Cox (Dairy) • 027 561 5007

Don Borlase (Dairy) • 027 561 4025

Max Bensemann (Deer) • 027 561 0000

Cannan Elvines (trainee) • 027 497 7275

Mackenzie/Fairlie

Hamish Zuppich • 027 403 3025

Greg Shearer • 027 476 6769

North Otago

Di Medlicott • 027 208 2932

Madison Taylor • 021 656 851

Chatham Islands

Martie Gregory-Hunt • 03 305 0458

Tasman / West Coast / Marlborough

Ben Greenslade • 021 656 813

Mid / North Canterbury

Alby Orchard • 027 534 5753

John Harrison • 027 435 6243

Gary Batchelor • 027 489 3265

Mark Woods • 027 656 0835

Martin Cuttle • 027 434 7342

Angus Ayres • 027 801 2106

Dave Langley • 027 432 8324

Otago

Kevin White • 021 656 871

Spike Kendall • 021 656 290

Southland

Southland Regional Livestock Manager:

Jack Meehan • 027 432 4284

Austin Smith • 027 208 4053

Ross McKerchar • 027 491 7070

Anton Nally • 022 377 6732

Murray Mitchell • 027 434 5055

PWA Finance

Karen Walsh • 027 820 1442

Rob Jeffrey • 027 801 0167

www.peterwalsh.co.nz

P: 03 687 4440 F: 03 687 4048 • office@peterwalsh.co.nz



Lot: 61 MEADOWSLEA L127

Birth Date: 14/09/15

ID No: 19134115127

MEADOWSLEA D227
MEADOWSLEA F540
 MEADOWSLEA D042
 TURIHAUA CRUMP E5 (ET)
MEADOWSLEA H328
 MEADOWSLEA D082

MEADOWSLEA 70
 MEADOWSLEA 143
 FLORIDALE YELET
 MEADOWSLEA A300
 TURIHAUA CRUMBLE Y167
 TURIHAUA Q263
 TE MANIA 05 461
 MEADOWSLEA 35

2019 AUSTRALASIAN GROUP BREEDPLAN EBVS

DIR	DTRS	GL	BW	200	400	600	MCW	Milk
+2.8	+0.4	-6.2	+2.8	+31	+66	+87	+91	+22
48%	38%	56%	74%	69%	70%	68%	66%	59%

SS	DTC	CW	EMA	Rib Fat	Rump	RBV (%)	IMF%
+1.8	-5.9	+36	+3.4	+1.2	+1.3	-0.7	+0.8
60%	52%	60%	61%	66%	64%	61%	60%

Comments: First up in this age-group we have a classic F540 daughter bred out of a Crump cow - always such a great cross! This young cow is deep-bodied and easy-doing with great fertility and maternal traits, all in the top 20% for the Angus breed. She also scanned well for muscle, fats, and marbling. Mated to K703 followed by 2 of his sons.

BREEDPLAN INDEXES

SR +\$106 **AP** +\$125

Purchaser:

PRICE: \$

Lot: 62 MEADOWSLEA L133

Birth Date: 14/09/15

ID No: 19134115133

MEADOWSLEA D227
MEADOWSLEA F540
 MEADOWSLEA D042
 STERN 0713
MEADOWSLEA F748
 MEADOWSLEA 160

MEADOWSLEA 70
 MEADOWSLEA 143
 FLORIDALE YELET
 MEADOWSLEA A300
 HIGHLANDER OF STERN
 STERN 5183
 TE WHANGA TRAILBLAZER T47
 MEADOWSLEA 982

2019 AUSTRALASIAN GROUP BREEDPLAN EBVS

DIR	DTRS	GL	BW	200	400	600	MCW	Milk
+2.2	-2.5	-4.7	+4.6	+33	+68	+89	+98	+23
51%	39%	57%	76%	72%	72%	72%	77%	62%

SS	DTC	CW	EMA	Rib Fat	Rump	RBV (%)	IMF%
+2.7	-6.7	+41	+3.2	+1.9	+2.2	-0.6	+1.7
65%	55%	63%	63%	68%	66%	62%	61%

Comments: Another classic F540 daughter very similar to the last, again with a great set of data. Top 10% of breed for the important fertility traits - milk, DTC, Scrotal and Rib and Rump fat. Out of a very good cow breeding a stud bull to Glanworth \$11000. Mated to Turihaua Crump followed by his son K811, which should be a great cross.

BREEDPLAN INDEXES

SR +\$110 **AP** +\$134

Purchaser:

PRICE: \$

Lot: 63 MEADOWSLEA L310

Birth Date: 08/10/15

ID No: 19134115310

TE MANIA INFINITY 04 379
GOLDWYN 017
 GOLDWYN 05-595
 GLANWORTH WAIGROUP 0816
MEADOWSLEA G1004
 MEADOWSLEA D082

TE MANIA UNLIMITED U3271 (IMP AUS)
 TE MANIA 95102
 TE MANIA ULONG U41 (IMP AUS)
 GOLDWYN 617
 SHALOM WAIGROUP 101/01
 GLANWORTH WAIGROUP 226 (ET)
 TE MANIA 05 461
 MEADOWSLEA 35

2019 AUSTRALASIAN GROUP BREEDPLAN EBVS

DIR	DTRS	GL	BW	200	400	600	MCW	Milk
-0.4	-1.4	-4.8	+2.8	+31	+60	+77	+63	+11
49%	40%	56%	76%	70%	71%	71%	76%	61%

SS	DTC	CW	EMA	Rib Fat	Rump	RBV (%)	IMF%
+2.6	-6.6	+32	+0.6	+1.4	+2.0	-1.1	+1.6
62%	54%	61%	61%	67%	65%	60%	60%

Comments: A Goldwyn 17 daughter out of a good Glanworth 16 cow who has bred a top sale bull to sold to Robin Jameson. Strong fertility traits here again with days to calving, scrotal size and fats all in the 10% of the breed. A lovely easy-doing, moderate-framed young cow. Mated to Turihaua Crump followed by his son K811.

BREEDPLAN INDEXES

SR +\$100 **AP** +\$116

Purchaser:

PRICE: \$



Lot: 64 MEADOWSLEA L051

Birth Date: 15/09/15

ID No: 19134115051

TE MANIA INFINITY 04 379
GOLDWYN 017
 GOLDWYN 05-595
 MEADOWSLEA 914
MEADOWSLEA 1129
 MEADOWSLEA 985

TE MANIA UNLIMITED U3271 (IMP AUS)
 TE MANIA 95102
 TE MANIA ULONG U41 (IMP AUS)
 GOLDWYN 617
 RANUI W RADIATA 820
 MEADOWSLEA 331
 GLEN R ABSOLUTE
 MEADOWSLEA 638

2019 AUSTRALASIAN GROUP BREEDPLAN EBVS

DIR	DTRS	GL	BW	200	400	600	MCW	Milk
-3.2	-4.6	-4.1	+5.3	+32	+62	+88	+93	+12
49%	42%	54%	75%	70%	70%	69%	67%	62%

SS	DTC	CW	EMA	Rib Fat	Rump	RBV (%)	IMF%
+1.5	-4.6	+34	+0.7	+0.1	+1.0	-0.5	+1.0
61%	52%	60%	59%	65%	63%	59%	58%

Comments: Another nice Goldwyn 17 daughter. Smooth, very easy-doing, nicely balanced. Out of a great old cow who gave us 13 calves in 13 years including \$25,000 worth of sale bulls. Grandam had equally good longevity - 15 calves in 15 years! Mated to F540 followed by his sons N270 and N214.

BREEDPLAN INDEXES

SR +\$75 **AP** +\$101

Purchaser:

PRICE: \$

Lot: 65 MEADOWSLEA L081

Birth Date: 06/10/15

ID No: 19134115081

MEADOWSLEA F540
MEADOWSLEA J514
 MEADOWSLEA B690
 MEADOWSLEA 104
MEADOWSLEA B570
 MEADOWSLEA 292

MEADOWSLEA D227
 MEADOWSLEA D042
 FARFIELD AVORIO 316
 MEADOWSLEA 183
 WOODBANK PP85
 MEADOWSLEA 601
 STERN 68
 MEADOWSLEA 9

2019 AUSTRALASIAN GROUP BREEDPLAN EBVS

DIR	DTRS	GL	BW	200	400	600	MCW	Milk
+1.4	-0.7	-3.9	+5.1	+40	+76	+99	+95	+11
43%	31%	44%	74%	68%	69%	67%	64%	53%

SS	DTC	CW	EMA	Rib Fat	Rump	RBV (%)	IMF%
+1.6	-3.9	+45	+3.1	+0.6	+1.1	-0.2	+0.4
58%	43%	57%	56%	62%	60%	56%	55%

Comments: A well-balanced daughter of J514 - the F540 son who was sold to Earnsclough Station at \$17000, where he has done very well. L081 has calving ease with strong growth, good muscle and fats. Mated to Crump sons: N166 followed by K811.

BREEDPLAN INDEXES

SR +\$115 **AP** +\$131

Purchaser:

PRICE: \$

Lot: 66 MEADOWSLEA L101

Birth Date: 28/08/15

ID No: 19134115101

GOLDWYN 017
MEADOWSLEA J432
 MEADOWSLEA G1004
 KAHARAU 07-558
MEADOWSLEA J678
 MEADOWSLEA 179

TE MANIA INFINITY 04 379
 GOLDWYN 05-595
 GLANWORTH WAIGROUP 0816
 MEADOWSLEA D082
 RANGATIRA GERONIMO 843
 KAHARAU 5824
 KOROMIKO INTENT U3
 MEADOWSLEA 626

2019 AUSTRALASIAN GROUP BREEDPLAN EBVS

DIR	DTRS	GL	BW	200	400	600	MCW	Milk
+1.9	-0.2	-4.3	+2.0	+29	+60	+74	+63	+14
39%	30%	48%	71%	65%	66%	64%	61%	53%

SS	DTC	CW	EMA	Rib Fat	Rump	RBV (%)	IMF%
+1.8	-5.0	+32	+3.0	+1.3	+1.4	-0.6	+1.2
57%	45%	54%	55%	61%	59%	54%	53%

Comments: This granddaughter of Goldwyn 17 is breeding well. This year she weaned the second-heaviest calf for her year-group. A very productive feminine type with good maternal traits, her figures show calving ease, low birth weight and fats in the top 10% for the breed. Mated to K703 followed up by a couple of his yearling sons.

BREEDPLAN INDEXES

SR +\$104 **AP** +\$116

Purchaser:

PRICE: \$



RISING 4YR YOUNG STUD COWS

Lot: 67
MEADOWSLEA L235

Birth Date: 27/09/15
ID No: 19134115235

GLANWORTH WAIGROUP

0816

MEADOWSLEA J500

MEADOWSLEA E456

SHALOM WAIGROUP 101/01

GLANWORTH WAIGROUP 226 (ET)

MEADOWSLEA C885

MEADOWSLEA B628

TURIHAUA CRUMP E5 (ET)

MEADOWSLEA H283

MEADOWSLEA E274

TURIHAUA CRUMBLE Y167

TURIHAUA Q263

MEADOWSLEA C875

MEADOWSLEA C845

Comments: By the yearling J500 who was sold to Hecklers for \$9,000, and out of a Crump cow who has produced 2 good sale bulls. L235 is a good moderate-framed cow with good fertility - she has days to calving and rib and rump fats in the top 5% for the breed. Mated to K703, followed by 2 K703 yearlings.

2019 AUSTRALASIAN GROUP BREEDPLAN EBVS								
DIR	DTRS	GL	BW	200	400	600	MCW	Milk
-0.9	+0.0	-3.7	+4.6	+34	+65	+87	+91	+9
40%	30%	47%	72%	65%	67%	65%	62%	49%

SS	DTC	CW	EMA	Rib Fat	Rump	RBY (%)	IMF%
+1.6	-7.2	+36	+1.5	+2.8	+3.0	-1.2	+0.3
55%	42%	55%	56%	62%	60%	55%	54%

BREEDPLAN INDEXES

SR	+\$100	AP	+\$114
----	--------	----	--------

Purchaser:

PRICE: \$

Lot: 68
MEADOWSLEA L142

Birth Date: 16/09/15
ID No: 19134115142

GLANWORTH WAIGROUP

0816

MEADOWSLEA J500

MEADOWSLEA E456

SHALOM WAIGROUP 101/01

GLANWORTH WAIGROUP 226 (ET)

MEADOWSLEA C885

MEADOWSLEA B628

KAHARAU 07-558

MEADOWSLEA F731

MEADOWSLEA 95

RANGATIRA GERONIMO 843

KAHARAU 5824

KOROMIKO INTENT U3

MEADOWSLEA 626

Comments: Another bigger-framed daughter of the J500 bull we used as a yearling. L142 has scale and width, and scanned with good muscle, marbling, and strong fats. Mated to Ratanui Nugget, N119 and then followed up by Goldwyn 17.

2019 AUSTRALASIAN GROUP BREEDPLAN EBVS								
DIR	DTRS	GL	BW	200	400	600	MCW	Milk
-0.5	-0.4	-2.2	+4.0	+34	+63	+83	+83	+9
42%	31%	44%	73%	67%	68%	67%	64%	51%

SS	DTC	CW	EMA	Rib Fat	Rump	RBY (%)	IMF%
+1.1	-4.2	+38	+4.2	+0.9	+0.7	+0.3	-0.1
53%	48%	56%	55%	63%	61%	55%	54%

BREEDPLAN INDEXES

SR	+\$96	AP	+\$106
----	-------	----	--------

Purchaser:

PRICE: \$



RISING 4YR YOUNG STUD COWS

Lot: 69 MEADOWSLEA L360

Birth Date: 27/10/15

ID No: 19134115360

TURIHAUA CRUMP E5 (ET)

TURHAUA CRUMBLE Y167
TURHAUA Q263

MEADOWSLEA J558

L MEADOWSLEA D062

FLORIDALE YELET
MEADOWSLEA A418

MEADOWSLEA 159

TE MANIA UNLIMITED U3271 (IMP AUS)
MEADOWSLEA 410

MEADOWSLEA C914

L MEADOWSLEA 185

[KOROMIKO INTENT U3
MEADOWSLEA 902

2019 AUSTRALASIAN GROUP BREEDPLAN EBVS

DIR	DTRS	GL	BW	200	400	600	MCW	Milk
-8.5	-5.1	-1.9	+7.5	+39	+74	+100	+113	+14
45%	35%	51%	73%	67%	67%	66%	64%	54%

SS	DTC	CW	EMA	Rib Fat	Rump	RBV (%)	IMF%
+2.6	-7.4	+40	+2.9	+1.7	+2.0	+0.1	+0.0
56%	49%	57%	55%	61%	59%	55%	54%

Comments: A Crump granddaughter here out of the great old cow C914, who bred 3 top sale bulls, as well as H202 who we kept in 2014, and N270 who was used this year to follow-up F540 himself. L360 has tremendous scrotal, DTC and fat figures indicating strong fertility traits. Mated to K703 followed by 2 of his yearling sons.

BREEDPLAN INDEXES

SR	+\$82	AP	+\$96
-----------	-------	-----------	-------

Purchaser:

PRICE: \$

Lot: 70 MEADOWSLEA L212

Birth Date: 23/09/15

ID No: 19134115212

└ TURIHAUA CRUMP E5 (ET)

TURHAUA CRUMBLE Y167
TURHAUA Q263

MEADOWSLEA H202

L MEADOWSLEA C914

[MEADOWSLEA 159
[MEADOWSLEA 185

MEADOWSLEA E288

- [MEADOWSLEA C844
- [MEADOWSLEA C810

MEADOWSLEA G812

MEADOWSLEA E420

FLORIDALE YELET
MEADOWSLEA B652

2019 AUSTRALASIAN GROUP BREEDPLAN EBVS

DIR	DTRS	GL	BW	200	400	600	MCW	Milk
-3.1	-1.9	-2.6	+5.4	+35	+70	+94	+91	+13
41%	31%	50%	73%	67%	68%	66%	63%	54%

SS	DTC	CW	EMA	Rib Fat	Rump	RBV (%)	IMF%
+2.6	-5.1	+36	+1.6	+1.6	+1.6	-0.2	+0.3
55%	46%	56%	57%	64%	62%	57%	55%

Comments: Another Crump granddaughter with plenty of frame and a lovely top on her. Very strong growth with good scrotal and fats. Just weaned a very good calf this year. Mated to F540 followed by N214 and N270.

BREEDPLAN INDEXES

SR	+\$94	AP	+\$111
-----------	-------	-----------	--------

Purchaser:

PRICE: \$





Proven performance.

Error free, convenient
DNA sampling with Allflex TSU
(tissue sampling unit).



Allflex[®]

Livestock Intelligence

Mark McManaway 0275 176 693 (North)
Steve Kelly 0275 602 699 (South)
John Rutherford 0274 465 508 (National)

www.allflex.co.nz

SNP
Sire  **RACE**[®]

- Accurate Pedigree
- Multi Sire Mating
- Flexible Mating Management



Sire Verification

TAT subject to season

Zoetis New Zealand Limited

PO Box 5520, Moray Place, Dunedin 9058, New Zealand

T 0800 228 278

T 03 477 5920

F 03 477 5930

E genetics.nz@zoetis.com

W www.zoetis.co.nz/genetics

zoetis



MEADOWSLEA
ANGUS & SHEEP GENETICS

Lot: 71 MEADOWSLEA L224

Birth Date: 26/09/15

ID No: 19134115224

└ MEADOWSLEA F540	└ MEADOWSLEA D227
MEADOWSLEA J514	└ MEADOWSLEA D042
└ MEADOWSLEA B690	└ FARFIELD AVORIO 316
	└ MEADOWSLEA 183
└ MEADOWSLEA D096	└ TE MANIA 05 461
MEADOWSLEA F677	└ MEADOWSLEA 218
└ MEADOWSLEA D038	└ FARFIELD AVORIO 316
	└ MEADOWSLEA 188

2019 AUSTRALASIAN GROUP BREEDPLAN EBVS

DIR	DTRS	GL	BW	200	400	600	MCW	Milk
+2.6	-2.0	-4.0	+3.6	+34	+67	+74	+64	+14
43%	30%	42%	75%	69%	70%	68%	65%	57%

SS	DTC	CW	EMA	Rib Fat	Rump	RBV (%)	IMF%
+2.5	-8.7	+35	+2.8	+2.3	+3.5	-1.5	+1.3
56%	48%	58%	58%	66%	63%	58%	58%

Comments: A daughter of J514 who was sold to Earnsclegh Station at \$17,000. Her dam is breeding well with a top son amongst this year's sale bulls. L224 has length and scale with a very good coat. She scanned well with very good fats and marbling. Great figures in the important fertility traits - calving ease, scrotal size, DTC and fats all at the top of the breed. Mated to K703 followed by his 2 yearling sons.

BREEDPLAN INDEXES

SR	AP
+\$123	+\$121

Purchaser:

PRICE: \$

Lot: 72 MEADOWSLEA L107

Birth Date: 04/09/15

ID No: 19134115107

└ TURIHAUA CRUMP E5 (ET)	└ TURIHAUA CRUMBLE Y167
MEADOWSLEA H202	└ TURIHAUA Q263
└ MEADOWSLEA C914	└ MEADOWSLEA 159
	└ MEADOWSLEA 185
└ KAHARAU 07-558	└ RANGATIRA GERONIMO 843
MEADOWSLEA H211	└ KAHARAU 5824
└ MEADOWSLEA 220	└ STERN 68
	└ MEADOWSLEA 157

2019 AUSTRALASIAN GROUP BREEDPLAN EBVS

DIR	DTRS	GL	BW	200	400	600	MCW	Milk
-3.8	-3.4	-2.8	+6.1	+37	+70	+101	+107	+12
41%	32%	50%	72%	66%	67%	66%	63%	51%

SS	DTC	CW	EMA	Rib Fat	Rump	RBV (%)	IMF%
+1.5	-5.1	+39	+2.2	+1.3	+1.2	-0.3	-0.4
55%	48%	55%	56%	62%	60%	55%	54%

Comments: Another Crump granddaughter with very strong growth, giving her the third heaviest 400-day in her group. She has frame, stretch and capacity with great width on top. She scanned with good muscle and fats and has just weaned a good calf this year. Mated to K703 followed by 2 yearling sons.

BREEDPLAN INDEXES

SR	AP
+\$81	+\$103

Purchaser:

PRICE: \$

Lot: 73 MEADOWSLEA L152

Birth Date: 17/09/15

ID No: 19134115152

└ MEADOWSLEA D227	└ MEADOWSLEA 70
MEADOWSLEA F540	└ MEADOWSLEA 143
└ MEADOWSLEA D042	└ FLORIDALE YELET
	└ MEADOWSLEA A300
└ TURIHAUA CRUMP E5 (ET)	└ TURIHAUA CRUMBLE Y167
MEADOWSLEA H234	└ TURIHAUA Q263
└ MEADOWSLEA D188	└ ACHIEVER A320 OF KENHARDT
	└ MEADOWSLEA 601

2019 AUSTRALASIAN GROUP BREEDPLAN EBVS

DIR	DTRS	GL	BW	200	400	600	MCW	Milk
+2.7	+0.5	-5.3	+2.0	+32	+68	+83	+62	+25
50%	39%	57%	76%	70%	70%	74%	76%	61%

SS	DTC	CW	EMA	Rib Fat	Rump	RBV (%)	IMF%
+2.1	-7.2	+34	+2.4	+3.3	+3.4	-1.6	+0.7
61%	55%	62%	61%	67%	65%	61%	60%

Comments: A very productive daughter of F540 out of a Crump cow - the top pedigree at Meadowslea. Scanned very well being 2nd-top for EMA, rib fat and marbling. Exceptional numbers for all the maternal and fertility traits. Impressive weaning weights of her calves have given her this great milk figure, Mated to Rangatira 209 followed by Turoa 14-830.

BREEDPLAN INDEXES

SR	AP
+\$117	+\$121

Purchaser:

PRICE: \$



Downlands Deer

& STUDSTOCK

DEDICATED TO WORKING AS A TEAM



CONTACT: KRIS ORANGE
TELEPHONE 03 693 8013
MOBILE 021 322 622

NZ Stud Stock Specialists



MEADOWSLEA
ANGUS & SHEEP GENETICS

Lot: 74 MEADOWSLEA L132

Birth Date: 14/09/15

ID No: 19134115132

SCHURRTOP REALITY X723 [SCHURR 77 1346 EXCEL
 SCHURRTOP 8019 V141
MATAURI REALITY 839
 MATAURI 06663 [TE MANIA ULONG U41 (IMP AUS)
 MATAURI 04456 AB
 FLORIDALE YELET [ELLERTON LASER 011245
 FLORIDALE UMOYA
MEADOWSLEA D248
 MEADOWSLEA 185 [KOROMIKO INTENT U3
 MEADOWSLEA 902

2019 AUSTRALASIAN GROUP BREEDPLAN EBVS

DIR	DTRS	GL	BW	200	400	600	MCW	Milk
+3.6	+3.7	-6.6	+3.5	+36	+67	+87	+98	+10
57%	52%	83%	76%	72%	72%	73%	77%	65%

SS	DTC	CW	EMA	Rib Fat	Rump	RBY (%)	IMF%
+2.1	-3.7	+41	+4.0	+2.1	+1.5	-0.5	+1.4
63%	55%	65%	63%	69%	67%	64%	63%

Comments: A daughter of Matauri Reality and out of a great old cow D0248. L132 is bigger-framed with length and has great carcass data - she scanned 3rd best for EMA and fats, and 4th best for marbling in her group. Her EBVs show exceptional calving ease and rib and rump fat in the top 10% for the breed. She weaned a good calf this year. Mated to M452 - son of the \$100,000 Rangatira 13-38 bull, followed by L226.

BREEDPLAN INDEXES

SR	AP
+\$118	+\$141

Purchaser:

PRICE: \$

Lot: 75 MEADOWSLEA L276

Birth Date: 03/10/15

ID No: 19134115276

MEADOWSLEA F540 [MEADOWSLEA D227
 MEADOWSLEA D042
MEADOWSLEA J514
 MEADOWSLEA B690 [FARFIELD AVORIO 316
 MEADOWSLEA 183
 MEADOWSLEA 159 [TE MANIA UNLIMITED U3271 (IMP AUS)
 MEADOWSLEA 410
MEADOWSLEA D056
 MEADOWSLEA 1114 [GLEN R ABSOLUTE
 MEADOWSLEA 626

2019 AUSTRALASIAN GROUP BREEDPLAN EBVS

DIR	DTRS	GL	BW	200	400	600	MCW	Milk
+2.7	-1.7	-3.9	+2.7	+32	+64	+74	+67	+19
45%	34%	46%	75%	70%	71%	71%	75%	58%

SS	DTC	CW	EMA	Rib Fat	Rump	RBY (%)	IMF%
+2.9	-7.7	+29	+2.6	+2.6	+3.8	-1.6	+1.8
59%	50%	60%	60%	66%	64%	60%	59%

Comments: Another daughter of J514 who was sold to Earnsclough Station at \$17,000. Her mother was the great old cow D0056 who bred very well and was sold to Linnburn Station at top price of \$5000 in our first female sale. Exceptional numbers for all the fertility traits with great calving ease, low birthweight, strong milk, scrotal, and DTC. She scanned with very good fats and marbling. Mated to M452, the Rangatira 13-38 son who we sold to Peak Hill at \$17,000 and retained a share in, followed by L226.

BREEDPLAN INDEXES

SR	AP
+\$116	+\$121

Purchaser:

PRICE: \$

Lot: 76 MEADOWSLEA L216

Birth Date: 25/09/15

ID No: 19134115216

MEADOWSLEA F540 [MEADOWSLEA D227
 MEADOWSLEA D042
MEADOWSLEA J514
 MEADOWSLEA B690 [FARFIELD AVORIO 316
 MEADOWSLEA 183
 STERN 0713 [HIGHLANDER OF STERN
 STERN 5183
MEADOWSLEA F549
 MEADOWSLEA D238 [FLORIDALE YELET
 MEADOWSLEA 20

2019 AUSTRALASIAN GROUP BREEDPLAN EBVS

DIR	DTRS	GL	BW	200	400	600	MCW	Milk
+0.6	-3.6	-3.2	+4.6	+40	+73	+92	+75	+23
45%	33%	48%	76%	70%	71%	71%	75%	57%

SS	DTC	CW	EMA	Rib Fat	Rump	RBY (%)	IMF%
+2.5	-6.6	+39	+4.6	+2.6	+3.7	-0.8	+0.6
60%	48%	59%	59%	65%	63%	58%	58%

Comments: Another similar daughter of J514. Dam is a top cow in our AI programme who has bred a series of heifers we have retained. Great maternal traits with milk, DTC, scrotal size and fats in the top 10% for the breed. Mated to Rangatira 209 followed by Turiroa 14-830.

BREEDPLAN INDEXES

SR	AP
+\$118	+\$121

Purchaser:

PRICE: \$



ANNUAL DRAFT STUD COWS

Lot: 77 MEADOWSLEA E350

Birth Date: 24/09/09

ID No: 19134109350

MEADOWSLEA A325	WOODBANK BLACKPOWER 06
MEADOWSLEA C847	MEADOWSLEA 1
MEADOWSLEA A424	MEADOWSLEA 149
	MEADOWSLEA 232
MEADOWSLEA 159	TE MANIA UNLIMITED U3271 (IMP AUS)
MEADOWSLEA C914	MEADOWSLEA 410
MEADOWSLEA 185	KOROMIKO INTENT U3
	MEADOWSLEA 902

2019 AUSTRALASIAN GROUP BREEDPLAN EBVS

DIR	DTRS	GL	BW	200	400	600	MCW	Milk
+0.1	-1.6	-2.1	+5.1	+34	+59	+80	+95	+9
53%	39%	63%	82%	76%	77%	80%	80%	76%

SS	DTC	CW	EMA	Rib Fat	Rump	RBV (%)	IMF%
+1.6	-4.3	+31	+5.0	+0.2	+0.6	+0.9	-0.1
71%	56%	66%	64%	70%	68%	63%	61%

Comments: A top breeding cow here to lead off the annual draft offering. E0350 is the mother of one of this year's standout sale bulls N119, who we used as a yearling over stud cows. She has also bred a top son sold to Glenquoich Station at \$9000 and another at \$6200, and has had 3 top daughters retained. Her Dam C914 is one of the greatest cows we have bred and the mother of N270 - the top F540 yearling bull used over stud cows this year, and H202 - a stud sire retained. Terrific figures for an old cow with a very good EMA. This is a very good breeding family and we expect an exceptional calf from the AI mate to Taimate Lazarus. AI was followed up by Turihaua Loyalty.

BREEDPLAN INDEXES

SR	+\$91	AP	+\$104
----	-------	----	--------

Purchaser:

PRICE: \$

Lot: 78 MEADOWSLEA E420

Birth Date: 08/10/09

ID No: 19134109420

ELLERTON LASER 011245	BON VIEW NEW DESIGN 1407 (IMP USA)
FLORIDALE YELET	ELLERTON 98147
FLORIDALE UMOYA	OHOKU OF FLORIDALE
	MOYA OF FLORIDALE
MEADOWSLEA 36	TOTARANUI STEPTOE 3.40
MEADOWSLEA B652	MEADOWSLEA 405
MEADOWSLEA 195	KOROMIKO INTENT U3
	MEADOWSLEA 447

2019 AUSTRALASIAN GROUP BREEDPLAN EBVS

DIR	DTRS	GL	BW	200	400	600	MCW	Milk
-0.2	-0.6	-2.3	+3.6	+28	+54	+77	+79	+17
54%	42%	53%	82%	77%	78%	80%	80%	77%

SS	DTC	CW	EMA	Rib Fat	Rump	RBV (%)	IMF%
+2.8	-7.0	+29	+1.2	+0.7	+0.8	+0.6	+0.0
73%	60%	67%	65%	69%	68%	63%	61%

Comments: A top-breeding Yelet cow who had a son sold at \$14,000 to Mt Gerald Station, and others to Mt View, Grampians Station, and a yearling stud bull to Linton Palmer. These Yelet cows have been outstanding breeders in the herd (Meadowslea F540 is out of a Yelet Cow). A lovely medium-framed, compact cow. Great fertility figures once again with milk, scrotal, DTC and fats all very strong. Mated to Turihaua Crump himself, followed by his son K811.

BREEDPLAN INDEXES

SR	+\$88	AP	+\$104
----	-------	----	--------

Purchaser:

PRICE: \$

Lot: 79 MEADOWSLEA E391

Birth Date: 02/10/09

ID No: 19134109391

TE WHANGA TRAILBLAZER T47	FOSSIL CREEK SHADOW
MEADOWSLEA 70	TE WHANGA ER K132
MEADOWSLEA 410	BRACKENFIELD PRINCE ABEL
	MEADOWSLEA 117
FARFIELD AVORIO 316	TE MANIA XCELL 96263
MEADOWSLEA B690	UNITY 850 OF GLENMARK
MEADOWSLEA 183	TE WHANGA TRAILBLAZER T47
	MEADOWSLEA 458

2019 AUSTRALASIAN GROUP BREEDPLAN EBVS

DIR	DTRS	GL	BW	200	400	600	MCW	Milk
+1.9	-5.9	-3.3	+5.6	+35	+67	+86	+94	+22
60%	47%	51%	83%	79%	80%	82%	81%	75%

SS	DTC	CW	EMA	Rib Fat	Rump	RBV (%)	IMF%
+2.4	-3.8	+36	+1.2	+1.4	+2.7	-0.9	+1.0
71%	62%	70%	68%	72%	71%	66%	66%

Comments: A top old cow here breeding very well, including a stud bull sold to Puke-Nui Angus and other sons to Mt View at \$8,500 and Glen Islay at \$9,000. By the great old Meadowslea 70 sire, she has calving ease with milk, scrotal size and fats all at the top end of the breed. She has weaned a series of terrific calves - which is reflected in her outstanding milk EBV of +22. An exciting mate here to F540 bloodlines - our top keeper bull last year Meadowslea M564, followed up by L226.

BREEDPLAN INDEXES

SR	+\$88	AP	+\$102
----	-------	----	--------

Purchaser:

PRICE: \$



ANNUAL DRAFT STUD COWS

Lot: 80 MEADOWSLEA E495

Birth Date: 30/10/09

ID No: 19134109495

└ ELLERTON LASER 011245 └ BON VIEW NEW DESIGN 1407 (IMP USA)
ELLERTON 98147
FLORIDALE YELET
└ FLORIDALE UMOYA └ OHOKU OF FLORIDALE
MOYA OF FLORIDALE
└ MEADOWSLEA 1 └ KAHARAU PINE DRIVE BMW 106
MEADOWSLEA 61 └ PARAKOWHAI 593
└ MEADOWSLEA 529 └ BRACKENFIELD PRINCE ABEL
TOTARA HILLS 351

2019 AUSTRALASIAN GROUP BREEDPLAN EBVS

DIR	DTRS	GL	BW	200	400	600	MCW	Milk
-3.0	-3.1	-1.1	+7.0	+30	+53	+78	+93	+9
52%	40%	50%	80%	76%	76%	79%	78%	75%

SS	DTC	CW	EMA	Rib Fat	Rump	RBV (%)	IMF%
+0.4	-4.9	+29	+1.1	+0.1	+0.4	+0.4	-0.1
73%	57%	65%	63%	67%	67%	61%	59%

Comments: Another of these good old Yelet cows that have bred so well for us (F540 is out of a Yelet Cow). 5 good sale bulls including a top son to Guide Hill Station. Mated to the top yearling N119 then Ratanui Nugget, followed by Goldwyn 17.

BREEDPLAN INDEXES

SR	+\$63	AP	+\$84
-----------	--------------	-----------	--------------

Purchaser:

PRICE: \$

Lot: 81 MEADOWSLEA D101

Birth Date: 20/09/08

ID No: 19134108101

└ FARFIELD AVORIO 316 └ TE MANIA XCELL 96263
MEADOWSLEA B627 └ UNITY 850 OF GLENMARK
└ MEADOWSLEA 101 └ MERCHISTON PLAYMATE 733 AB
439 OF LAIRDVALE
└ MEADOWSLEA 159 └ TE MANIA UNLIMITED U3271 (IMP AUS)
MEADOWSLEA B716 └ MEADOWSLEA 410
└ MEADOWSLEA 72 └ TOTARANUI STEPTOE 3.40
MEADOWSLEA 626

2019 AUSTRALASIAN GROUP BREEDPLAN EBVS

DIR	DTRS	GL	BW	200	400	600	MCW	Milk
+3.1	-2.5	-2.1	+4.5	+35	+66	+89	+83	+12
58%	44%	58%	83%	78%	78%	81%	81%	77%

SS	DTC	CW	EMA	Rib Fat	Rump	RBV (%)	IMF%
+1.7	-3.1	+34	+2.6	+1.6	+2.0	-0.1	-0.3
68%	63%	68%	67%	72%	70%	65%	66%

Comments: A very special cow here - the dam of one of our current leading herd sires G914 (the Meat Machine). She has also bred a top sale bull sold to Palmside Station at \$8,000 and had 5 daughters retained in the Meadowslea herd. Great numbers for an old cow with calving ease, rib fat, and rump fat all in the top 10% for the breed. A great maternal type of cow whose son is having a huge influence in the stud. A real stud prospect here being mated to F540 followed by his two top sons - the numbers will be outstanding!

BREEDPLAN INDEXES

SR	+\$100	AP	+\$112
-----------	---------------	-----------	---------------

Purchaser:

PRICE: \$



ANNUAL DRAFT STUD COWS

Lot: 82 MEADOWSLEA E310

Birth Date: 18/09/09

ID No: 19134109310

MEADOWSLEA A325
MEADOWSLEA C847
MEADOWSLEA A424

WOODBANK BLACKPOWER 06
MEADOWSLEA 1

MEADOWSLEA 149
MEADOWSLEA 232

MEADOWSLEA A350
MEADOWSLEA C807
MEADOWSLEA A365

TE MANIA UNLIMITED U3271 (IMP AUS)
MEADOWSLEA 721

MEADOWSLEA 116
MEADOWSLEA 147

2019 AUSTRALASIAN GROUP BREEDPLAN EBVS

DIR	DTRS	GL	BW	200	400	600	MCW	Milk
+5.5	+3.5	-3.7	-0.6	+20	+48	+45	+16	+13
48%	34%	43%	80%	74%	75%	78%	77%	70%

SS	DTC	CW	EMA	Rib Fat	Rump	RBV (%)	IMF%
+0.0	+0.3	+19	+7.7	-0.7	-0.5	+0.8	+1.4
69%	53%	62%	62%	66%	66%	59%	56%

Comments: An easy-doing, moderate-framed cow who has produced 8 calves in 8 years including 4 sale bulls. Exceptional figures for an old cow with calving ease and low birth weight in the top 1% for the breed, and a huge EMA - the highest in the herd! Terrific potential here being mated AI to Taimate Lazarus, followed up by Turihaua Loyalty.

BREEDPLAN INDEXES

SR +\$107 **AP** +\$105

Purchaser:

PRICE: \$

Lot: 83 MEADOWSLEA E461

Birth Date: 20/10/09

ID No: 19134109461

ELLERTON LASER 011245
FLORIDALE YELET
FLORIDALE UMOYA

BON VIEW NEW DESIGN 1407 (IMP USA)
ELLERTON 98147

OHOKU OF FLORIDALE
MOYA OF FLORIDALE

MEADOWSLEA 159
MEADOWSLEA B697
MEADOWSLEA 933

TE MANIA UNLIMITED U3271 (IMP AUS)
MEADOWSLEA 410

GLEN R ABSOLUTE
MEADOWSLEA 337

2019 AUSTRALASIAN GROUP BREEDPLAN EBVS

DIR	DTRS	GL	BW	200	400	600	MCW	Milk
-2.9	-0.6	-2.0	+4.5	+21	+42	+49	+44	+13
56%	44%	51%	83%	78%	78%	81%	82%	79%

SS	DTC	CW	EMA	Rib Fat	Rump	RBV (%)	IMF%
+2.0	-8.3	+15	+2.4	+3.0	+3.4	+0.0	-0.4
69%	63%	68%	64%	70%	68%	64%	63%

Comments: Another of these good breeding Yelet cows. 3 good sale bulls, 3 daughters retained and 1 daughter in this sale at lot 39. Great fertility traits once again with DTC and rib and rump fats in the top 5% for the breed. These Yelet daughters are all moderate - framed, easy - doing types we really rate. Mated to shared retained keeper M452 (son of the \$100,000 Rangatira 13-28), followed up by L226.

BREEDPLAN INDEXES

SR +\$76 **AP** +\$66

Purchaser:

PRICE: \$

Lot: 84 MEADOWSLEA E292

Birth Date: 15/09/09

ID No: 19134109292

HIGHLANDER OF STERN
MEADOWSLEA C872
MEADOWSLEA 43

TE MANIA UNLIMITED U3271 (IMP AUS)
STERN 2664

KOROMIKO INTENT U3
MEADOWSLEA 504

MEADOWSLEA A324
MEADOWSLEA C1000
MEADOWSLEA A364

WOODBANK BLACKPOWER 06
MEADOWSLEA 68

MEADOWSLEA 108
MEADOWSLEA 124

2019 AUSTRALASIAN GROUP BREEDPLAN EBVS

DIR	DTRS	GL	BW	200	400	600	MCW	Milk
+0.5	-1.2	-1.5	+3.0	+25	+48	+54	+45	+10
52%	40%	53%	80%	75%	74%	76%	77%	73%

SS	DTC	CW	EMA	Rib Fat	Rump	RBV (%)	IMF%
+1.2	-2.2	+25	+3.7	+0.2	+1.0	+0.4	+0.7
67%	55%	64%	58%	64%	63%	58%	57%

Comments: A good, moderate, easy-doing cow here going back to Highlander of Stern. 8 calves in 8 years including 2 good sale bulls and 2 daughters retained. Very good mate here to our 2018 keeper sire Meadowslea M564 with follow-up from L226.

BREEDPLAN INDEXES

SR +\$82 **AP** +\$81

Purchaser:

PRICE: \$



ANNUAL DRAFT STUD COWS

Lot: 85 MEADOWSLEA B697

Birth Date: 23/09/06

ID No: 19134106697

TE MANIA UNLIMITED U3271 (IMP AUS) B/R NEW DESIGN 036
TE MANIA LOWAN R426

MEADOWSLEA 159
MEADOWSLEA 410

GLEN R ABSOLUTE GRUBBS MAC KENZIE (IMP USA)
KAHARAU G3834

MEADOWSLEA 933
MEADOWSLEA 337

MERCHISTON KINGSMAN 329
TURIHAUA 2480

2019 AUSTRALASIAN GROUP BREEDPLAN EBVS

DIR	DTRS	GL	BW	200	400	600	MCW	Milk
-1.2	-0.8	-1.7	+3.1	+14	+34	+37	+34	+11
60%	49%	58%	84%	80%	80%	82%	82%	83%

SS	DTC	CW	EMA	Rib Fat	Rump	RBV (%)	IMF%
+2.4	-4.8	+8	+1.6	+2.1	+2.6	+0.0	+0.2
72%	66%	70%	62%	66%	64%	61%	61%

Comments: A daughter of Meadowslea 159 who left exceptional maternal and fertility traits in his daughters. B697 has bred well with 12 good calves in 11 years including good sons to Glentanner Station and Glenquoich Station, as well as 3 Daughters retained. She has a top son in this year's sale mob N226 who is a real prospect too. Great fertility figures again with good scrotal size, and rib and rump all in the top 5% for the breed. Exciting mate here to F540 followed by his two top yearling sons N270 and N214.

BREEDPLAN INDEXES

SR	+\$61	AP	+\$56
----	-------	----	-------

Purchaser:

PRICE: \$

Lot: 86 MEADOWSLEA B679

Birth Date: 20/09/06

ID No: 19134106679

TE MANIA UNLIMITED U3271 (IMP AUS) B/R NEW DESIGN 036
TE MANIA LOWAN R426

MEADOWSLEA 159
MEADOWSLEA 410

GLEN R ABSOLUTE GRUBBS MAC KENZIE (IMP USA)
KAHARAU G3834

MEADOWSLEA 99
532 OF LAIRDVALE

KAHARAU YANKEE 205
235 OF LAIRDVALE

2019 AUSTRALASIAN GROUP BREEDPLAN EBVS

DIR	DTRS	GL	BW	200	400	600	MCW	Milk
-3.4	-4.9	-1.1	+6.4	+28	+55	+76	+87	+11
60%	49%	59%	84%	79%	80%	82%	81%	79%

SS	DTC	CW	EMA	Rib Fat	Rump	RBV (%)	IMF%
+1.0	-4.6	+24	-0.1	+1.1	+1.5	+0.1	+0.1
75%	63%	69%	65%	67%	67%	62%	61%

Comments: Another top-quality 159 daughter who is breeding well with 12 calves in 11 years. She has produced 4 good sale bulls, to Guide Hill Station \$9,500, Annandale Station \$6,000, Grays Hills Station \$6,000 and Glenquoich Station. She has twin sons in this year's sale bull mob - one who we have used as a yearling over the stud heifers (N362) as well as 3 daughters retained, and a granddaughter for sale in this catalogue at lot 15. Good mate here to K703, followed up by two of his sons.

BREEDPLAN INDEXES

SR	+\$64	AP	+\$79
----	-------	----	-------

Purchaser:

PRICE: \$

Lot: 87 MEADOWSLEA D168

Birth Date: 28/09/08

ID No: 19134108168

TE MANIA XCELL 96263 TE MANIA KELP (IMP AUS)
41 94 OF TE MANIA

FARFIELD AVORIO 316
UNITY 850 OF GLENMARK

WARRIOR OF TE MANIA
NICELY OF GLENMARK

STERN 68 STERN 512
STERN 999235

MEADOWSLEA 163
MEADOWSLEA 80

MEADOWSLEA 824
MEADOWSLEA 802

2019 AUSTRALASIAN GROUP BREEDPLAN EBVS

DIR	DTRS	GL	BW	200	400	600	MCW	Milk
+0.3	-3.8	-1.5	+6.1	+37	+66	+90	+90	+11
57%	46%	56%	83%	78%	78%	81%	82%	79%

SS	DTC	CW	EMA	Rib Fat	Rump	RBV (%)	IMF%
+1.1	-2.7	+38	+1.2	-0.3	+0.6	-0.2	+0.0
66%	64%	68%	66%	72%	70%	65%	65%

Comments: A well-balanced, quality cow who has produced 8 in 8 including only 1 bull calf who was sold to Chris Hampton for \$7500. 2 daughters were retained and she has just weaned a top calf again this year. Mated to the top Crump yearling N166 followed by K811.

BREEDPLAN INDEXES

SR	+\$83	AP	+\$98
----	-------	----	-------

Purchaser:

PRICE: \$



ANNUAL DRAFT STUD COWS

Lot: 88 MEADOWSLEA D258

Birth Date: 28/10/08

ID No: 19134108258

└ STERN EXACT 185 (ET) ┐ HINGAIA 469
└ X733 OF KENHARDT ┐ STERN 948
ACHIEVER A320 OF KENHARDT
└ MATAURI STOCKMAN 526
└ GODDESS OF KENHARDT

└ RANUI W RADIATA 820 ┐ PINE DRIVE BIG SKY (9894245)
MEADOWSLEA 9 ┐ RANUI W 411
└ MEADOWSLEA 651 ┐ MEADOWSLEA 440
└ MEADOWSLEA T118

2019 AUSTRALASIAN GROUP BREEDPLAN EBVS

DIR	DTRS	GL	BW	200	400	600	MCW	Milk
-2.6	-3.3	+1.5	+6.3	+42	+74	+109	+126	+16
59%	49%	67%	83%	79%	79%	81%	82%	82%

SS	DTC	CW	EMA	Rib Fat	Rump	RBV (%)	IMF%
+2.1	-4.2	+50	+1.9	+1.4	+1.3	-0.8	+0.3
71%	65%	69%	67%	72%	71%	66%	66%

Comments: A well-bred cow here by Achiever of Kenhardt and back to Ranui Radiata. She has bred 1 good sale bull and 3 daughters who have been retained and are all breeding very well. Exceptional growth figures for an old cow with those very strong rib and rump figures once again. Lots of depth and thickness here and should be a great mate to K703, followed up by two of his sons.

BREEDPLAN INDEXES

SR	+\$82	AP	+\$111
----	-------	----	--------

Purchaser:

PRICE: \$

Lot: 89 MEADOWSLEA E456

Birth Date: 17/10/09

ID No: 19134109456

└ FARFIELD AVORIO 316 ┐ TE MANIA XCELL 96263
MEADOWSLEA C885 ┐ UNITY 850 OF GLENMARK
└ MEADOWSLEA 119 ┐ WOODBANK PP85
└ PARAKOWHAI 593

└ MEADOWSLEA 36 ┐ TOTARANUI STEPTOE 3.40
MEADOWSLEA B628 ┐ MEADOWSLEA 405
└ MEADOWSLEA 267 ┐ MEADOWSLEA 144
└ MEADOWSLEA 174

2019 AUSTRALASIAN GROUP BREEDPLAN EBVS

DIR	DTRS	GL	BW	200	400	600	MCW	Milk
-0.4	-1.8	-1.6	+5.5	+36	+67	+91	+90	+10
51%	37%	46%	81%	76%	77%	79%	79%	74%

SS	DTC	CW	EMA	Rib Fat	Rump	RBV (%)	IMF%
+1.1	-2.5	+39	+2.8	+0.9	+0.8	-0.2	+0.0
67%	56%	65%	62%	68%	66%	60%	59%

Comments: A good, strong, breeding cow here who has produced a stud bull at \$9500, another good bull sold to Ardmore, 2 daughters retained and another in this sale at lot 60. She always gives us a top calf and has just weaned the heaviest calf of her lifetime and the heaviest of all the sale cows. Strong growth figures with good rib and rump fats. Great mate here to Meadowslea F540, followed up by those two great sons of his N270 and N214.

BREEDPLAN INDEXES

SR	+\$88	AP	+\$105
----	-------	----	--------

Purchaser:

PRICE: \$

Lot: 90 MEADOWSLEA E466

Birth Date: 20/10/09

ID No: 19134109466

└ MEADOWSLEA 123 ┐ TE MANIA UNLIMITED U3271 (IMP AUS)
MEADOWSLEA B571 ┐ MEADOWSLEA 989
└ MEADOWSLEA 131 ┐ RANUI W RADIATA 820
└ MEADOWSLEA 874

└ KOROMIKO INTENT U3 ┐ WAITAPU INTENSITY 46
MEADOWSLEA 159 ┐ KAHIKA L453
└ MEADOWSLEA 933 ┐ GLEN R ABSOLUTE
└ MEADOWSLEA 337

2019 AUSTRALASIAN GROUP BREEDPLAN EBVS

DIR	DTRS	GL	BW	200	400	600	MCW	Milk
-7.9	-7.7	-1.3	+7.7	+33	+60	+86	+94	+7
54%	41%	50%	81%	76%	77%	79%	79%	73%

SS	DTC	CW	EMA	Rib Fat	Rump	RBV (%)	IMF%
+0.9	-0.7	+31	+1.8	-1.4	-0.7	+1.3	-0.4
68%	61%	66%	63%	69%	67%	62%	61%

Comments: Good strong performance from this old cow, with a thumping calf just weaned again this year. 8 calves in 8 years from this moderate-framed, well-balanced type. Mated to K703 followed up by his two yearling sons.

BREEDPLAN INDEXES

SR	+\$45	AP	+\$63
----	-------	----	-------

Purchaser:

PRICE: \$



ANNUAL DRAFT STUD COWS

Lot: 91 MEADOWSLEA D186

Birth Date: 01/10/08

ID No: 19134108186

TE MANIA UNLIMITED U3271 (IMP AUS)
MEADOWSLEA 159
 MEADOWSLEA 410

B/R NEW DESIGN 036
 TE MANIA LOWAN R426

BRACKENFIELD PRINCE ABEL
 MEADOWSLEA 117

MERCHISTON PLAYMATE 733 AB
MEADOWSLEA 9117
 MEADOWSLEA 405

RITO 1B2 OF RITA 5H11 BANDO (IMP USA)
 MERCHISTON FROMME 739

BRACKENFIELD PRINCE ABEL
 MEADOWSLEA 103

2019 AUSTRALASIAN GROUP BREEDPLAN EBVS

DIR	DTRS	GL	BW	200	400	600	MCW	Milk
+2.6	+1.8	-4.1	+1.0	+19	+41	+46	+46	+16
59%	48%	66%	83%	78%	78%	82%	81%	77%

SS	DTC	CW	EMA	Rib Fat	Rump	RBV (%)	IMF%
+3.9	-7.7	+15	+2.1	+3.9	+4.7	-1.0	+1.0
72%	63%	69%	66%	71%	69%	65%	64%

Comments: A good old cow by the great cow-breeder Meadowslea 159. D0186 has produced 4 sale bulls plus a good daughter in this sale (lot 8) and 1 daughter retained. Tremendous fertility figures here with days to calving, scrotal size and rib and rump fat all in the top 5% for the breed. Should be a top mate to the very good Crump yearling N166, followed up by K811.

BREEDPLAN INDEXES

SR +\$95 **AP** +\$92

Purchaser:

PRICE: \$

Lot: 92 MEADOWSLEA E426

Birth Date: 10/10/09

ID No: 19134109426

RANGATIRA 850
PIKO BURN CHAR 26-06
 PIKO BURN 4-03

RANGATIRA ZODIAC 619
 RANGATIRA 96

848 OF TURIROA
 PIKO BURN 3/97

MEADOWSLEA 159
MEADOWSLEA B716
 MEADOWSLEA 72

TE MANIA UNLIMITED U3271 (IMP AUS)
 MEADOWSLEA 410

TOTARANUI STEPTOE 3.40
 MEADOWSLEA 626

2019 AUSTRALASIAN GROUP BREEDPLAN EBVS

DIR	DTRS	GL	BW	200	400	600	MCW	Milk
-2.1	+0.0	-2.8	+4.2	+29	+52	+71	+55	+14
56%	42%	50%	83%	79%	79%	81%	80%	78%

SS	DTC	CW	EMA	Rib Fat	Rump	RBV (%)	IMF%
+2.7	-3.2	+24	+2.3	+1.4	+1.7	+0.5	-0.1
73%	61%	68%	67%	71%	70%	65%	65%

Comments: A clean cut Piko Burn Char daughter who has had sons sold at \$8500 to Annandale Station and Horwell Downs, as well as 2 daughters retained. Strong scrotal and fat figures once again. Mated by AI to L106 - a top bull sold two years ago to Peak Hill Station. AI was followed up by Turihaua Loyalty.

BREEDPLAN INDEXES

SR +\$78 **AP** +\$85

Purchaser:

PRICE: \$

Lot: 93 MEADOWSLEA C983

Birth Date: 01/10/07

ID No: 19134107983

TE WHANGA TRAILBLAZER T47
MEADOWSLEA 70
 MEADOWSLEA 410

FOSSIL CREEK SHADOW
 TE WHANGA ER K132

BRACKENFIELD PRINCE ABEL
 MEADOWSLEA 117

GLEN R ABSOLUTE
MEADOWSLEA 39
 MEADOWSLEA 420

GRUBBS MAC KENZIE (IMP USA)
 KAHARAU G3834

BRACKENFIELD PRINCE ABEL
 MEADOWSLEA 004

2019 AUSTRALASIAN GROUP BREEDPLAN EBVS

DIR	DTRS	GL	BW	200	400	600	MCW	Milk
-1.3	-3.9	-2.5	+6.3	+25	+47	+60	+70	+9
58%	47%	51%	83%	79%	79%	81%	82%	80%

SS	DTC	CW	EMA	Rib Fat	Rump	RBV (%)	IMF%
+1.1	+1.6	+19	+1.2	+0.3	+1.0	+0.4	+0.0
72%	64%	69%	65%	70%	69%	64%	63%

Comments: A real gutsy old cow by the great old sire Meadowslea 70. 10 calves in 10 years including 2 sale bulls and a very good prospect for this years bull sale, plus 2 daughters retained. She always weans top calves and this year's is her heaviest ever. Great mate to F540, followed up by his two top sons N270 and N214.

BREEDPLAN INDEXES

SR +\$46 **AP** +\$53

Purchaser:

PRICE: \$



LOOKING FOR PROVEN HILL COUNTRY ANGUS?

Buy from the specialists!

MEADOWSLEA ANGUS

The Meadowslea hill-country type

Visual appraisal is still very important for selecting cattle to perform in hill - country

MASCULINE TRAITS - A strong head and jaw and thick neck indicate high levels of libido, testosterone and reproduction efficiency

NECK LENGTH - A thicker necked animal matures and reaches puberty earlier and has more libido

A longer neck indicates a higher maintenance animal that is slower to reach puberty and re-breed

HEART GIRTH - Large heart girth is an indicator of vigor and easy keeping ability

Small heart girth animals are more susceptible to stress, are higher maintenance and do not perform well on tussock

RIB FAT - Strong rib fat covers are the essential energy store for adverse conditions.

They indicate easy-doing and finishing ability and are directly related to increased fertility in both heifers and cows.

STRUCTURAL SOUNDNESS, FEET AND BONE - High country cattle cover large distances over rugged terrain so a strong skeleton is essential

HIDE - a good thick skin and coat is essential in the cold harsh environment

FLANK - Deep flanked animals are easier keeping, have more meat in the rump and have more maternal and reproductive efficiency

Higher flanked animals tend to be flighty, are higher maintenance and take longer to finish on grass

SCROTAL SIZE - Larger scrotal size at 12 months indicates daughters will reach puberty earlier, be more fertile, and re-breed early every year.



DAVID GIDDINGS

70 HILL-COUNTRY BULLS SELL
Friday June 21, 2019
on farm - Fairlie



Our 2 proven senior sires, now aged 9 and 10, exhibit all the soundness and longevity so important in hill - country cattle. Both are trait leaders for 'Days to Calving' - the key indicator of fertility in hill country.



MEADOWSLEA F540 - Deep, thick, easy-doing sire with exceptional production figures for hill country. He ranks in the top 10% of the breed for the important maternal and fertility traits of 'low birth weight', 'short gestation', 'scrotal size' and 'rib' and 'rump fat'. He is also a trait leader for 'milk', 'calving ease' and 'days to calving' figures!



TURIHAUA CRUMP E5 Traditional NZ Angus hill country type. He has sired over 350 outstanding progeny which are always highly sought after. His daughters are proving exceptionally fertile and productive in our hill country, resulting in him now being a trait leader for 'days to calving'.

Meadowslea Angus
Ph 03 685 8027
giddingsfamily@xtra.co.nz
www.meadowslea.co.nz

- 400 stud cows run on tussock under commercial conditions
- Easy doing cattle with exceptional fat covers and quiet temperament
- Strong NZ bloodlines with proven maternal traits

3rd ANNUAL IN-CALF PRODUCTION SALE

1st MAY 2019

80 Stud R2, R3, R4, and
Annual Draft Capital Stock Cows

Approx. 70 Commercial R2
Heifers
(Meadowslea bred)



RISING 2YR MEADOWSLEA BRED COMMERCIAL HEIFERS

We were thrilled to be able to purchase top-quality lines of heifer calves from long-term High Country clients at the 2018 Mackenzie Basin calf sale in Temuka. These have been wintered under the Meadowslea system and mated to stud low-birthweight Meadowslea yearling bulls. Out of the entire group all but three were in calf after 2 ½ cycles. We have selected 4 lines we believe will go on to be top-quality breeding cows and have these offered for sale. They represent a rare opportunity to purchase genuine High Country Angus genetics.

LOT 94 – approx. 12 Commercial R2 heifers – ex Grays Hills Station



Grays Hills Station is in the heart of the harsh Mackenzie Basin. Angus cows have run at Grays Hills for many decades, and the runholders – the Urquart family – have been using Meadowslea bulls for over 25 years. Grays Hills run 300 Angus cows and 50 replacements, together with a large Merino operation – 6200 ewes, 4500 wethers and 2000 hoggets, across an expanse of 21,700 Ha of the semi-arid Mackenzie basin. Summers can be blisteringly hot and dry, with winters equally harsh, and the Angus cows spend a large part of the year subsisting on their fat reserves. Annual rainfall never exceeds 400mm.

Purchaser:	PRICE: \$
------------	-----------

LOT 95 – approx. 18 commercial R2 heifers - ex Braemar Station



Braemar Station lies on the eastern shore of Lake Pukaki, near Mt Cook in the Mackenzie country. This is a harsh, high-altitude alpine environment where the growing season is short and hard winters with heavy snowfalls are common. Hamish and Julia Mackenzie run 300 Angus cows and 60 replacement heifers, alongside 5000 Perendale ewes and a deer unit. Hamish's father Duncan began buying Meadowslea bulls in the early days of the stud before we even sold at auction.

Purchaser:	PRICE: \$
------------	-----------



LOT 96 – approx. 18 commercial R2 heifers – ex Braemar Station



Purchaser:	PRICE: \$
------------	-----------

LOT 97 – approx. 22 commercial R2 heifers – ex Horwell Downs



Horwell Downs is located close to our Berridale hill block, between Kimbell and Burke's Pass. It covers 2400 Ha, running up to the summit of the Two Thumb Range at 5,000 ft near the Mt Dobson skifield – in fact the skifield access road goes through the bull paddock. The 260 predominantly Angus cows are expected to thrive on this country year-round, together with 50 replacement heifers and 3250 composite ewes. Andrew (Buster) Hurst actually used to work for us at Meadowslea, and his family have been buying Meadowslea bulls for a long time.

Purchaser:	PRICE: \$
------------	-----------

WE'VE MADE BULLS MORE ATTRACTIVE.

**14 days
FREE
cover**

**6.5%
for 12
months**

The handsome beasts in this catalogue will look even more appealing on sale day, thanks to FMG – the country's leading rural insurer. With 14 days free Exclusive Bull Cover, they'll be automatically insured from the fall of the hammer, covering their transit and infertility. And you can keep that cover going for the remaining 12 months for just 6.5% of the purchase price, for bulls up to the value of \$50,000. So don't miss this chance to buy bulls covered by FMG. It's a mighty attractive offer.

Please note this is only a summary of FMG products and services and is subject to our specific product documentation. For full details, refer to the relevant policy wordings at fmg.co.nz

We're here for the good of the country.

FMG
Advice & Insurance

NOTES



Exclusive Bull Cover

What is Exclusive Bull cover?

FMG has partnered with Angus NZ to offer comprehensive insurance cover from the fall of the hammer with this vendor. All bulls auctioned at this exclusive Angus NZ and FMG sale up to the value of \$50,000 will automatically be covered under FMG's Exclusive Bull cover for 14 days at no cost to the purchaser.

Length of cover

To extend cover for the specified bull beyond 14 days you need to tick Exclusive Bull cover 12 months on the Purchaser Instruction and Insurance Slip in this catalogue. The specified bull is then covered for the remaining period of 12 months. The premium is payable to FMG and is in addition to the purchase price of the bull.

If you require an alternative cover period talk to an FMG representative.

Your bull's value

Any bull covered under this policy must be purchased for \$50,000 or less.

For any bull purchased over \$50,000 talk to an FMG representative.

During the period of insurance, the specified animal is covered for:

- Death or infertility as a result of accident, disease or illness.
- Transit.
- Theft.

What we will pay

Fair market value of your specified bull, less any amount you receive for the sale of the carcass, up to the amount shown on the insurance certificate.

Disclaimer

Please note this is only a summary of the product and is subject to our specific product documentation. For full details, you should refer to the policy document. You can get these documents, and any other information you need, from your FMG representative, by calling us or visiting our website.

📞 0800 366 466 💻 www.fmg.co.nz

02/19 INHD



Purchaser Instruction and Insurance Slip

This slip **MUST** be completed and handed to the Booking Clerk before leaving the sale.

Purchaser name:	NAIT No:
Relationship to purchaser (if purchasing on behalf of):	
Email:	
Postal address:	
Delivery address:	
Telephone:	Mobile:

Lot:	Tag:	\$	Breed: Angus	DOB:
Lot:	Tag:	\$	Breed: Angus	DOB:
Lot:	Tag:	\$	Breed: Angus	DOB:
Lot:	Tag:	\$	Breed: Angus	DOB:
Lot:	Tag:	\$	Breed: Angus	DOB:
Lot:	Tag:	\$	Breed: Angus	DOB:
Lot:	Tag:	\$	Breed: Angus	DOB:
Lot:	Tag:	\$	Breed: Angus	DOB:
Lot:	Tag:	\$	Breed: Angus	DOB:
Lot:	Tag:	\$	Breed: Angus	DOB:
Lot:	Tag:	\$	Breed: Angus	DOB:
Lot:	Tag:	\$	Breed: Angus	DOB:

Company to be debited:
Transport instructions:

FMG Insurance Cover:
<input checked="" type="checkbox"/> 14 days - FMG Exclusive Bull cover (at no charge) <input type="checkbox"/> Extend cover to 12 months - FMG Exclusive Bull cover

FMG and Angus New Zealand have partnered to offer comprehensive cover for bulls. If you would not like your information shared between the two of us, tick this box: <input type="checkbox"/>
--

NO VERBAL INSTRUCTIONS WILL BE ACCEPTED	Signature of Purchaser or Agent	Date / /
---	---------------------------------	------------------

FMG OFFICE USE ONLY	
Name of sale:	Date of sale: / /
FMG employee:	

INDEX

R2 Stud Heifers	
No	Lot No
101	8
102	6
116	21
128	33
133	34
136	12
137	5
154	11
162	30
202	7
229	15
231	10
244	39
246	20
272	24
285	1
296	9
300	4
311	16
318	14
319	32
328	38
348	13
370	29
412	27
418	3
421	31
432	2
442	35
444	28
450	19
457	22
461	36
462	26
464	37
466	17
472	23
481	40
496	25
498	18

R3 Stud Heifers	
408	46
411	54
426	49
456	59
458	57
476	41
492	56
503	42
546	53
563	55
602	43
1012	52
1037	60
1038	44
1042	48
1059	47
1060	58
1065	45
1080	51
1092	50

R4 Stud Heifers	
051	64
081	65
101	66
107	72
127	61
132	74
133	62
142	68
152	73
212	70
216	76
224	71
235	67
276	75
310	63
360	69

Annual Draft	
101	81
168	87
186	91
258	88
292	84
310	82
350	77
391	79
420	78
426	92
456	89
461	83
466	90
495	80
679	86
697	85
983	93



PROVEN TO PERFORM IN A TOUGH TESTING GROUND



Meadowslea stud cows live in a different world to most Angus Stud cows in NZ, and have naturally developed into a type that thrives in their environment. Moderate framed cows that have deep wide bodies and carry good fat covers are proven to be the most productive in this country. The use of strong NZ bloodlines ensures this suitability for the environment will continue.

Widespread use of imported bulls from different environments, or genetics sourced from grain fed systems, have no place in the Meadowslea breeding programme.

It is no surprise then that Meadowslea bulls shift and perform for clients in hill country throughout NZ.

PROVEN WHERE IT COUNTS!



The Mackenzie Basin Calf Sale in Temuka is the largest sale of Angus and Angus-Cross calves in the South Island.

It is the best day of the year for Meadowslea Angus – watching our clients' calves come through the ring. This year there were almost 1150 calves from our clients' properties and they were in strong demand, making a significant premium compared with other

sales, with a number of pens making up to \$4/kg. A big congratulations to all our clients for a marvellous line of Angus and Angus-cross calves, all displaying those easy-doing and fleshy attributes that our genetics are noted for.

Top price on the day was \$1100/head to long-standing Meadowslea client Grampians Station for a pen of Angus x Hereford cross steers.

LISTEN TO THE BREEDERS OF SOME OF THE COMMERCIAL R2YR HEIFERS IN THE CATALOGUE

– on the DVD available on our website



Mark Urquart
Grays Hills Station



Hamish Mackenzie
Braemar Station



Guy King
Manager Grampians Stn

Our 2 proven senior sires, now aged 9 and 10, exhibit all the soundness and longevity so important in hill– country cattle.

Both are trait leaders for ‘Days to Calving’

- the key indicator of fertility in hill country. They both have daughters and are used as mating sires in this catalogue.



MEADOWSLEA F540 – Deep, thick, easy-doing sire with exceptional production figures for hill country. He ranks in the top 10% of the breed for the important maternal and fertility traits of ‘low birth weight’, ‘short gestation’, ‘scrotal size’ and ‘rib’ and ‘rump fat’. He is also a trait leader for ‘milk’, ‘calving ease’ and ‘days to calving’ figures!



TURHAUA CRUMP E5 – Traditional NZ Angus hill country type. He has sired over 300 outstanding progeny which are always highly sought after. His daughters are proving exceptionally fertile and productive in our hill country, resulting in him now being a trait leader for ‘days to calving’ at -9.6.